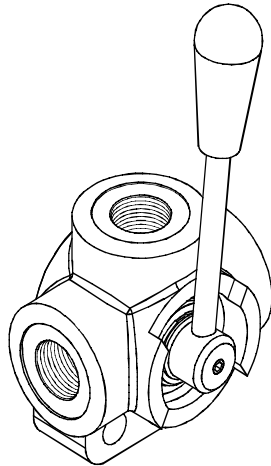
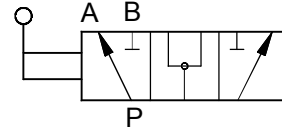


◆ **MODEL 型式**
HV



◆ **CONTROL PORT(S) 動作形式**



◆ **SPECIFICATIONS 規格**

| Model Number 型式號碼 | Operating Pressure 操作壓力 bar | Flow 流量 lpm | Weight 重量 Kg |
|--------------------------------------|--------------------------------|------------------------------|-----------------|
| HV-380 | 300 (4351 psi) | 50 (13.20 gpm) | 1.4(3.09 lbs) |
| HV-120 | 250 (3626 psi) | 80 (21.13 gpm) | |
| HV-340 | 220 (3190 psi) | 120 (31.70 gpm) | 1.8(3.97 lbs) |
| HV-100 | 220 (3190 psi) | 180 (47.55 gpm) | |
| Fluid Type 流體型式 | | ISO VG 32, 46, 68 | |
| Viscosity 黏性 cSt | | 10~400 (59~1854 SSU) | |
| Operating Temperature 操作溫度 °C | | -30~100 (-22~212°F) | |
| Contamination Level 污染標準 | | ISO4406. 21/19/16 NAS1638,10 | |

◆ **HOW TO ORDER 編號說明**

| | |
|----------|----------|
| 1 | 2 |
| HV | 380 |

1 VALVE SERIES 系列名稱

HV = Manually Operated Directional Valves
手動換向閥

2 SUBPLATE MOUNTING SIZE 稱呼口徑

380 : G 3/8 340 : G 3/4
120 : G 1/2 100 : G 1

◆ **DIMENSIONS 外型尺寸圖**

| Model Size 型式 尺寸 | HV-380 | HV-120 | HV-340 | HV-100 |
|------------------------|---------------|--------|---------------|--------|
| A | 24 (0.95") | | 26.5 (1.04") | |
| B | 64.5 (2.54") | | 68.1 (2.68") | |
| C | 173.4 (6.83") | | 180.7 (7.11") | |
| D | 85 (3.35") | | 99.4 (3.91") | |
| E | 36 (1.42") | | 42 (1.65") | |
| F | 37.5 (1.47") | | 44.6 (1.77") | |
| G | 75 (2.95") | | 90 (3.54") | |
| H | G3/8 | G1/2 | G3/4 | G1 |

