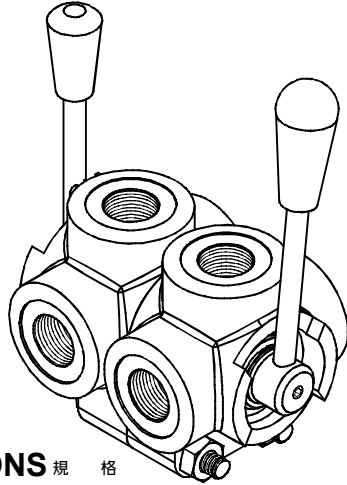


PRESSURE CONTROL VALVES 壓力控制閥

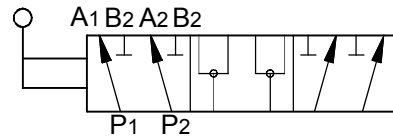
HWV SERIES MANUALLY OPERATED DIRECTIONAL VALVES

HWV 系列手動換向閥

◆ MODEL 型式 HWV



◆ CONTROL PORT(S) 動作形式



◆ SPECIFICATIONS 規格

Model Number 型式號碼	Operating Pressure 操作壓力 bar	Flow 流量 lpm	Weight 重量 Kg
HVW-380	315 (4569 psi)	50 (13.20 gpm)	2.8(6.3 lbs)
HVW-120	280 (4061 psi)	80 (21.13 gpm)	
HVW-340	220 (3190 psi)	120 (31.70 gpm)	3.6(8 lbs)
HVW-100	220 (3190 psi)	180 (47.55 gpm)	
Fluid Type 流體型式		ISO VG 32 , 46 , 68	
Viscosity 黏性 cSt		10~400 (59~1854 SSU)	
Operating Temperature 操作溫度 °C		-30~100 (-22~212°F)	
Contamination Level 污染標準		ISO4406. 21/19/16 NAS1638,10	

◆ HOW TO ORDER 編號說明

1	2
HWV	380

1 VALVE SERIES 系列名稱

HWV = Manually Operated Directional Valves
手動換向閥

2 SUBPLATE MOUNTING SIZE 稱呼口徑

380 : G 3/8 340 : G 3/4
120 : G 1/2 100 : G 1

◆ DIMENSIONS 外型尺寸圖

Model Size 型式尺寸	HVW-380	HVW-120	HVW-340	HVW-100
A	24 (0.95")		26.5 (1.04")	
B	128.9 (5.08")		136.3 (5.37")	
C	173.4 (6.83")		180.7 (7.11")	
D	85 (3.35")		99.4 (3.91")	
E	36 (1.42")		42 (1.65")	
F	37.5 (1.47")		44.6 (1.76")	
G	75 (2.95")		90 (3.54")	
H	M8		M10	
I	G3/8	G1/2	G3/4	G1

