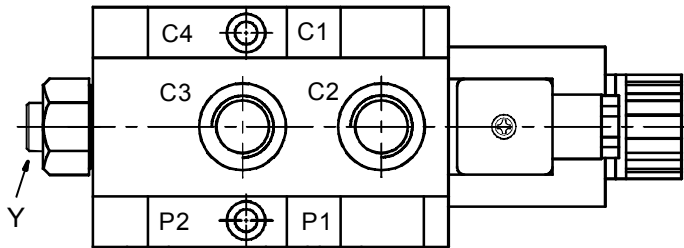
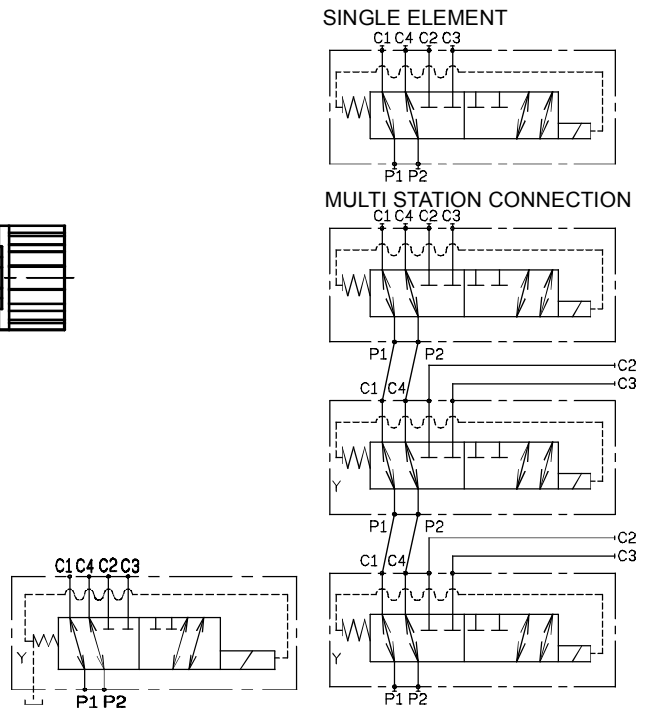


◆ MODEL 型 式

XEF-02T/03T/04T



- XEF-02T/03T/04T valves are special solenoid valves which allow the simultaneous connection of two pressure systems.
- XEF-02T/03T/04T 屬於特殊電磁閥，能夠同時連接至2個壓力系統。



◆ SPECIFICATIONS 規 格

Model Number 型式號碼	Maximum Pressure 最大壓力 bar	Maximum Flow 最大流量 lpm	Weight 重量 Kg
XEF-02T	250 (3625 psi)	20 (5.28gpm)	*
XEF-03T	250 (3625 psi)	40 (10.6gpm)	*
XEF-04T	250 (3625 psi)	80 (21.1gpm)	*
Fluid Type 流體型式		ISO VG 32, 46, 68	
Viscosity 黏性 cSt		10~400 (59~1854 SSU)	
Operating Temperature 操作溫度 °C		-30~100 (-22~212°F)	
Contamination Level 污染標準		ISO4406. 21/19/16 NAS1638,10	

Y: Maximum Pressure up to 320bar
Y: 最大壓力可達 320bar

◆ HOW TO ORDER 編號說明

1	2	3	4	5
XEF	03	T	D2	1N

1 VALVE SERIES 系列名稱
XEF = 6 way 2 positions Solenoid Operated Directional Valves 6孔2位電磁換向閥

2 SUBPLATE MOUNTING SIZE 稱呼口徑
02=G 1/4" 03 = G3/8"
04=G 1/2"

3 MODEL 型式
T: Threading Type (螺紋連接)

4 TYPE OF COIL 電磁閥電磁線圈類型
D1 : DC12 R1 : RF110 60HZ/50HZ
D2 : DC24 R2 : RF220 60HZ/50HZ

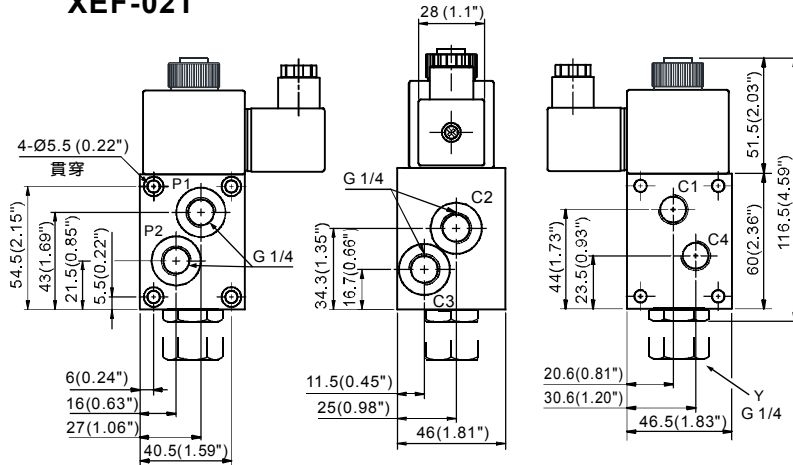
5 NUMBER OF VALVE BLOCKS 連數
1N~7N = 1~7 Blocks

◆ ACCESSORIES 附屬配件

MODEL 型式	NUMBER OF VALVE BLOCKS 連數	SCREW 螺絲	Q'ty 數量
XEF-02	2N	M5x95L	4
	3N	M5x140L	4
	4N	M5x185L	4
	5N	M5x230L	4
	6N	M5x280L	4
XEF-03 XEF-04	2N	M8x155L	4
	3N	M8x225L	4
	4N	M8x295L	4
	5N 6N	M8x365L M8x435L	4 4

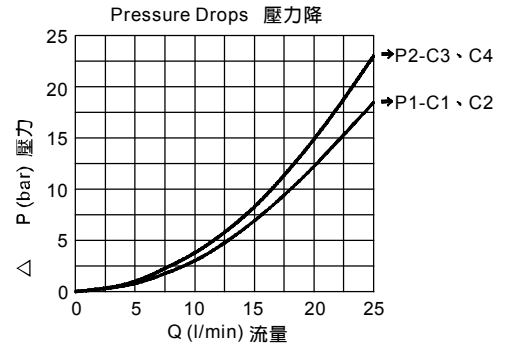
◆ DIMENSIONS 外型尺寸圖

XEF-02T



◆ PERFORMANCE 特性曲線

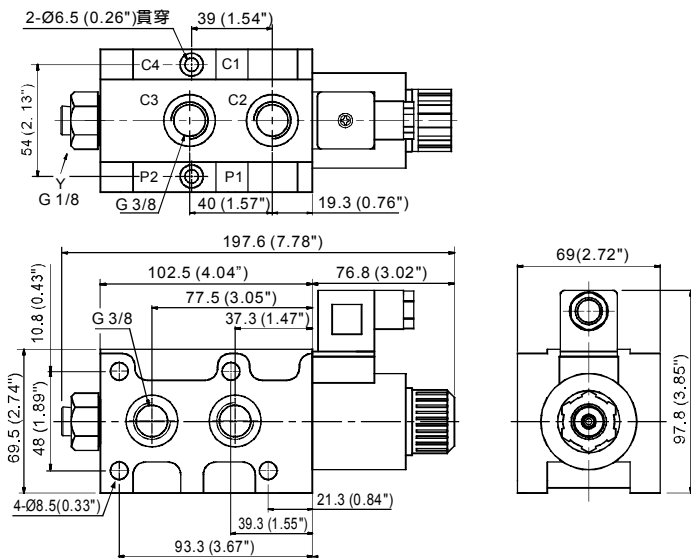
XEF-02T



- Internal Leakage: 15~20 cc/minute (0.5~0.7 cu. In./minute) max. At 100 bar (1450 psi). 內部泄漏: 在100 bar (1450 psi)時最大為15~20 毫升/分 (0.5~0.7 立方英寸/分).

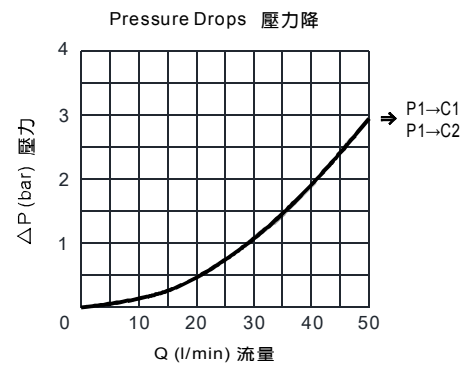
◆ DIMENSIONS 外型尺寸圖

XEF-03T



◆ PERFORMANCE 特性曲線

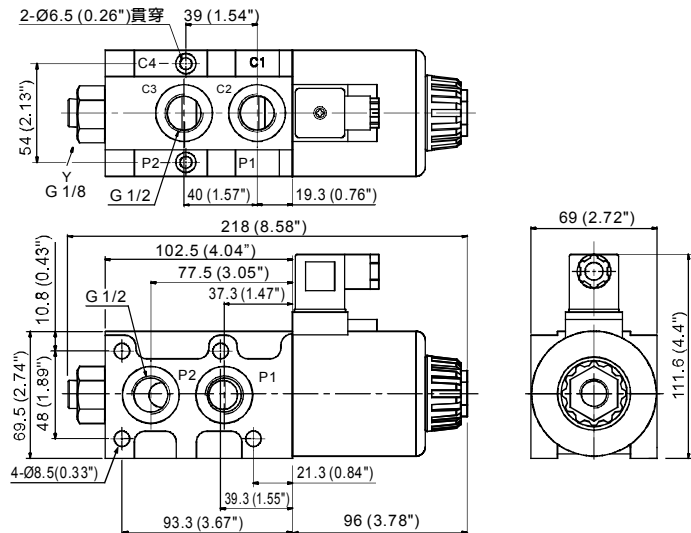
XEF-03T



- Internal Leakage: 25~30 cc/minute (0.9~1.1 cu. In./minute) max. At 100 bar (1450 psi). 內部泄漏: 在100 bar (1450 psi)時最大為25~30 毫升/分 (0.9~1.1 立方英寸/分).

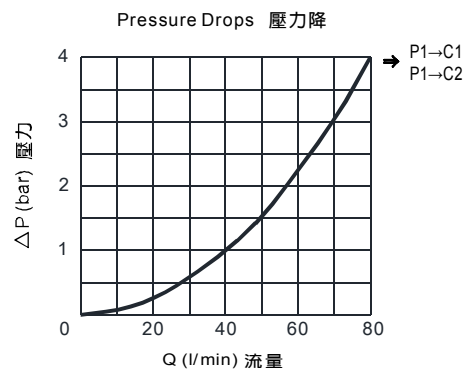
◆ DIMENSIONS 外型尺寸圖

XEF-04T



◆ PERFORMANCE 特性曲線

XEF-04T



- Internal Leakage: 25~30 cc/minute (0.9~1.1 cu. In./minute) max. At 100 bar (1450 psi). 內部泄漏: 在100 bar (1450 psi)時最大為25~30 毫升/分 (0.9~1.1 立方英寸/分).