

# DIRECTIONAL VALVES

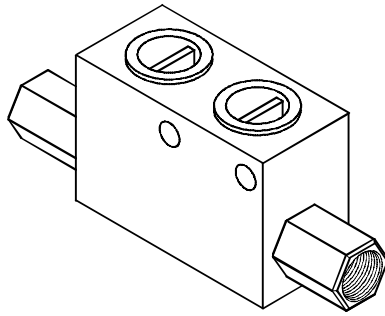
方向閥

## PCK SERIES CHECK, PILOT-TO-OPEN

PCK系列 引導式止逆閥

### MODEL 型式

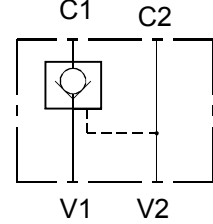
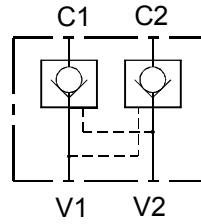
PCK



### CONTROL PORT(S) 動作形式

Standard  
標準型

Single Check  
單邊止逆



### SPECIFICATIONS 規格

Model Number 型式號碼	Operating Pressure 操作壓力 bar	Pilot Ratio 引導比例	Flow 流量 lpm	Weight 重量 Kg
PCK-02	320 (4641 psi)	4 : 1	15 (3.96 gpm)	0.65 (1.43 lbs)
PCK-03			35 (9.25 gpm)	0.65 (1.43 lbs)
PCK-04			50 (13.21 gpm)	1.40 (3.09 lbs)
Fluid Type 流體型式			ISO VG 32, 46, 68	
Viscosity 黏性 cSt			10~400 (59~1854 SSU)	
Operating Temperature 操作溫度 °C			-30~100 (-22~212°F)	
Contamination Level 污染標準			ISO4406. 21/19/16 NAS1638,10	

### HOW TO ORDER 編號說明

1	2	3
PCK	02	*

#### 2 PORT(S) 閥口

02 : G1/4"  
03 : G3/8"  
04 : G1/2"

#### 3 CHECK TYPE 止逆型式

Non : Standard 無記號:標準型

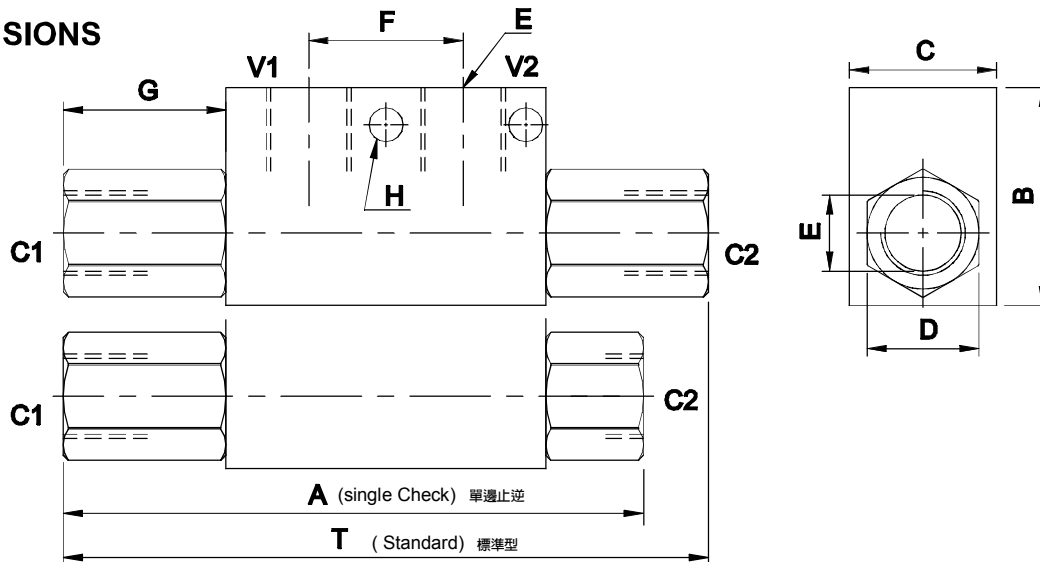
A : Single Check 單邊止逆

\*Please refer to the CONTRPL PORT(S) above.  
參考動作形式

#### 1 VALVE SERIES 系列名稱

PCK = Pilot Operated Check Valves  
引導式止逆閥

### DIMENSIONS 外型尺寸圖



Model 型式	A	B	C	D	E	F	G	H	T
PCK-02	111 (4.37")	43 (1.69")	29 (1.18")	22 (0.87")	G1/4"	30 (1.18")	28 (1.10")	∅5.5 (0.21")	120 (4.72")
PCK-03	117 (4.60")	43 (1.69")	29 (1.14")	22 (0.87")	G3/8"	30 (1.18")	32 (1.26")	∅5.5 (0.21")	128 (5.04")
PCK-04	154 (6.06")	60 (2.36")	40 (1.57")	32 (1.26")	G1/2"	41 (1.61")	42 (1.65")	∅8.5 (0.33")	174 (6.85")