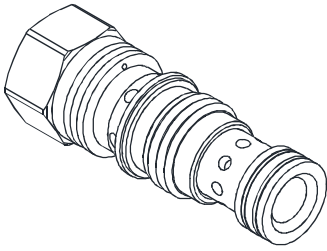


# PRESSURE CONTROL VALVES 壓力控制閥

## VRBP SERIES CARTRIDGE REDUCING / RELIEVING VALVES (PILOT CONTROL VALVES) VRBP系列插入式減泄壓閥(導壓級)

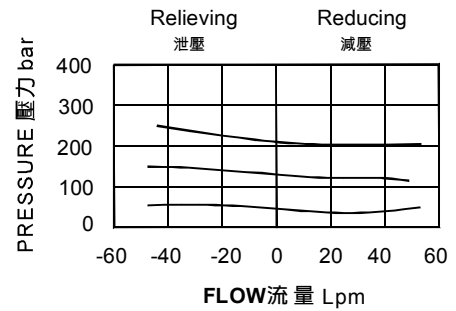
### ◆ MODEL 型 式 VRBP-02



### ◆ DESCRIPTION 說明

The-8 control option allows a pilot control valve to be incorporated directly into the end of the modulating element via the T-8A cavity. These pilot control cartridges are sold separately and include electro-proportional, solenoid, air pilot, and hydraulic pilot operation.  
T-8A控制是用導壓級控制閥直接插在減壓閥六角頭上的T-8A插孔中,導壓級控制閥需單獨訂購包括比例閥、電磁閥、氣導和液導。

### ◆ PERFORMANCE 特性曲線



### ◆ SPECIFICATIONS 規 格

Model Number 型式號碼	Operating Pressure 操作壓力 bar	Flow 流量 lpm	Weight 重量 Kg
VRBP-02	350 (5076 psi)	40 (10.57 gpm)	0.15 (0.33 lbs)
Fluid Type 流體型式		ISO VG 32, 46, 68	
Viscosity 黏性 cSt		10~400 (59~1854 SSU)	
Operating Temperature 操作溫度 °C		-30~100 (-22~212°F)	
Contamination Level 污染標準		ISO4406. 21/19/16 NAS1638,10	

### ◆ HOW TO ORDER 編號說明

1	2	3
VRBP	02	*

#### 1 VALVE SERIES 系列名稱

VRBP= CARTRIDGE TYPE REDUCING / RELIEVING VALVES (PILOT CONTROL VALVES)  
插入式減泄壓閥(導壓級)

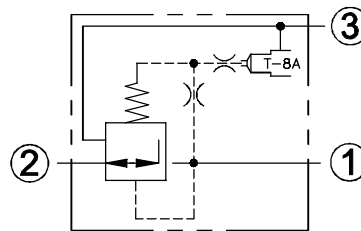
#### 2 SUBPLATE MOUNTING SIZE 稱呼口徑

02: T-11A  
Cavity 孔口: CST-11A  
See Page Appendixes-A\_006  
見附錄A\_006 頁面

#### 3 MINIMUM CONTROL PRESSURE 最低控制壓力

17	1.7 bar (25psi)
70	7.0 bar (100psi)

### ◆ CONTROL PORT(S) 動作形式



### ◆ DIMENSIONS 外型尺寸圖

