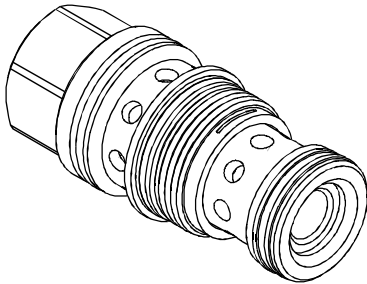


PRESSURE CONTROL VALVES 壓力控制閥

VRBP SERIES CARTRIDGE REDUCING / RELIEVING VALVES (PILOT CONTROL VALVES) VRBP系列插入式減泄壓閥(導壓級)

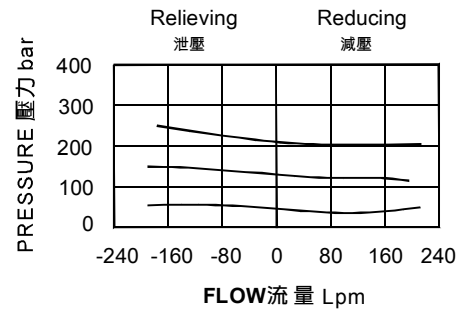
◆ MODEL 型 式 VRBP-06



◆ DESCRIPTION 說明

The-8 control option allows a pilot control valve to be incorporated directly into the end of the modulating element via the T-8A cavity. These pilot control cartridges are sold separately and include electro-proportional, solenoid, air pilot, and hydraulic pilot operation.
T-8A控制是用導壓級控制閥直接插在減壓閥六角頭上的T-8A插孔中,導壓級控制閥需單獨訂購包括比例閥、電磁閥、氣導和液導。

◆ PERFORMANCE 特性曲線



◆ SPECIFICATIONS 規 格

Model Number 型式號碼	Operating Pressure 操作壓力 bar	Flow 流量 lpm	Weight 重量 Kg
VRBP-06	350 (5076 psi)	160 (42.27 gpm)	0.50 (1.10 lbs)
Fluid Type 流體型式		ISO VG 32, 46, 68	
Viscosity 黏性 cSt		10~400 (59~1854 SSU)	
Operating Temperature 操作溫度 °C		-30~100 (-22~212°F)	
Contamination Level 污染標準		ISO4406. 21/19/16 NAS1638,10	

◆ HOW TO ORDER 編號說明

1	2	3
VRBP	06	*

1 VALVE SERIES 系列名稱

VRBP= CARTRIDGE TYPE REDUCING / RELIEVING VALVES (PILOT CONTROL VALVES)
插入式減泄壓閥(導壓級)

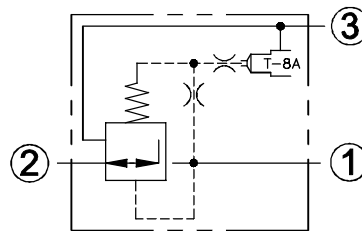
2 SUBPLATE MOUNTING SIZE 稱呼口徑

06 : T-17A
Cavity 孔口: CST-17A
See Page Appendixes-A_007
見附錄A_007頁面

3 MINIMUM CONTROL PRESSURE 最低控制壓力

17	1.7 bar (25psi)
70	7.0 bar (100psi)

◆ CONTROL PORT(S) 動作形式



◆ DIMENSIONS 外型尺寸圖

