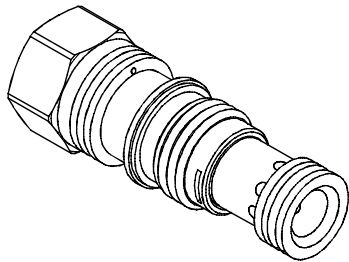


◆ MODEL 型 式

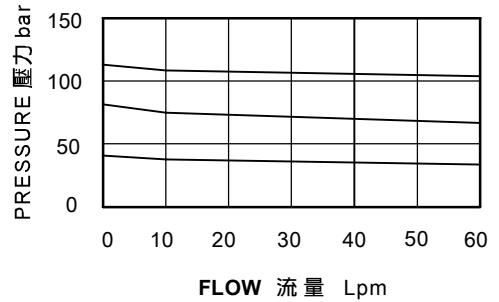
VBRP-02



◆ DESCRIPTION 說明

The-8 control option allows a pilot control valve to be incorporated directly into the end of the modulating element via the T-8A cavity . These pilot control cartridges are sold separately and include electro-proportional . Hydraulic pilot operation .
T-8A控制是用導壓級控制閥直接插在減壓閥六角頭上的T-8A插孔中,導壓級控制閥需單獨訂購包括比例閥.液導.

◆ PERFORMANCE 特性曲線



◆ SPECIFICATIONS 規 格

Model Number 型式號碼	Operating Pressure 操作壓力 bar	Flow 流量 lpm	Weight 重量 Kg
VBRP-02	350 (5076 psi)	40 (10.57 gpm)	0.15 (0.33 lbs)
Fluid Type 流體型式		ISO VG 32 , 46 , 68	
Viscosity 黏性 cSt		10~400 (59~1854 SSU)	
Operating Temperature 操作溫度 °C		-30~100 (-22~212°F)	
Contamination Level 污染標準		ISO4406. 21/19/16 NAS1638,10	

◆ HOW TO ORDER 編號說明

1	2	3
VBRP	02	— *

1 VALVE SERIES 系列名稱

VBRP= CARTRIDGE TYPE REDUCING VALVES
(PILOT CONTROL VALVES)
插入式減壓閥(導壓級)

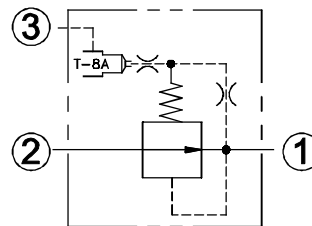
2 SUBPLATE MOUNTING SIZE 稱呼口徑

02 :T-11A
Cavity 孔口:CST-11A
See Page Appendixes-A_006
見附錄A_006頁面

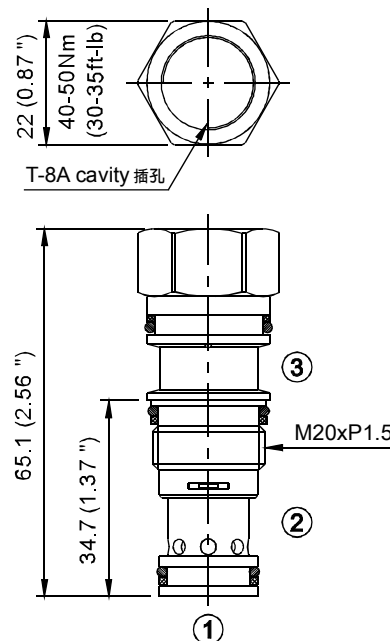
3 MINIMUM CONTROL PRESSURE 最低控制壓力

17	1.7 bar (25psi)
70	7.0 bar (100psi)

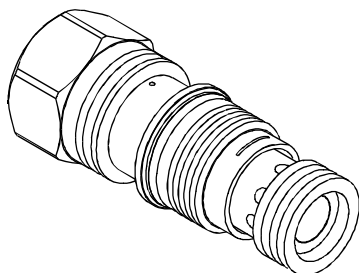
◆ CONTROL PORT(S) 動作形式



◆ DIMENSIONS 外型尺寸圖



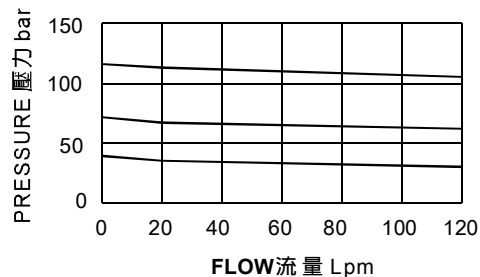
◆ **MODEL** 型 式
VBRP-03



◆ **DESCRIPTION** 說明

The -8 control option allows a pilot control valve to be incorporated directly into the end of the modulating element via the T-8A cavity. These pilot control cartridges are sold separately and include electro-proportional. Hydraulic pilot operation. T-8A控制是用導壓級控制閥直接插在減壓閥六角頭上的T-8A插孔中,導壓級控制閥需單獨訂購包括比例閥、液導。

◆ **PERFORMANCE** 特性曲線



◆ **SPECIFICATIONS** 規 格

Model Number 型式號碼	Operating Pressure 操作壓力 bar	Flow 流量 lpm	Weight 重量 Kg
VBRP-03	350 (5076 psi)	80 (21.13 gpm)	0.27 (0.59 lbs)
Fluid Type 流體型式		ISO VG 32, 46, 68	
Viscosity 黏性 cSt		10~400 (59~1854 SSU)	
Operating Temperature 操作溫度 °C		-30~100 (-22~212°F)	
Contamination Level 污染標準		ISO4406. 21/19/16 NAS1638,10	

◆ **HOW TO ORDER** 編號說明

1	2	3
VBRP	03	— *

1 **VALVE SERIES** 系列名稱

VBRP= CARTRIDGE TYPE REDUCING VALVES (PILOT CONTROL VALVES)
插入式減壓閥(導壓級)

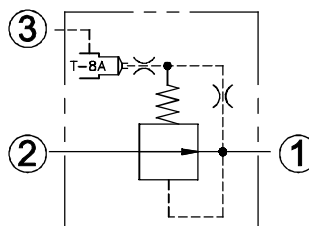
2 **SUBPLATE MOUNTING SIZE** 稱呼口徑

03 : T-2A
Cavity 孔口: CST-2A
See Page Appendixes-A_006
見附錄A_006頁面

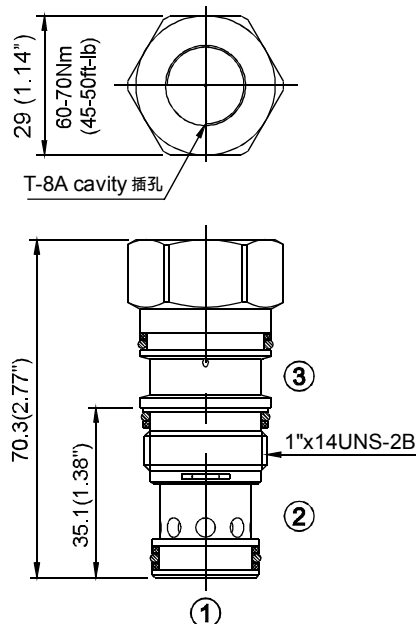
3 **MINIMUM CONTROL PRESSURE** 最低控制壓力

17	1.7 bar (25psi)
70	7.0 bar (100psi)

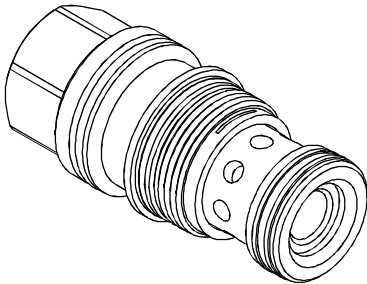
◆ **CONTROL PORT(S)** 動作形式



◆ **DIMENSIONS** 外型尺寸圖



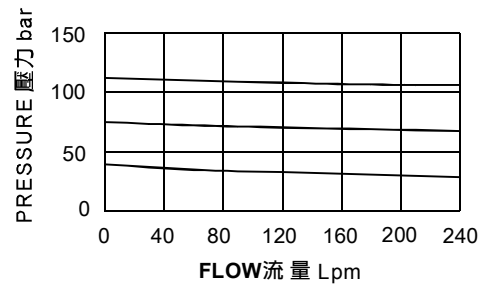
◆ MODEL 型 式 VBRP-06



◆ DESCRIPTION 說明

The -8 control option allows a pilot control valve to be incorporated directly into the end of the modulating element via the T-8A cavity. These pilot control cartridges are sold separately and include electro-proportional. Hydraulic pilot operation.
T-8A控制是用導壓級控制閥直接插在減壓閥六角頭上的T-8A插孔中,導壓級控制閥需單獨訂購包括比例閥、液導。

◆ PERFORMANCE 特性曲線



◆ SPECIFICATIONS 規 格

Model Number 型式號碼	Operating Pressure 操作壓力 bar	Flow 流量 lpm	Weight 重量 Kg
VBRP-06	350 (5076 psi)	160 (42.27 gpm)	0.50 (1.10 lbs)
Fluid Type 流體型式		ISO VG 32, 46, 68	
Viscosity 黏性 cSt		10~400 (59~1854 SSU)	
Operating Temperature 操作溫度 °C		-30~100 (-22~212°F)	
Contamination Level 污染標準		ISO4406. 21/19/16 NAS1638,10	

◆ HOW TO ORDER 編號說明

1	2	3
VBRP	06	*

1 VALVE SERIES 系列名稱

VBRP= CARTRIDGE TYPE REDUCING VALVES
(PILOT CONTROL VALVES)
插入式減壓閥(導壓級)

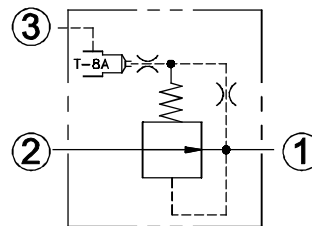
2 SUBPLATE MOUNTING SIZE 稱呼口徑

06 : T-17A
Cavity 孔口: CST-17A
See Page Appendixes-A_007
見附錄A_007頁面

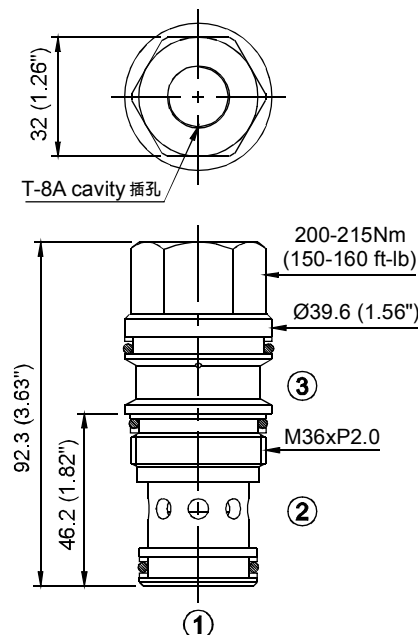
3 MINIMUM CONTROL PRESSURE 最低控制壓力

17	1.7 bar (25psi)
70	7.0 bar (100psi)

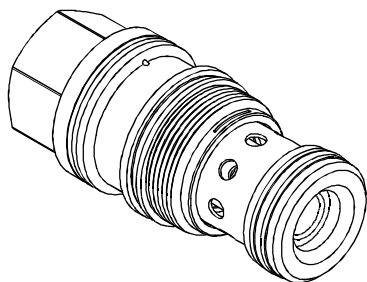
◆ CONTROL PORT(S) 動作形式



◆ DIMENSIONS 外型尺寸圖



◆ **MODEL** 型 式
VBRP-10

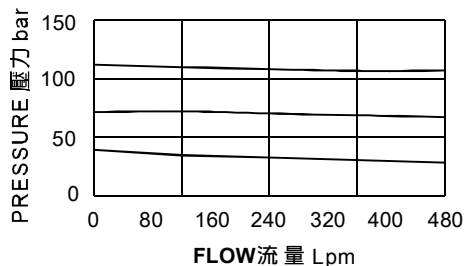


◆ **DESCRIPTION** 說明

The-8 control option allows a pilot control valve to be incorporated directly into the end of the modulating element via the T-8A cavity . These pilot control cartridges are sold separately and include electro-proportional . Hydraulic pilot operation .

T-8A控制是用導壓級控制閥直接插在減壓閥六角頭上的T-8A插孔中,導壓級控制閥需單獨訂購包括比例閥.液導.

◆ **PERFORMANCE** 特性曲線



◆ **SPECIFICATIONS** 規 格

Model Number 型式號碼	Operating Pressure 操作壓力 bar	Flow 流量 lpm	Weight 重量 Kg
VBRP-10	350 (5076 psi)	320 (84.54 gpm)	1.08 (2.38 lbs)
Fluid Type 流體型式		ISO VG 32 , 46 , 68	
Viscosity 黏性 cSt		10~400 (59~1854 SSU)	
Operating Temperature 操作溫度 °C		-30~100 (-22~212°F)	
Contamination Level 污染標準		ISO4406. 21/19/16 NAS1638,10	

◆ **HOW TO ORDER** 編號說明

1	2	3
VBRP	10	— *

1 VALVE SERIES 系列名稱

VBRP= CARTRIDGE TYPE REDUCING VALVES
(PILOT CONTROL VALVES)
插入式減壓閥(導壓級)

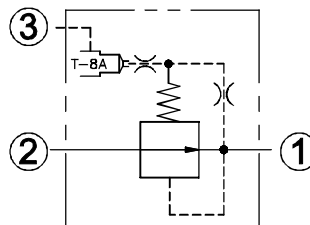
2 SUBPLATE MOUNTING SIZE 稱呼口徑

10 :T-19A
Cavity 孔口:CST-19A
See Page Appendixes-A_007
見附錄A_007頁面

3 MINIMUM CONTROL PRESSURE 最低控制壓力

17	1.7 bar (25psi)
70	7.0 bar (100psi)

◆ **CONTROL PORT(S)** 動作形式



◆ **DIMENSIONS** 外型尺寸圖

