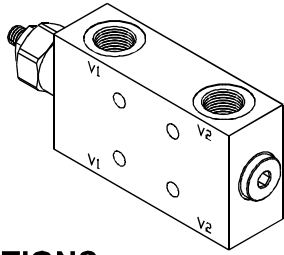


PRESSURE CONTROL VALVES 壓力控制閥

VBSE SERIES CARTRIDGE TYPE COUNTER BALANCE VALVES VBSE 系列插入式抗衡閥

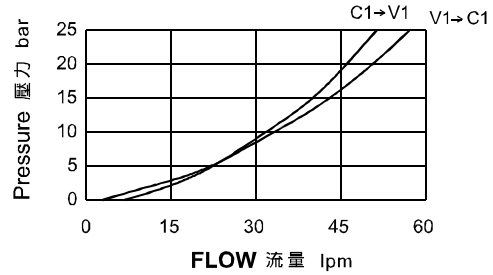
◆ MODEL 型 式

VBSE-102G/103G/104G



◆ PERFORMANCE (Cartridge Only)

特性曲線



◆ SPECIFICATIONS 規 格

Model Number 型式號碼	Maximum Pressure 最大壓力 bar	Adjustment Pressure 壓力調整範圍 bar	Maximum Flow 最大流量 lpm	Pilot Ratio 引導比例	Weight 重量 Kg
VBSE-102G	500 (7252 psi)	100~350	20 (5.28 gpm)	4.3 : 1	1.8 (3.97 lbs)
VBSE-103G			45 (11.89 gpm)		1.8 (3.97 lbs)
VBSE-104G			60 (15.85 gpm)		2.0 (4.41 lbs)
Fluid Type 流體型式		ISO VG 32, 46, 68			
Viscosity 黏性 cSt		10~400 (59~1854 SSU)			
Operating Temperature 操作溫度 °C		-15~70 (-5~158 F)			
Contamination Level 污染標準		ISO4406. 21/19/16 NAS1638,10			

◆ HOW TO ORDER 編號說明

1	2	3	4
VBSE	103G	*	*

1 VALVE SERIES 系列名稱

VBSE=COUNTER BALANCE VALVES
抗衡閥

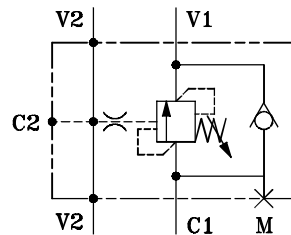
2 SUBPLATE MOUNTING SIZE 稱呼口徑

102G : G1/4 104G : G1/2
103G : G3/8

3 ADJUSTMENT PRESSURE 壓力調整範圍

Order 編號	Adjustment pressure 壓力調整範圍
35	100 ~ 350 (bar)

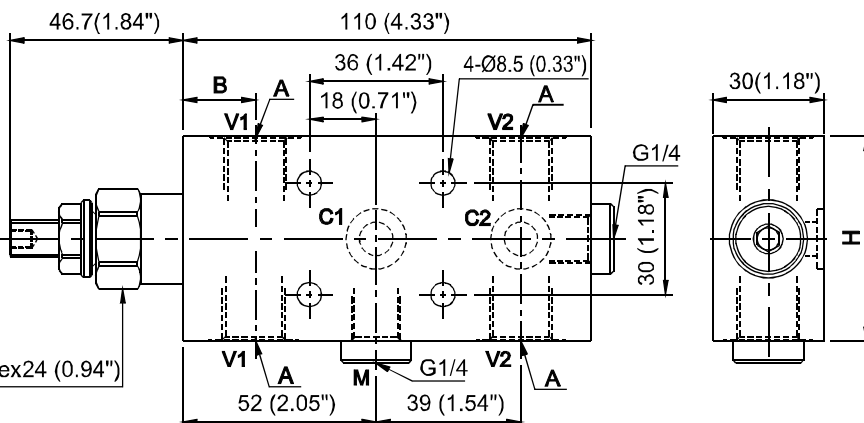
◆ CONTROL PORT(S) 動作形式



4 PILOT RATIO 引導比例

4A : 4.3:1

◆ DIMENSIONS 外型尺寸圖



Model 型式	Size 尺寸	A	B	H
VBSE-102G	G1/4	19.5 (0.77")	55 (2.16")	
VBSE-103G	G3/8	19.5 (0.77")	55 (2.16")	
VBSE-104G	G1/2	18 (0.71")	65 (2.56")	