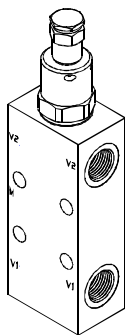
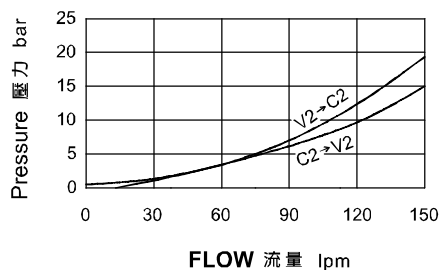


◆ **MODEL 型式**
VBSE-104F



◆ **PERFORMANCE (Cartridge Only)**

特性曲線



◆ **SPECIFICATIONS 規格**

Model Number 型式號碼	Maximum Pressure 最大壓力 bar	Adjustment Pressure 壓力調整範圍 bar	Maximum Flow 最大流量 lpm	Pilot Ratio 引導比例	Weight 重量 Kg
VBSE-104F	500 (7252 psi)	100~350	150 (39.63 gpm)	4 : 1	2.5 (5.51 lbs)
Fluid Type 流體型式			ISO VG 32, 46, 68		
Viscosity 黏性 cSt			10~400 (59~1854 SSU)		
Operating Temperature 操作溫度 °C			-15~70 (-5~158 °F)		
Contamination Level 污染標準			ISO4406. 21/19/16 NAS1638,10		

◆ **HOW TO ORDER 編號說明**

1	2	3	4
VBSE	104F	— *	— *

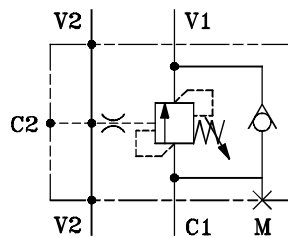
1 VALVE SERIES 系列名稱
VBSE=COUNTER BALANCE VALVES
抗衡閥

2 SUBPLATE MOUNTING SIZE 稱呼口徑
104F : G1/2"

3 ADJUSTMENT PRESSURE 壓力調整範圍

Order 編號	Adjustment pressure 壓力調整範圍
35	100 ~ 350 (bar)

◆ **CONTROL PORT(S) 動作形式**



4 THREADED TYPE 螺紋規格

1P : PT 3G : PF(G) 5B : BSP
2N : NPT 4A : SAE

◆ **DIMENSIONS**

外型尺寸圖

