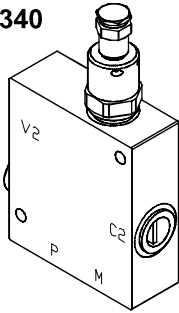


◆ **MODEL 型 式**

VBSE-340



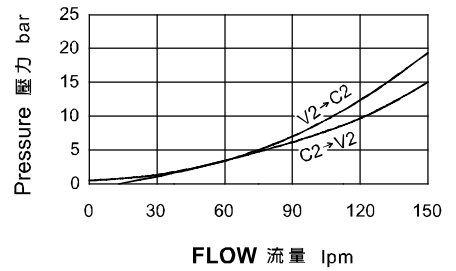
◆ **DESCRIPTION 說明**

Single overcenter valves, to be connected as shown. The oil flow from the screw side, is added to the pump flow, to speed the cylinder extension with low load. The function of counterbalance and relief are affected, when the pilot pressure exceed a preset value.

單一抗衡閥，連接如所示，來自螺桿側的流量，加上泵流量來加速油壓缸，在低承載時的速度，當引導壓力超過設定值時，此閥就有抗衡及洩荷的功能。

◆ **PERFORMANCE(Cartridge Only)**

特性曲線



◆ **SPECIFICATIONS 規 格**

Model Number 型式號碼	Maximum Pressure 最大壓力 bar	Adjustment Pressure 壓力調整範圍 bar	Maximum Flow 最大流量 lpm	Pilot Ratio 引導比例	Weight 重量 Kg
VBSE-340	500 (7252 psi)	100~350	150 (39.63 gpm)	4 : 1	3.6 (7.94 lbs)
Fluid Type 流體型式			ISO VG 32 , 46 , 68		
Viscosity 黏性 cSt			10~400 (59~1854 SSU)		
Operating Temperature 操作溫度 °C			-15~70 (-5~158 °F)		
Contamination Level 污染標準			ISO4406. 21/19/16 NAS1638,10		

◆ **HOW TO ORDER 編號說明**

1	2	3	4
VBSE	340	— *	— *

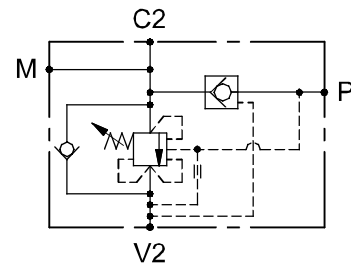
1 VALVE SERIES 系列名稱
VBSE=COUNTER BALANCE VALVES
抗衡閥

2 SUBPLATE MOUNTING SIZE 稱呼口徑
340 : G3/4"

3 ADJUSTMENT PRESSURE 壓力調整範圍

Order 編號	Adjustment pressure 壓力調整範圍
35	100 ~ 350 (bar)

◆ **CONTROL PORT(S) 動作形式**



4 THREADED TYPE 螺紋規格
1P : PT 3G : PF(G) 5B : BSP
2N : NPT 4A : SAE

◆ **DIMENSIONS 外型尺寸圖**

外型尺寸圖

