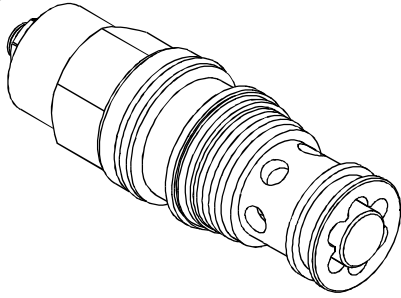
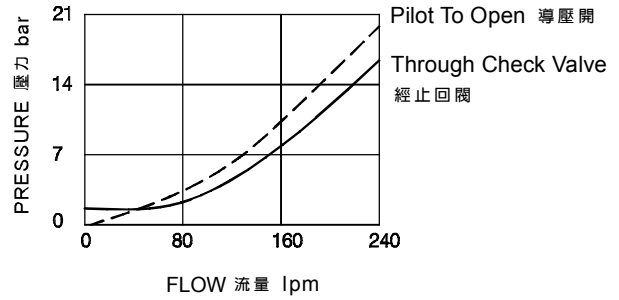


### ◆ MODEL 型 式

VCB-06



### ◆ PERFORMANCE(Cartridge Only) 特性曲線



### ◆ SPECIFICATIONS 規 格

Model Number 型式號碼	Maximum Pressure 最大壓力 bar	Pilot Ratio 引導比例	Adjustment Pressure 壓力調整範圍 bar	Maximum Flow 最大流量 lpm	Weight 重量 Kg
VCB-06	350 ( 5076 psi)	1.5:1/2.3:1/3:1/4.5:1/10:1	* ~ 350	240 (63.40 gpm)	0.61 (1.35 lbs)
Fluid Type 流體型式			ISO VG 32, 46, 68		
Viscosity 黏性 cSt			10~400 (59~1854 SSU)		
Operating Temperature 操作溫度 °C			-15~70 (-5~158°F)		
Contamination Level 污染標準			ISO4406. 21/19/16 NAS1638,10		

### ◆ HOW TO ORDER 編號說明

1	2	3	4	5
VCB	06	— 10	— 3A	— *

#### 1 VALVE SERIES 系列名稱

VCB = Overcentre Valve Pilot Assisted Relief With Check  
引導式抗衡洩載閥

#### 2 PORTING 開口

06:T-17A

Cavity 孔口: CST-17A

See Page Appendixes-A\_007

見附錄A\_007 頁面

#### 3 ADJUSTMENT PRESSURE 壓力調整範圍

Check Spring Pressure 1.8bar 止逆閥彈簧壓力 1.8bar		
Order 編號	Adjustment pressure 壓力調整範圍	Pilot ratio 引導比例
10	25 ~ 105 (bar)	1.5:1
28	70 ~ 280 (bar)	3:1
17	70 ~ 175 (bar)	2.3:1
35	140 ~ 350 (bar)	4.5:1 10:1

Check Spring Pressure 0.3bar 止逆閥彈簧壓力 0.3bar		
Order 編號	Adjustment pressure 壓力調整範圍	Pilot ratio 引導比例
25	25 ~ 105 (bar)	1.5:1
70	70 ~ 280 (bar)	3:1
80	70 ~ 175 (bar)	2.3:1
14	140 ~ 350 (bar)	4.5:1 10:1

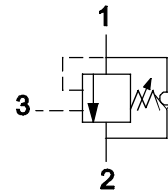
#### 4 PILOT RATIO 引導比例

- 1.5A : 1.5:1 (With sealed pilot) 導壓室密封
- 2.3A : 2.3:1 (With sealed pilot) 導壓室密封
- 3A : 3:1 (With sealed pilot) 導壓室密封
- 4A : 4.5:1 (With sealed pilot) 導壓室密封
- 10A : 10:1 (With sealed pilot) 導壓室密封

#### 5 ADJUSTMENT OPTION 調整選擇

NONE	NONE:TOOL ADJUST 無：工具調整式	
C	C:TAMPER RESISTANT COVER C：防調封蓋	

#### ◆ CONTROL PORT(S) 動作形式



#### ◆ DIMENSIONS 外型尺寸圖

