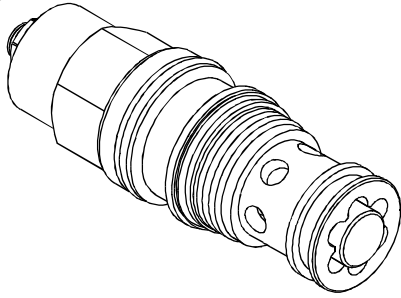
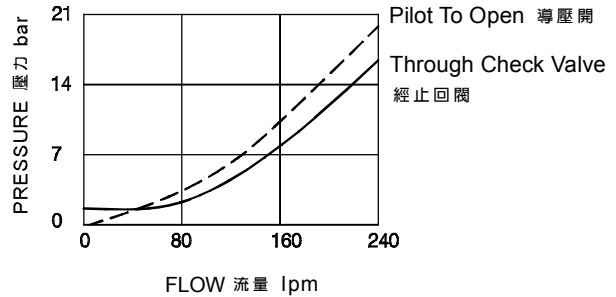


◆ MODEL 型 式

VCB-06



◆ PERFORMANCE(Cartridge Only) 特性曲線



◆ SPECIFICATIONS 規 格

Model Number 型式號碼	Maximum Pressure 最大壓力 bar	Pilot Ratio 引導比例	Adjustment Pressure 壓力調整範圍 bar	Maximum Flow 最大流量 lpm	Weight 重量 Kg
VCB-06	350 (5076 psi)	1.5:1/2:1/2.3:1/3:1/4.5:1/ 10:1	* ~ 350	240 (63.40 gpm)	0.61 (1.35 lbs)
Fluid Type 流體型式			ISO VG 32, 46, 68		
Viscosity 黏性 cSt			10~400 (59~1854 SSU)		
Operating Temperature 操作溫度 °C			-30~100 (-22~212°F)		
Contamination Level 污染標準			ISO4406. 20/18/15 NAS1638. 9		

◆ HOW TO ORDER 編號說明

1	2	3	4	5
VCB	06	— 10	— 3A	— *

1 VALVE SERIES 系列名稱

VCB = Overcentre Valve Pilot Assisted Relief With Check
引導式抗衡洩載閥

2 PORTING 開口

06:T-17A

Cavity 孔口: CST-17A

See Appendixes-A 見附錄A

For Manifold See Appendixes-B 油路板見附錄B

3 ADJUSTMENT PRESSURE 壓力調整範圍

Check Spring Pressure 1.8bar 止逆閥彈簧壓力 1.8bar		
Code 編碼	Adjustment pressure 壓力調整範圍	Pilot ratio 引導比例
10	25 ~ 105 (bar)	1.5:1
28	70 ~ 280 (bar)	2:1
17	70 ~ 175 (bar)	3:1
35	140 ~ 350 (bar)	2.3:1
		4.5:1
		10:1

Check Spring Pressure 0.3bar 止逆閥彈簧壓力 0.3bar		
Code 編碼	Adjustment pressure 壓力調整範圍	Pilot ratio 引導比例
25	25 ~ 105 (bar)	1.5:1
70	70 ~ 280 (bar)	2:1
80	70 ~ 175 (bar)	3:1
14	140 ~ 350 (bar)	2.3:1
		4.5:1
		10:1

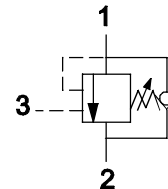
4 PILOT RATIO 引導比例

- 1.5A : 1.5:1 (With sealed pilot) 導壓室密封
- 2A : 2:1 (With bleed through pilot) 透流導壓
- 2.3A : 2.3:1 (With sealed pilot) 導壓室密封
- 3A : 3:1 (With sealed pilot) 導壓室密封
- 4A : 4.5:1 (With sealed pilot) 導壓室密封
- 10A : 10:1 (With sealed pilot) 導壓室密封

5 ADJUSTMENT OPTION 調整選擇

NONE	NONE: TOOL ADJUST 無：工具調整式	
C	C: TAMPER RESISTANT COVER C：防調封蓋	

◆ CONTROL PORT(S) 動作形式



◆ DIMENSIONS 外型尺寸圖

