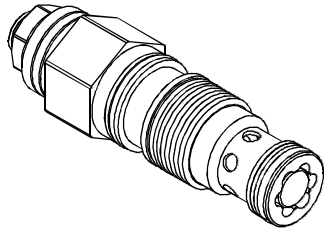


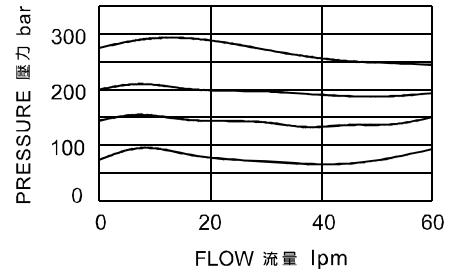
◆ **MODEL 型 式**
VCBB-02



◆ **DESCRIPTION 說明**

Counterbalance valves without pilot assist are meant to control an overrunning load. The check valve allows free flow from the directional valve (port 2) to the load (port 1) While a direct-acting relief valve controls flow from port 1 to port 2. Lower pilot ratios (pilot gain) promote machine stability. This valve has a pilot ratio of zero. Stability is gained at the expense of efficiency. 不帶先導協助開啟的平衡閥是用來控制超馳負載,它允許油液從方向閥(口2)到負載口(口1)單向自由流通,同時直動式溢流閥功能可以控制從口1到口2液的溢流。低先導比(先導增益)使系統更穩定,這款閥的先導比為0,穩定是以犧牲效率為代價的。

◆ **PERFORMANCE(Cartridge Only) 特性曲線**



◆ **SPECIFICATIONS 規 格**

Model Number 型式號碼	Maximum Pressure 最大壓力 bar	Adjustment Pressure 壓力調整範圍 bar	Maximum Flow 最大流量 lpm	Weight 重量 Kg
VCBB-02	350 (5076 psi)	* ~ 350	60 (15.85 gpm)	0.2 (0.44 lbs)
Fluid Type 流體型式		ISO VG 32 , 46 , 68		
Viscosity 黏性 cSt		10~400 (59~1854 SSU)		
Operating Temperature 操作溫度 °C		-15~70 (-5~158 °F)		
Contamination Level 污染標準		ISO4406. 21/19/16 NAS1638,10		

◆ **HOW TO ORDER 編號說明**

1	2	3
VCBB	02	10

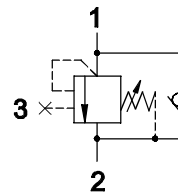
1 VALVE SERIES 系列名稱
VCBB = Cartridge Type Counter Balance Valves (Without Pilot Assist)
插入式抗衝閥(無輔助導壓)

2 PORTING 閘口
02:T-11A
Cavity 孔口: CST-11A
See Page Appendixes-A_006
見附錄A_006 頁面

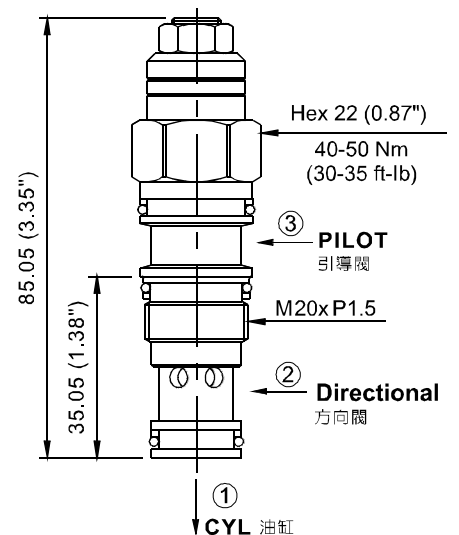
3 ADJUSTMENT PRESSURE 壓力調整範圍

Check Spring Pressure 1.8bar 止逆閥彈簧壓力 1.8bar		Check Spring Pressure 0.3bar 止逆閥彈簧壓力 0.3bar	
Order 編號	Adjustment pressure 壓力調整範圍	Order 編號	Adjustment pressure 壓力調整範圍
10	25 ~ 105 (bar)	25	25 ~ 105 (bar)
28	70 ~ 280 (bar)	70	70 ~ 280 (bar)

◆ **CONTROL PORT(S) 動作形式**



◆ **DIMENSIONS 外型尺寸圖**

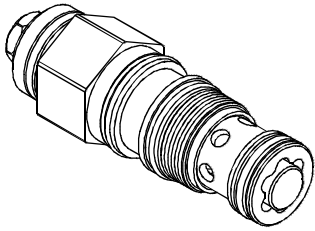


PRESSURE CONTROL VALVES 壓力控制閥

VCBB SERIES CARTRIDGE TYPE COUNTER BALANCE VALVES (WITHOUT PILOT ASSIST) VCBB 系列插入式抗衡閥(無輔助導壓)

◆ MODEL 型 式

VCBB-03

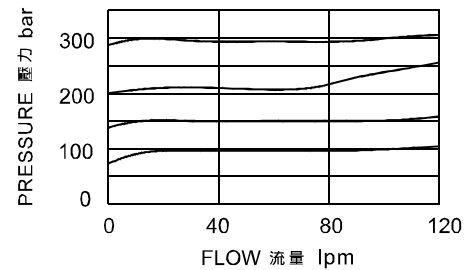


◆ DESCRIPTION 說明

Counterbalance valves without pilot assist are meant to control an overrunning load. The check valve allows free flow from the directional valve (port 2) to the load (port 1) While a direct-acting relief valve controls flow from port 1 to port 2. Lower pilot ratios (pilot gain) promote machine stability. This valve has a pilot ratio of zero. Stability is gained at the expense of efficiency. 不帶先導協助開啟的平衡閥是用來控制超馳負載。它允許油液從方向閥(口2)到負載口(口1)單向自由流通,同時直動式溢流閥功能可以控制從口1到口2液的溢流。低先導比(先導增益)使系統更穩定。這款閥的先導比為0,穩定是以犧牲效率為代價的。

◆ PERFORMANCE (Cartridge Only)

特性曲線



◆ SPECIFICATIONS 規 格

Model Number 型式號碼	Maximum Pressure 最大壓力 bar	Adjustment Pressure 壓力調整範圍 bar	Maximum Flow 最大流量 lpm	Weight 重量 Kg
VCBB-03	350 (5076 psi)	* ~ 350	120 (31.70 gpm)	0.3 (0.68 lbs)
Fluid Type 流體型式		ISO VG 32 , 46 , 68		
Viscosity 黏性 cSt		10~400 (59~1854 SSU)		
Operating Temperature 操作溫度 °C		-15~70 (-5~158 °F)		
Contamination Level 污染標準		ISO4406. 21/19/16 NAS1638,10		

◆ HOW TO ORDER 編號說明

1	2	3
VCBB	03	10

1 VALVE SERIES 系列名稱

VCBB = Cartridge Type Counter Balance Valves
(Without Pilot Assist)
插入式抗衡閥(無輔助導壓)

2 PORTING 閥口

03:T-2A

Cavity 孔口: CST-2A

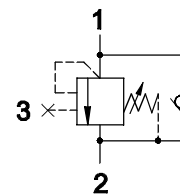
See Page Appendixes-A_006

見附錄A_006 頁面

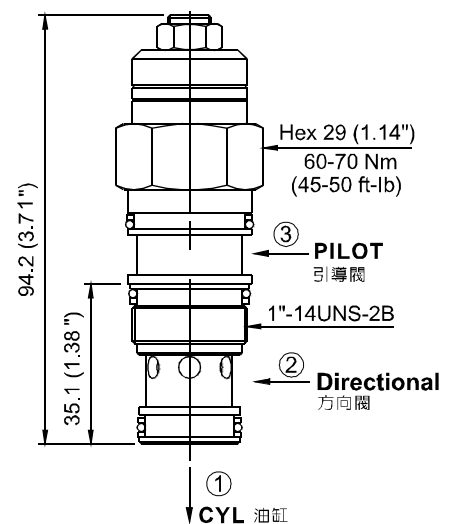
3 ADJUSTMENT PRESSURE 壓力調整範圍

Check Spring Pressure 1.8bar 止逆閥彈簧壓力 1.8bar		Check Spring Pressure 0.3bar 止逆閥彈簧壓力 0.3bar	
Order 編號	Adjustment pressure 壓力調整範圍	Order 編號	Adjustment pressure 壓力調整範圍
10	25 ~ 105 (bar)	25	25 ~ 105 (bar)
28	70 ~ 280 (bar)	70	70 ~ 280 (bar)

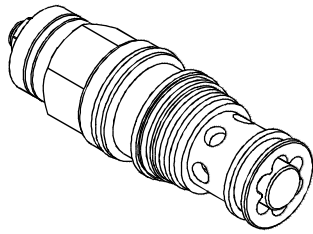
◆ CONTROL PORT(S) 動作形式



◆ DIMENSIONS 外型尺寸圖



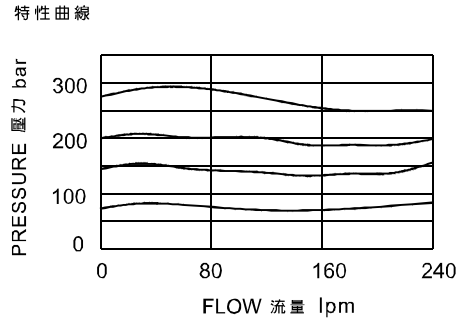
◆ **MODEL 型 式**
VCBB-06



◆ **DESCRIPTION 說明**

Counterbalance valves without pilot assist are meant to control an overrunning load. The check valve allows free flow from the directional valve (port 2) to the load (port 1). While a direct-acting relief valve controls flow from port 1 to port 2. Lower pilot ratios (pilot gain) promote machine stability. This valve has a pilot ratio of zero. Stability is gained at the expense of efficiency. 不帶先導協助開閉的平衡閥是用來控制超馳負載。它允許油液從方向閥(口2)到負載口(口1)單向自由流通,同時直動式溢流閥功能可以控制從口1到口2液的溢流。低先導比(先導增益)使系統更穩定。這款閥的先導比為0。穩定是以犧牲效率為代價的。

◆ **PERFORMANCE(Cartridge Only)**



◆ **SPECIFICATIONS 規 格**

Model Number 型式號碼	Maximum Pressure 最大壓力 bar	Adjustment Pressure 壓力調整範圍 bar	Maximum Flow 最大流量 lpm	Weight 重量 Kg
VCBB-06	350 (5076 psi)	* ~ 350	240 (63.40 gpm)	0.61 (1.35 lbs)
Fluid Type 流體型式		ISO VG 32 , 46 , 68		
Viscosity 黏性 cSt		10~400 (59~1854 SSU)		
Operating Temperature 操作溫度 °C		-15~70 (-5~158 °F)		
Contamination Level 污染標準		ISO4406. 21/19/16 NAS1638,10		

◆ **HOW TO ORDER 編號說明**

1	2	3
VCBB	06	10

1 VALVE SERIES 系列名稱
VCBB = Cartridge Type Counter Balance Valves (Without Pilot Assist)
插入式抗衝閥(無輔助導壓)

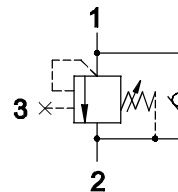
2 PORTING 閘口

06:T-17A
Cavity 孔口: CST-17A
See Page Appendixes-A_007
見附錄A_007 頁面

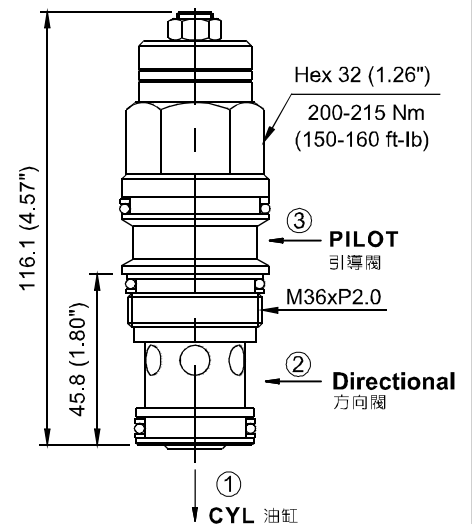
3 ADJUSTMENT PRESSURE 壓力調整範圍

Check Spring Pressure 1.8bar 止逆閥彈簧壓力 1.8bar		Check Spring Pressure 0.3bar 止逆閥彈簧壓力 0.3bar	
Order 編號	Adjustment pressure 壓力調整範圍	Order 編號	Adjustment pressure 壓力調整範圍
10	25 ~ 105 (bar)	25	25 ~ 105 (bar)
28	70 ~ 280 (bar)	70	70 ~ 280 (bar)

◆ **CONTROL PORT(S) 動作形式**



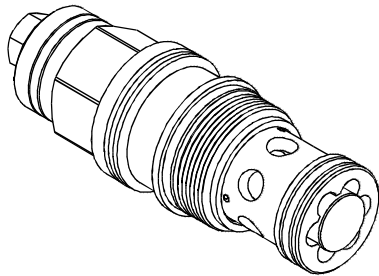
◆ **DIMENSIONS 外型尺寸圖**



PRESSURE CONTROL VALVES 壓力控制閥

VCBB SERIES CARTRIDGE TYPE COUNTER BALANCE VALVES (WITHOUT PILOT ASSIST) VCBB 系列插入式抗衡閥(無輔助導壓)

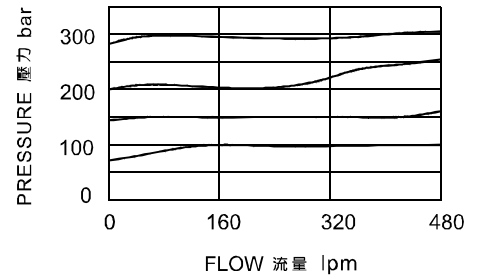
◆ MODEL 型 式 VCBB-10



◆ DESCRIPTION 說明

Counterbalance valves without pilot assist are meant to control an overrunning load. The check valve allows free flow from the directional valve (port 2) to the load (port 1) While a direct-acting relief valve controls flow from port 1 to port 2. Lower pilot ratios (pilot gain) promote machine stability. This valve has a pilot ratio of zero. Stability is gained at the expense of efficiency. 不帶先導協助開啟的平衡閥是用來控制超馳負載。它允許油液從方向閥(口2)到負載口(口1)單向自由流通,同時直動式溢流閥功能可以控制從口1到口2液的溢流。低先導比(先導增益)使系統更穩定。這款閥的先導比為0。穩定是以犧牲效率為代價的。

◆ PERFORMANCE (Cartridge Only) 特性曲線



◆ SPECIFICATIONS 規 格

Model Number 型式號碼	Maximum Pressure 最大壓力 bar	Adjustment Pressure 壓力調整範圍 bar	Maximum Flow 最大流量 lpm	Weight 重量 Kg
VCBB-10	350 (5076 psi)	* ~ 350	480 (105.58 gpm)	1.6 (3.53 lbs)
Fluid Type 流體型式		ISO VG 32, 46, 68		
Viscosity 黏性 cSt		10~400 (59~1854 SSU)		
Operating Temperature 操作溫度 °C		-15~70 (-5~158°F)		
Contamination Level 污染標準		ISO4406. 21/19/16 NAS1638,10		

◆ HOW TO ORDER 編號說明

1	2	3
VCBB	10	10

1 VALVE SERIES 系列名稱
VCBB = Cartridge Type Counter Balance Valves (Without Pilot Assist)
插入式抗衡閥(無輔助導壓)

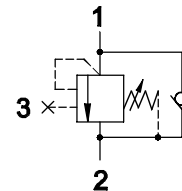
2 PORTING 閥口

10:T-19A
Cavity 孔口:CST-19A
See Page Appendixes-A_007
見附錄A_007 頁面

3 ADJUSTMENT PRESSURE 壓力調整範圍

Check Spring Pressure 1.8bar 止逆閥彈簧壓力 1.8bar		Check Spring Pressure 0.3bar 止逆閥彈簧壓力 0.3bar	
Order 編號	Adjustment pressure 壓力調整範圍	Order 編號	Adjustment pressure 壓力調整範圍
10	25 ~ 105 (bar)	25	25 ~ 105 (bar)
28	70 ~ 280 (bar)	70	70 ~ 280 (bar)

◆ CONTROL PORT(S) 動作形式



◆ DIMENSIONS 外型尺寸圖

