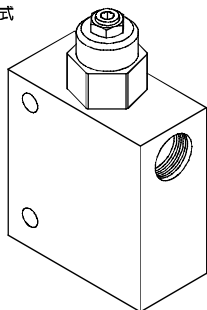
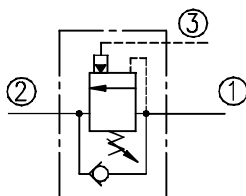


◆ **MODEL 型 式**
VCBD-02



◆ **CONTROL PORT(S)**
動作形式



Body Material 閥體材質	Maximum Pressure 最大壓力 bar	Weight 重量 Kg
Aluminum (standard) 鋁 (標準)	240 (3481 psi)	0.63 (1.39 lbs)
Nodular Ductile-Iron 球墨鑄鐵	350 (5076 psi)	1.35 (2.98 lbs)
Steel 鋼	350 (5076 psi)	1.35 (2.98 lbs)

◆ **SPECIFICATIONS 規 格**

Model Number 型式號碼	Maximum Pressure 最大壓力 bar	Adjustment Pressure 壓力調整範圍 bar	Maximum Flow 最大流量 lpm	Pilot Ratio 引導比例	Weight 重量 Kg
VCBD-02	350 (5076 psi)	* ~350	60 (15.85 gpm)	1.5:1 / 3:1 / 4.5:1 / 10:1	1.35 (2.98 lbs)
Fluid Type 流體型式			ISO VG 32, 46, 68		
Viscosity 黏性 cSt			10~400 (59~1854 SSU)		
Operating Temperature 操作溫度 °C			-15~70 (-5~158 °F)		
Contamination Level 污染標準			ISO4406. 21/19/16 NAS1638,10		

◆ **HOW TO ORDER 編號說明**

1	2	3	4	5	6	7
VCBD	02	— 28	— *	— *	— *	— *

1 VALVE SERIES 系列名稱

VCBD= Overcentre Valves Pilot Assisted Relief With Check
引導式抗衝洩載閥

2 SUBPLATE MOUNTING SIZE 稱呼口徑

02

3 ADJUSTMENT PRESSURE 壓力調整範圍

Check Spring Pressure 1.8bar 止逆閥彈簧壓力 1.8bar			Check Spring Pressure 0.3bar 止逆閥彈簧壓力 0.3bar		
Order 編號	Adjustment pressure 壓力調整範圍	Pilot ratio 引導比例	Order 編號	Adjustment pressure 壓力調整範圍	Pilot ratio 引導比例
10	25 ~ 105 (bar)	1.5:1	25	25 ~ 105 (bar)	1.5:1
28	70 ~ 280 (bar)	3:1	70	70 ~ 280 (bar)	3:1
17	70 ~ 175 (bar)	10:1	80	70 ~ 175 (bar)	10:1
35	140 ~ 350 (bar)	4.5:1	14	140 ~ 350 (bar)	4.5:1

4 PORTS DIMENSIONS 接口尺寸

A: 1/4 B: 3/8

5 THREADED TYPE 螺紋規格

1P : PT 3G : PF(G) 5B : BSP
2N : NPT 4A : SAE

6 PILOT RATIO 引導比例

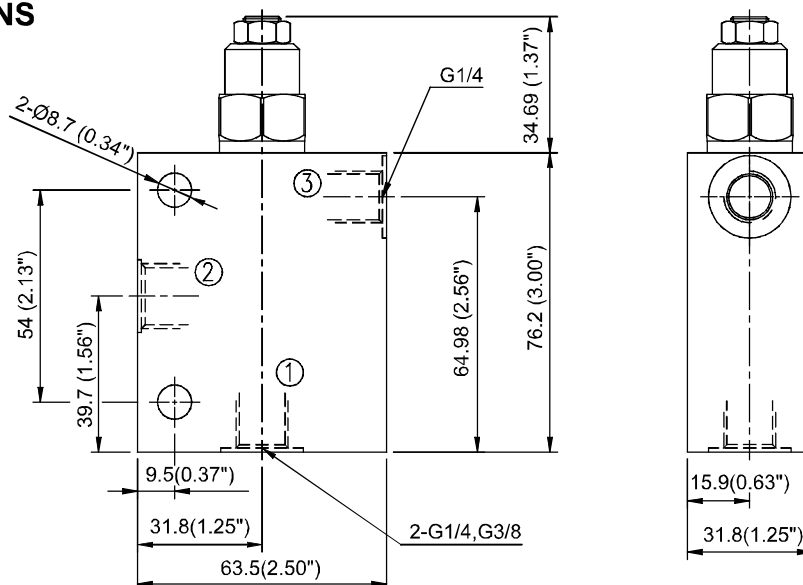
1.5A : 1.5:1 4A : 4.5:1
3A : 3:1 10A : 10:1

7 BODY MATERIAL 閥體材質

NONE (Standard); Aluminum-alloy
無 (標準): 鋁合金
D : Nodular Ductile-Iron 球墨鑄鐵
S : Steel 鋼質

◆ **DIMENSIONS**

外型尺寸圖

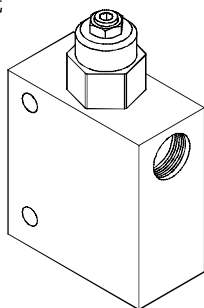


PRESSURE CONTROL VALVES 壓力控制閥

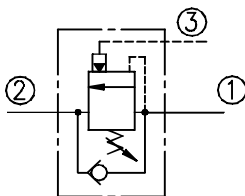
VCBD SERIES CARTRIDGE TYPE COUNTER BALANCE VALVES VCBD 系列插入式抗衡閥

MODEL 型式

VCBD-03



CONTROL PORT(S) 動作形式



Body Material 閥體材質	Maximum Pressure 最大壓力 bar	Weight 重量 Kg
Aluminum (standard) 鋁 (標準)	240 (3481 psi)	0.93 (2.14 lbs)
Nodular Ductile-Iron 球墨鑄鐵	350 (5076 psi)	2.10 (4.63 lbs)
Steel 鋼	350 (5076 psi)	2.10 (4.63 lbs)

SPECIFICATIONS 規格

Model Number 型式號碼	Maximum Pressure 最大壓力 bar	Adjustment Pressure 壓力調整範圍 bar	Maximum Flow 最大流量 lpm	Pilot Ratio 引導比例	Weight 重量 Kg
VCBD-03	350 (5076 psi)	* ~350	120 (31.70 gpm)	1.5:1 / 3:1 / 4.5:1 / 10:1	2.10 (4.63 lbs)
Fluid Type 流體型式			ISO VG 32, 46, 68		
Viscosity 黏性 cSt			10~400 (59~1854 SSU)		
Operating Temperature 操作溫度 °C			-15~70 (-5~158 °F)		
Contamination Level 污染標準			ISO4406, 21/19/16 NAS1638,10		

HOW TO ORDER 編號說明

1	2	3	4	5	6	7
VCBD	03	— 28	— *	— *	— *	— *

1 VALVE SERIES 系列名稱

VCBD= Overcentre Valves Pilot Assisted Relief With Check
引導式抗衡洩載閥

2 SUBPLATE MOUNTING SIZE 稱呼口徑

03

3 ADJUSTMENT PRESSURE 壓力調整範圍

Check Spring Pressure 1.8bar 止逆閥彈簧壓力 1.8bar			Check Spring Pressure 0.3bar 止逆閥彈簧壓力 0.3bar		
Order 編號	Adjustment pressure 壓力調整範圍	Pilot ratio 引導比例	Order 編號	Adjustment pressure 壓力調整範圍	Pilot ratio 引導比例
10	25 ~ 105 (bar)	1.5:1	25	25 ~ 105 (bar)	1.5:1
28	70 ~ 280 (bar)	3:1	70	70 ~ 280 (bar)	3:1
17	70 ~ 175 (bar)	10:1	80	70 ~ 175 (bar)	10:1
35	140 ~ 350 (bar)	4.5:1	14	140 ~ 350 (bar)	4.5:1

4 PORTS DIMENSIONS 接口尺寸

A: 3/8 B: 1/2

5 THREADED TYPE 螺紋規格

1P : PT 3G : PF(G) 5B : BSP
2N : NPT 4A : SAE

6 PILOT RATIO 引導比例

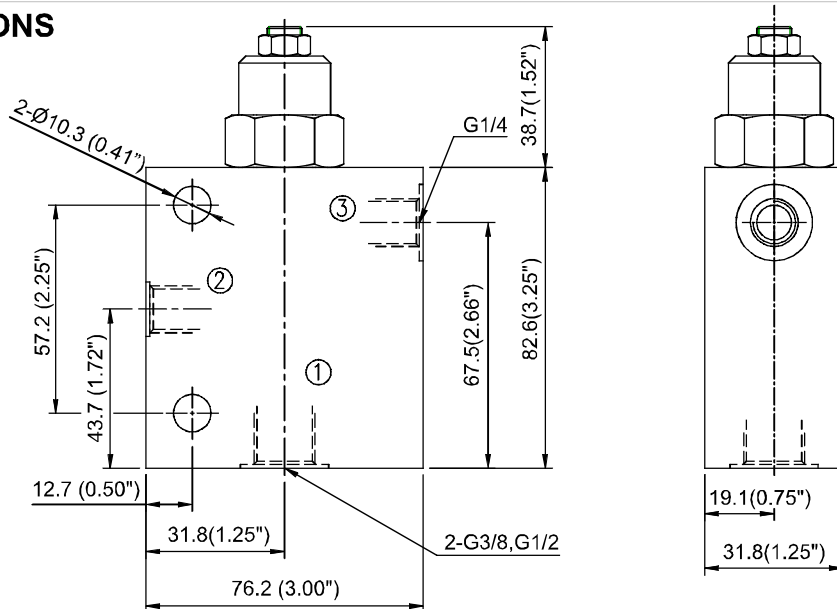
1.5A : 1.5:1 4A : 4.5:1
3A : 3:1 10A : 10:1

7 BODY MATERIAL 閥體材質

NONE (Standard): Aluminum-alloy
無 (標準): 鋁合金
D : Nodular Ductile-Iron 球墨鑄鐵
S : Steel 鋼質

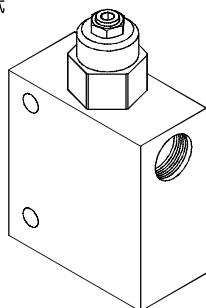
DIMENSIONS 外型尺寸圖

外型尺寸圖

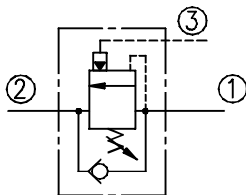


◆ **MODEL 型式**

VCBD-06



◆ **CONTROL PORT(S) 動作形式**



Body Material 閥體材質	Maximum Pressure 最大壓力 bar	Weight 重量 Kg
Aluminum (standard) 鋁 (標準)	240 (3481 psi)	2.37 (5.22 lbs)
Nodular Ductile-Iron 球墨鑄鐵	350 (5076 psi)	5.32 (11.73 lbs)
Steel 鋼	350 (5076 psi)	5.32 (11.73 lbs)

◆ **SPECIFICATIONS 規格**

Model Number 型式號碼	Maximum Pressure 最大壓力 bar	Adjustment Pressure 壓力調整範圍 bar	Maximum Flow 最大流量 lpm	Pilot Ratio 引導比例	Weight 重量 Kg
VCBD-06	350 (5076 psi)	* ~350	240 (63.40 gpm)	1.5:1 / 3:1 / 4.5:1 / 10:1	5.32 (11.73 lbs)
Fluid Type 流體型式			ISO VG 32, 46, 68		
Viscosity 黏性 cSt			10~400 (59~1854 SSU)		
Operating Temperature 操作溫度 °C			-15~70 (-5~158 °F)		
Contamination Level 污染標準			ISO4406. 21/19/16 NAS1638,10		

◆ **HOW TO ORDER 編號說明**



1 VALVE SERIES 系列名稱

VCBD= Overcentre Valves Pilot Assisted Relief With Check
引導式抗衝洩載閥

2 SUBPLATE MOUNTING SIZE 稱呼口徑

06

3 ADJUSTMENT PRESSURE 壓力調整範圍

Check Spring Pressure 1.8bar 止逆閥彈簧壓力 1.8bar			Check Spring Pressure 0.3bar 止逆閥彈簧壓力 0.3bar		
Order 編號	Adjustment pressure 壓力調整範圍	Pilot ratio 引導比例	Order 編號	Adjustment pressure 壓力調整範圍	Pilot ratio 引導比例
10	25 ~ 105 (bar)	1.5:1	25	25 ~ 105 (bar)	1.5:1
28	70 ~ 280 (bar)	3:1	70	70 ~ 280 (bar)	3:1
17	70 ~ 175 (bar)	10:1	80	70 ~ 175 (bar)	10:1
35	140 ~ 350 (bar)	4.5:1	14	140 ~ 350 (bar)	4.5:1

4 PORTS DIMENSIONS 接口尺寸

A: 3/4 B: 1

5 THREADED TYPE 螺紋規格

1P : PT 3G : PF(G) 5B : BSP
2N : NPT 4A : SAE

6 PILOT RATIO 引導比例

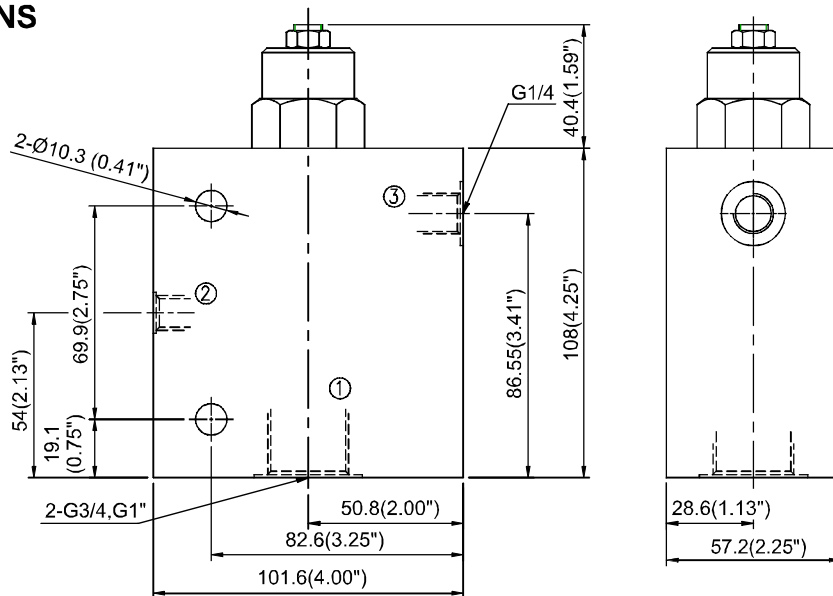
1.5A : 1.5:1 4A : 4.5:1
3A : 3:1 10A : 10:1

7 BODY MATERIAL 閥體材質

NONE (Standard): Aluminum-alloy
無 (標準): 鋁合金
D : Nodular Ductile-Iron 球墨鑄鐵
S : Steel 鋼質

◆ **DIMENSIONS**

外型尺寸圖

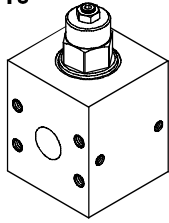


PRESSURE CONTROL VALVES 壓力控制閥

VCBD SERIES CARTRIDGE TYPE COUNTER BALANCE VALVES VCBD 系列插入式抗衡閥

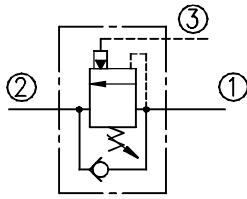
◆ MODEL 型式

VCBD-10



◆ CONTROL PORT(S) 動作形式

動作形式



Body Material 閥體材質	Maximum Pressure 最大壓力 bar	Weight 重量 Kg	
		Flange type 法蘭型	Threaded type 螺紋型
Aluminum (standard) 鋁 (標準)	240 (3481 psi)	5 (11.02 lbs)	4 (8.82 lbs)
Nodular Ductile-Iron 球墨鑄鐵	350 (5076 psi)	10 (22.05 lbs)	7.5 (16.53 lbs)
Steel 鋼	350 (5076 psi)	10 (22.05 lbs)	7.5 (16.53 lbs)

◆ SPECIFICATIONS 規格

Model Number 型式號碼	Maximum Pressure 最大壓力 bar	Adjustment Pressure 壓力調整範圍 bar	Maximum Flow 最大流量 lpm	Pilot Ratio 引導比例	Weight 重量 Kg
VCBD-10	350 (5076 psi)	* ~350	480 (126.80 gpm)	1.5:1 / 3:1 / 4.5:1 / 10:1	10 (22.05 lbs)
Fluid Type 流體型式			ISO VG 32, 46, 68		
Viscosity 黏性 cSt			10~400 (59~1854 SSU)		
Operating Temperature 操作溫度 °C			-15~70 (-5~158 °F)		
Contamination Level 污染標準			ISO4406. 21/19/16 NAS1638,10		

◆ HOW TO ORDER 編號說明

1	2	3	4	5	6	7
VCBD	10	—	28	—	A	—
					*	—
					*	—
					*	

1 VALVE SERIES 系列名稱

VCBD= Overcentre Valves Pilot Assisted Relief With Check
引導式抗衡洩載閥

2 SUBPLATE MOUNTING SIZE 稱呼口徑

10

3 ADJUSTMENT PRESSURE 壓力調整範圍

Check Spring Pressure 1.8bar 止逆閥彈簧壓力 1.8bar			Check Spring Pressure 0.3bar 止逆閥彈簧壓力 0.3bar		
Order 編號	Adjustment pressure 壓力調整範圍	Pilot ratio 引導比例	Order 編號	Adjustment pressure 壓力調整範圍	Pilot ratio 引導比例
10	25 ~ 105 (bar)	1.5:1	25	25 ~ 105 (bar)	1.5:1
28	70 ~ 280 (bar)	3:1	70	70 ~ 280 (bar)	3:1
17	70 ~ 175 (bar)	10:1	80	70 ~ 175 (bar)	10:1
35	140 ~ 350 (bar)	4.5:1	14	140 ~ 350 (bar)	4.5:1

4 PORTS DIMENSIONS 接口尺寸

A : 1 1/2" (Flange type port, Dimensions of flange please contact with us.)
(此為法蘭型接口, 法蘭尺寸請與我們聯絡)

B : 1 1/4" (Threaded type only) (僅限螺紋型)

5 PORTS CONNECTING TYPE 接口連接型式

-Flange type 法蘭型

NONE (Standard) : Flange type 無(標準) : 法蘭型

-Threaded type 螺紋型

1P : PT 3G : PF(G) 5B : BSP

2N : NPT 4A : SAE

6 PILOT RATIO 引導比例

1.5A : 1.5:1 4A : 4.5:1

3A : 3:1 10A : 10:1

7 BODY MATERIAL 閥體材質

NONE (Standard) : Aluminum-alloy
無(標準) : 鋁合金

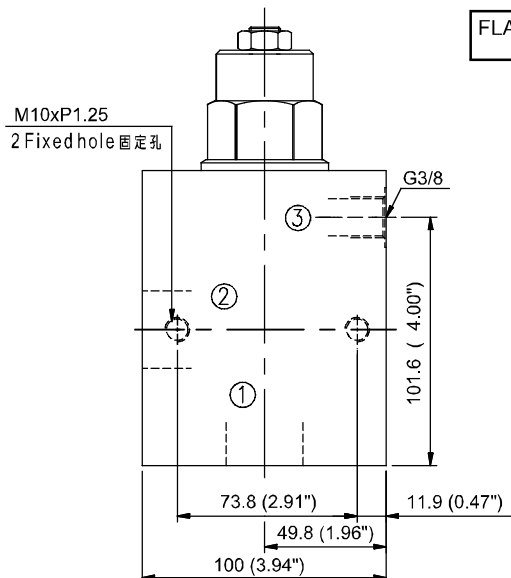
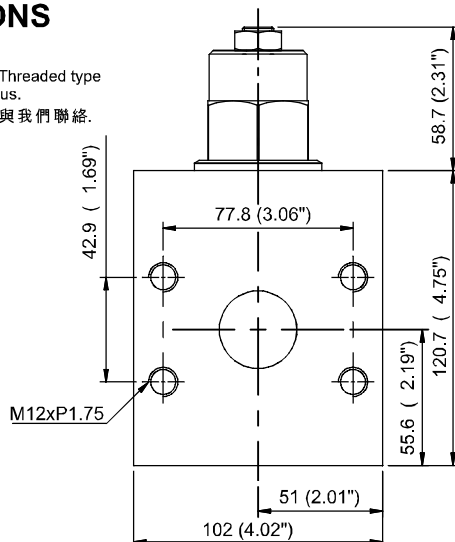
D : Nodular Ductile-Iron 球墨鑄鐵

S : Steel 鋼質

◆ DIMENSIONS 外型尺寸圖

外型尺寸圖

Note: Dimensions of Threaded type
Please contact us.
螺紋型尺寸請與我們聯絡。



FLANGE TYPE
法蘭型