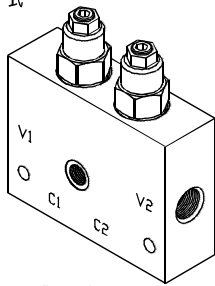


◆ **MODEL** 型式  
**VCBE-02**



◆ **DESCRIPTION** 說明

When the motor is in a stationary, unpowered mode, this assembly will prevent excessive drift in either direction of rotation. It will also prevent motor over speed when exposed to an overrunning load, and will control motor deceleration to a stop.  
A shuttle within the assembly provides a pilot to release a parking or holding brake as Either motor port is pressurized. Typical applications are swing drives, winch drives, and Vehicle propulsion circuits. If the shuttle is not required the "barke" port may be plugged.  
當汽車靜止,無動力模式時,這個安裝會預防任何一方的方向旋轉、漂移;當汽車暴露於超載時,速度過快並控制汽車減速至停止。  
梭動閥組裝提供駕駛解除停車或保有剎車,任一汽車汽門感受到有壓力時,特別適用在搖擺車駕駛、絞盤車駕駛,車輛推進迴路,若未配有梭動閥,剎車口可能被阻塞。

◆ **SPECIFICATIONS** 規格

Model Number 型式號碼	Maximum Pressure 最大壓力 bar	Pilot Ratio 引導比例	Adjustment Pressure 壓力調整範圍 bar	Maximum Flow 最大流量 Lpm	Weight 重量 Kg
VCBE-02	350 (5076 psi)	1.5:1 / 3:1 / 4.5:1 / 10:1	* ~ 350	60 (15.85 gpm)	2.2 (4.85 lbs)
Fluid Type 流體型式			ISO VG 32,46,68		
Viscosity 黏性 cSt			10~400 (59~1854SSU)		
Operating Temperature 操作溫度 °C			-15~70 (-5~158°F)		
Contamination Level 污染標準			ISO4406. 21/19/16 NAS1638,10		

◆ **HOW TO ORDER** 編號說明

<b>1</b>	<b>2</b>	<b>3</b>	<b>4</b>	<b>5</b>	<b>6</b>	<b>7</b>
VCBE	02	— 10 —	A —	1P —	* —	* —

**1 VALVE SERIES** 系列名稱  
VCBE= DUAL COUNTERBALANCE VALVE ASSEMBLY WITH BRAKE RELEASE SHUTTLE  
雙抗衡閥附剎車釋放梭動閥

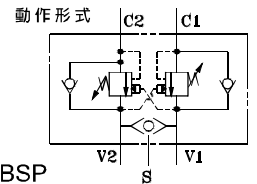
**2 SUBPLATE MOUNTING SIZE** 稱呼口徑  
02

**3 ADJUSTMENT PRESSURE** 壓力調整範圍

Check Spring Pressure 1.8bar 止逆閥彈簧壓力 1.8bar			Check Spring Pressure 0.3bar 止逆閥彈簧壓力 0.3bar		
Order 編號	Adjustment pressure 壓力調整範圍	Pilot ratio 引導比例	Order 編號	Adjustment pressure 壓力調整範圍	Pilot ratio 引導比例
10	25 ~ 105 (bar)	1.5:1	25	25 ~ 105 (bar)	1.5:1
28	70 ~ 280 (bar)	3:1	70	70 ~ 280 (bar)	3:1
17	70 ~ 175 (bar)	10:1	80	70 ~ 175 (bar)	10:1
35	140 ~ 350 (bar)	4.5:1	14	140 ~ 350 (bar)	4.5:1

**4 PORTS DIMENSIONS** 接口尺寸  
A: 3/8 B: 1/2

◆ **CONTROL PORT(S)**



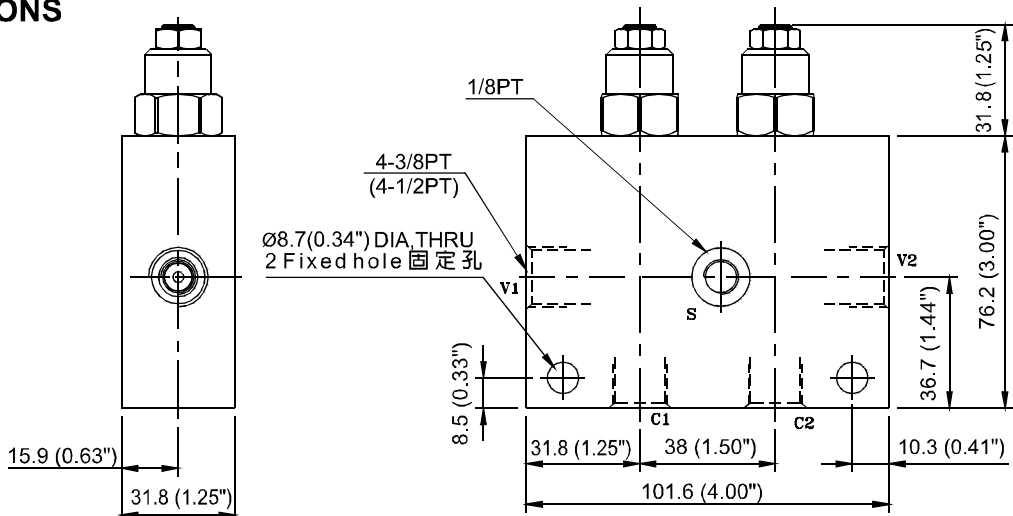
**5 THREADED TYPE** 螺紋規格  
1P : PT 3G : PF(G) 5B : BSP  
2N : NPT 4A : SAE

**6 PILOT RATIO** 引導比例  
1.5A : 1.5:1 4A : 4.5:1  
3A : 3:1 10A : 10:1

**7 BODY MATERIAL** 閥體材質  
NONE (Standard): Aluminum-alloy  
無 (標準): 鋁合金  
D : Nodular Ductile-Iron 球墨鑄鐵  
S : Steel 鋼質

Body Material 閥體材質	Maximum Pressure 最大壓力 bar	Weight 重量 Kg
Aluminum (standard) 鋁 (標準)	240 (3481 psi)	1.09 (2.40 lbs)
Nodular Ductile-Iron 球墨鑄鐵	350 (5076 psi)	2.2 (4.85 lbs)
Steel 鋼	350 (5076 psi)	2.2 (4.85 lbs)

◆ **DIMENSIONS**  
外型尺寸圖

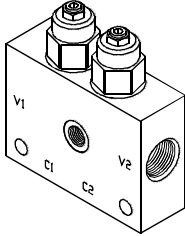


# PRESSURE CONTROL VALVES 壓力控制閥

## VCBE SERIES DUAL COUNTERBALANCE VALVE ASSEMBLY WITH BRAKE RELEASE SHUTTLE VCBE 系列雙抗衝閥附剎車釋放梭動閥

### MODEL 型式

VCBE-03



### DESCRIPTION 說明

When the motor is in a stationary, unpowered mode, this assembly will prevent excessive drift in either direction of rotation. It will also prevent motor over speed when exposed to an overrunning load, and will control motor deceleration to a stop.

A shuttle within the assembly provides a pilot to release a parking or holding brake as either motor port is pressurized. Typical applications are swing drives, winch drives, and Vehicle propulsion circuits. If the shuttle is not required the "brake" port may be plugged. 當汽車靜止,無動力模式時,這個安裝會預防任何一方的方向旋轉、漂移;當汽車暴露於超載時,速度過快並控制汽車減速至停止。

梭動閥組裝提供駕駛解除停車或保有剎車,任一汽車汽門感受到有壓力時,特別適用在搖擺車駕駛、絞盤車駕駛,車輛推進迴路,若未配有梭動閥,剎車口可能被阻塞。

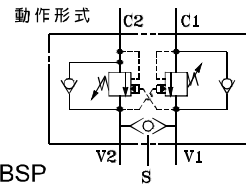
### SPECIFICATIONS 規格

Model Number 型式號碼	Maximum Pressure 最大壓力 bar	Pilot Ratio 引導比例	Adjustment Pressure 壓力調整範圍 bar	Maximum Flow 最大流量 Lpm	Weight 重量 Kg
VCBE-03	350 (5076 psi)	1.5:1 / 3:1 / 4.5:1 / 10:1	* ~ 350	120 (31.70 gpm)	3 (6.61 lbs)
Fluid Type 流體型式			ISO VG 32,46,68		
Viscosity 黏性 cSt			10~400 (59~1854SSU)		
Operating Temperature 操作溫度 °C			-15~70 (-5~158°F)		
Contamination Level 污染標準			ISO4406. 21/19/16 NAS1638,10		

### HOW TO ORDER 編號說明

1	2	3	4	5	6	7
VCBE	03	—	10	—	A	—
					1P	—
					*	—
					*	

### CONTROL PORT(S) 動作形式



#### 1 VALVE SERIES 系列名稱

VCBE= DUAL COUNTERBALANCE VALVE ASSEMBLY WITH BRAKE RELEASE SHUTTLE  
雙抗衝閥附剎車釋放梭動閥

#### 2 SUBPLATE MOUNTING SIZE 稱呼口徑

03

#### 3 ADJUSTMENT PRESSURE 壓力調整範圍

Check Spring Pressure 1.8bar 止逆閥彈簧壓力 1.8bar			Check Spring Pressure 0.3bar 止逆閥彈簧壓力 0.3bar		
Order 編號	Adjustment pressure 壓力調整範圍	Pilot ratio 引導比例	Order 編號	Adjustment pressure 壓力調整範圍	Pilot ratio 引導比例
10	25 ~ 105 (bar)	1.5:1	25	25 ~ 105 (bar)	1.5:1
28	70 ~ 280 (bar)	3:1	70	70 ~ 280 (bar)	3:1
17	70 ~ 175 (bar)	10:1	80	70 ~ 175 (bar)	10:1
35	140 ~ 350 (bar)	4.5:1	14	140 ~ 350 (bar)	4.5:1

#### 5 THREADED TYPE 螺紋規格

1P : PT 3G : PF(G) 5B : BSP  
2N : NPT 4A : SAE

#### 6 PILOT RATIO 引導比例

1.5A : 1.5:1 4A : 4.5:1  
3A : 3:1 10A : 10:1

#### 7 BODY MATERIAL 閥體材質

NONE (Standard): Aluminum-alloy  
無 (標準): 鋁合金

D : Nodular Ductile-Iron 球墨鑄鐵  
S : Steel 鋼質



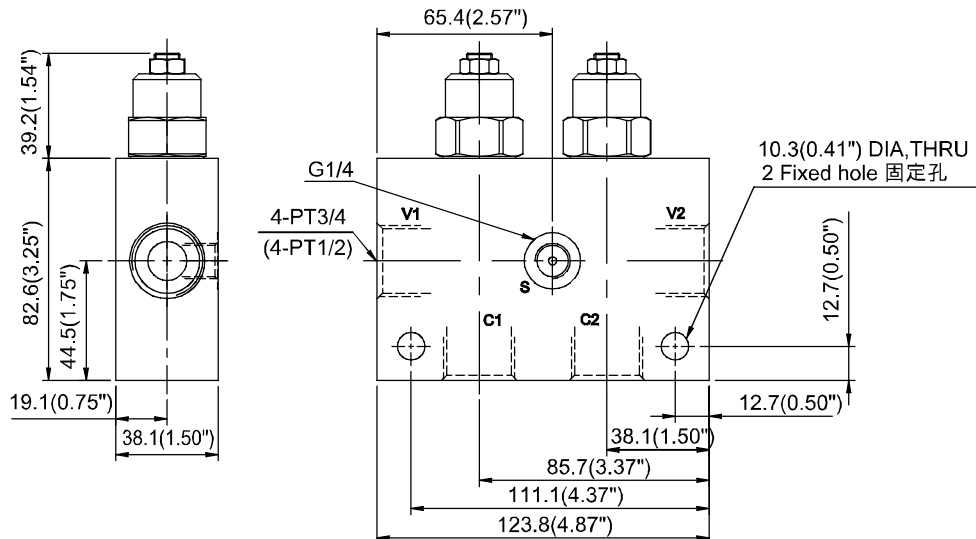
Body Material 閥體材質	Maximum Pressure 最大壓力 bar	Weight 重量 Kg
Aluminum (standard) 鋁 (標準)	240 (3481 psi)	1.7 (3.75 lbs)
Nodular Ductile-Iron 球墨鑄鐵	350 (5076 psi)	3.2 (7.05 lbs)
Steel 鋼	350 (5076 psi)	3.2 (7.05 lbs)

#### 4 PORTS DIMENSIONS 接口尺寸

A: 3/4 B: 1/2

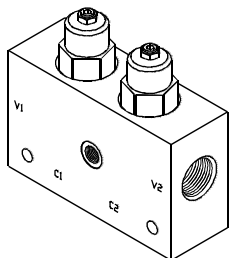
### DIMENSIONS 外型尺寸圖

外型尺寸圖



◆ **MODEL 型 式**

VCBE-06



◆ **DESCRIPTION 說明**

When the motor is in a stationary, unpowered mode, this assembly will prevent excessive drift in either direction of rotation. It will also prevent motor over speed when exposed to an overrunning load, and will control motor deceleration to a stop.

A shuttle within the assembly provides a pilot to release a parking or holding brake as Either motor port is pressurized. Typical applications are swing drives, winch drives, and Vehicle propulsion circuits. If the shuttle is not required the "brake" port may be plugged.

當汽車靜止,無動力模式時,這個安裝會預防任何一方的方向旋轉、漂移;當汽車暴露於超載時,速度過快並控制汽車減速至停止。  
梭動閥組裝提供駕駛解除停車或保有剎車,任一汽車汽門感受到有壓力時,特別適用在搖擺車駕駛、絞盤車駕駛,車輛推進迴路,若未配有梭動閥,剎車口可能被阻塞。

◆ **SPECIFICATIONS 規 格**

Model Number 型式號碼	Maximum Pressure 最大壓力 bar	Pilot Ratio 引導比例	Adjustment Pressure 壓力調整範圍 bar	Maximum Flow 最大流量 Lpm	Weight 重量 Kg
VCBE-06	350 (5076 psi)	1.5:1 / 3:1 / 4.5:1 / 10:1	* ~ 350	240 (63.40 gpm)	7.3 (16.09 lbs)
Fluid Type 流體型式			ISO VG 32,46,68		
Viscosity 黏性 cSt			10~400 (59~1854SSU)		
Operating Temperature 操作溫度 °C			-15~70 (-5~158°F)		
Contamination Level 污染標準			ISO4406. 21/19/16 NAS1638,10		

◆ **HOW TO ORDER 編號說明**

<b>1</b>	<b>2</b>	<b>3</b>	<b>4</b>	<b>5</b>	<b>6</b>	<b>7</b>
VCBE	06	— 10 —	A	— 1P —	*	— *

**1 VALVE SERIES 系列名稱**

VCBE= DUAL COUNTERBALANCE VALVE ASSEMBLY WITH BRAKE RELEASE SHUTTLE  
雙抗衡閥附剎車釋放梭動閥

**2 SUBPLATE MOUNTING SIZE 稱呼口徑**

06

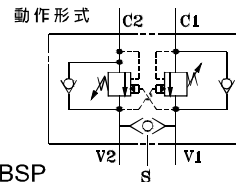
**3 ADJUSTMENT PRESSURE 壓力調整範圍**

Check Spring Pressure 1.8bar 止逆閥彈簧壓力 1.8bar			Check Spring Pressure 0.3bar 止逆閥彈簧壓力 0.3bar		
Order 編號	Adjustment pressure 壓力調整範圍	Pilot ratio 引導比例	Order 編號	Adjustment pressure 壓力調整範圍	Pilot ratio 引導比例
10	25 ~ 105 (bar)	1.5:1	25	25 ~ 105 (bar)	1.5:1
28	70 ~ 280 (bar)	3:1	70	70 ~ 280 (bar)	3:1
17	70 ~ 175 (bar)	10:1	80	70 ~ 175 (bar)	10:1
35	140 ~ 350 (bar)	4.5:1	14	140 ~ 350 (bar)	4.5:1

**4 PORTS DIMENSIONS 接口尺寸**

A: 1 B: 3/4

◆ **CONTROL PORT(S) 動作形式**



**5 THREADED TYPE 螺紋規格**

1P : PT 3G : PF(G) 5B : BSP  
2N : NPT 4A : SAE

**6 PILOT RATIO 引導比例**

1.5A : 1.5:1 4A : 4.5:1  
3A : 3:1 10A : 10:1

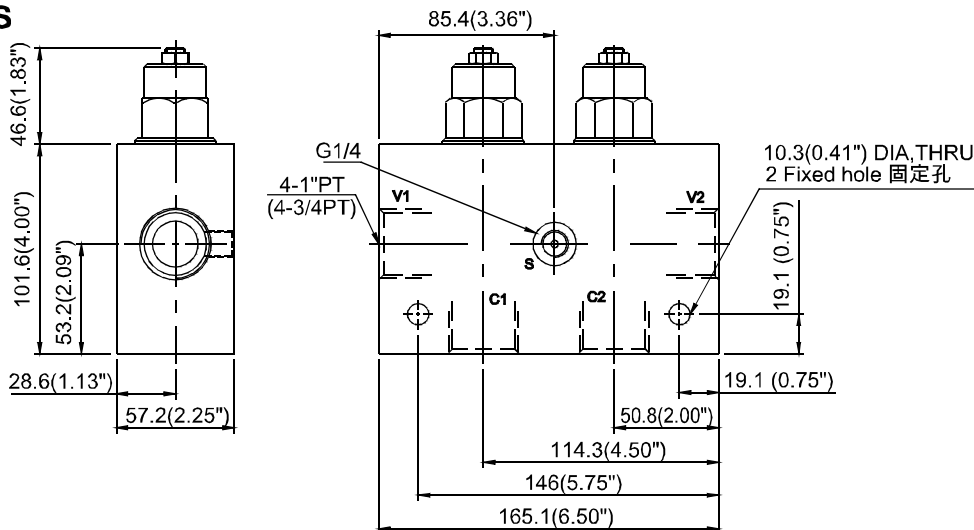
**7 BODY MATERIAL 閥體材質**

NONE (Standard): Aluminum-alloy  
無 (標準): 鋁合金  
D : Nodular Ductile-Iron 球墨鑄鐵  
S : Steel 鋼質

Body Material 閥體材質	Maximum Pressure 最大壓力 bar	Weight 重量 Kg
Aluminum (standard) 鋁 (標準)	240 (3481 psi)	3.91 (8.62 lbs)
Nodular Ductile-Iron 球墨鑄鐵	350 (5076 psi)	7.3 (16.09 lbs)
Steel 鋼	350 (5076 psi)	7.3 (16.09 lbs)

◆ **DIMENSIONS 外型尺寸圖**

外型尺寸圖

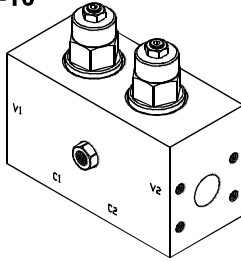


# PRESSURE CONTROL VALVES 壓力控制閥

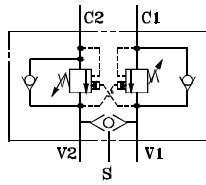
## VCBE SERIES DUAL COUNTERBALANCE VALVE ASSEMBLY WITH BRAKE RELEASE SHUTTLE VCBE 系列雙抗衝閥附剎車釋放梭動閥

### MODEL 型式

VCBE-10



### CONTROL PORT(S) 動作形式



### DESCRIPTION 說明

When the motor is in a stationary, unpowered mode, this assembly will prevent excessive drift in either direction of rotation. It will also prevent motor over speed when exposed to an overrunning load, and will control motor deceleration to a stop. A shuttle within the assembly provides a pilot to release a parking or holding brake as Either motor port is pressurized. Typical applications are swing drives, winch drives, and Vehicle propulsion circuits. If the shuttle is not required the "brake" port may be plugged.

當汽車靜止,無動力模式時,這個安裝會預防任何一方的方向旋轉、漂移;當汽車暴露於超載時,速度過快並控制汽車減速至停止。梭動閥組裝提供架駛解除停車或保有剎車,任一汽車汽門感受到有壓力時,特別適用在搖擺車駕駛、絞盤車駕駛,車輛推進迴路,若未配有梭動閥,剎車口可能被阻塞。

### SPECIFICATIONS 規格

Model Number 型式號碼	Maximum Pressure 最大壓力 bar	Pilot Ratio 引導比例	Adjustment Pressure 壓力調整範圍 bar	Maximum Flow 最大流量 Lpm	Weight 重量 Kg
VCBE-10	350 (5076 psi)	1.5:1 / 3:1 / 4.5:1 / 10:1	* ~ 350	480 (126.80 gpm)	20 (44.09 lbs)
Fluid Type 流體型式			ISO VG 32,46,68		
Viscosity 黏性 cSt			10~400 (59~1854SSU)		
Operating Temperature 操作溫度 °C			-15~70 (-5~158°F)		
Contamination Level 污染標準			ISO4406. 21/19/16 NAS1638,10		

### HOW TO ORDER 編號說明

1	2	3	4	5	6	7
VCBE	10	10	A	1P	*	*

**1 VALVE SERIES 系列名稱**  
VCBE= DUAL COUNTERBALANCE VALVE ASSEMBLY WITH BRAKE RELEASE SHUTTLE  
雙抗衝閥附剎車釋放梭動閥

**2 SUBPLATE MOUNTING SIZE 稱呼口徑**  
10

**3 ADJUSTMENT PRESSURE 壓力調整範圍**

Check Spring Pressure 1.8bar 止逆閥彈簧壓力 1.8bar			Check Spring Pressure 0.3bar 止逆閥彈簧壓力 0.3bar		
Order 編號	Adjustment pressure 壓力調整範圍	Pilot ratio 引導比例	Order 編號	Adjustment pressure 壓力調整範圍	Pilot ratio 引導比例
10	25 ~ 105 (bar)	1.5:1	25	25 ~ 105 (bar)	1.5:1
28	70 ~ 280 (bar)	3:1	70	70 ~ 280 (bar)	3:1
17	70 ~ 175 (bar)	10:1	80	70 ~ 175 (bar)	10:1
35	140 ~ 350 (bar)	4.5:1	14	140 ~ 350 (bar)	4.5:1

**4 PORTS DIMENSIONS 接口尺寸**

A : 1 1/2" (Flange type port, Dimensions of flange please contact with us.)  
(此為法蘭型接口,法蘭尺寸請與我們聯絡)

B : 1 1/4" (Threaded type only) (僅限螺紋型)

**5 PORTS CONNECTING TYPE 接口連接型式**

-Flange type 法蘭型  
NONE (Standard): Flange type 無(標準): 法蘭型  
-Threaded type 螺紋型  
1P: PT 3G: PF(G) 5B: BSP  
2N: NPT 4A: SAE

**6 PILOT RATIO 引導比例**

1.5A : 1.5:1 4A : 4.5:1  
3A : 3:1 10A : 10:1

**7 BODY MATERIAL 閥體材質**

NONE (Standard): Aluminum-alloy  
無(標準): 鋁合金  
D: Nodular Ductile-Iron 球墨鑄鐵  
S: Steel 鋼質

Body Material 閥體材質	Maximum Pressure 最大壓力 bar	Weight 重量 Kg	
		Flange type 法蘭型	Threaded type 螺紋型
Aluminum (standard) 鋁(標準)	240 (3481 psi)	10 (22.05 lbs)	9 (19.84 lbs)
Nodular Ductile-Iron 球墨鑄鐵	350 (5076 psi)	20 (44.09 lbs)	16 (35.27 lbs)
Steel 鋼	350 (5076 psi)	20 (44.09 lbs)	16 (35.27 lbs)

### DIMENSIONS 外型尺寸圖

Note: Dimensions of Threaded type  
Please contact us.  
螺紋型尺寸請與我們聯絡。

