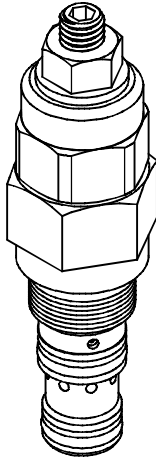
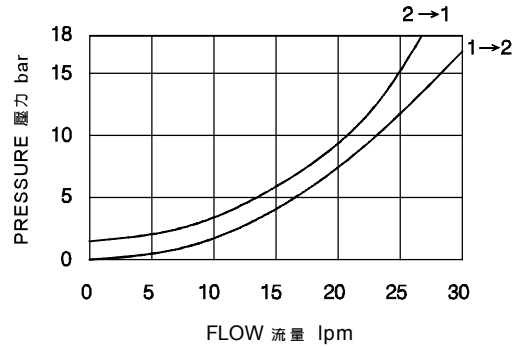


◆ **MODEL 型 式**
VCQ-08



◆ **PERFORMANCE(Cartridge Only)**
特性曲線



◆ **SPECIFICATIONS 規 格**

Model Number 型式號碼	Maximum Pressure 最大壓力 bar	Pilot Ratio 引導比例	Adjustment Pressure 壓力調整範圍 bar	Maximum Flow 最大流量 Lpm	Weight 重量 Kg
VCQ-08	350 (5076 psi)	4:1	* ~ 350	30 (7.93 gpm)	0.19 (0.42 lbs)
Fluid Type 流體型式			ISO VG 32,46,68		
Viscosity 黏性 cSt			10~400 (59~1854SSU)		
Operating Temperature 操作溫度 °C			-30~100 (-22~212°F)		
Contamination Level 污染標準			ISO4406. 21/19/16 NAS1638,10		

◆ **HOW TO ORDER 編號說明**

1	2	3	4	5
VCQ	08	— 20 —	* —	4A

1 VALVE SERIES 系列名稱

VCQ= Cartridge Type Counter Balance Valves
插入式抗衡閥

2 SUBPLATE MOUNTING SIZE 稱呼口徑

Size:08
Cavity 孔口:CS08-3S
See Page Appendixes-A_003
見附錄A_003 頁面

3 ADJUSTMENT PRESSURE 壓力調整範圍

Pilot ratio 引導比例	Code 編碼	Adjustment pressure 壓力調整範圍
4:1	20	100 ~ 210 (bar)
	35	200 ~ 350 (bar)

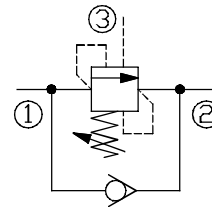
4 ADJUSTMENT OPTION 調整選擇

NONE: TOOL ADJUST 無 : 工具調整式

5 PILOT RATIO 引導比例

4A : 4:1

◆ **CONTROL PORT(S) 動作形式**



◆ **DIMENSIONS 外型尺寸圖**

