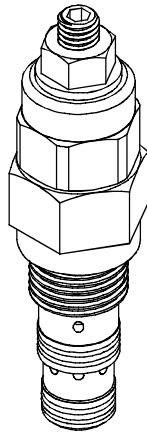


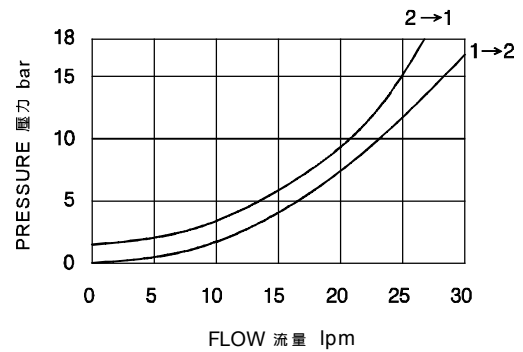
### ◆ MODEL 型 式

VCQ-08N



### ◆ PERFORMANCE (Cartridge Only)

特性曲線



### ◆ SPECIFICATIONS 規 格

Model Number 型式號碼	Maximum Pressure 最大壓力 bar	Pilot Ratio 引導比例	Adjustment Pressure 壓力調整範圍 bar	Maximum Flow 最大流量 Lpm	Weight 重量 Kg
VCQ-08N	350 (5076 psi)	4:1	* ~ 350	30 (7.93 gpm)	0.19 (0.42 lbs)
<b>Fluid Type</b> 流體型式			ISO VG 32,46,68		
<b>Viscosity</b> 黏性 cSt			10~400 (59~1854SSU)		
<b>Operating Temperature</b> 操作溫度 °C			-30~100 (-22~212°F)		
<b>Contamination Level</b> 污染標準			ISO4406. 21/19/16 NAS1638,10		

### ◆ HOW TO ORDER 編號說明

<b>1</b>	<b>2</b>	<b>3</b>	<b>4</b>	<b>5</b>
VCQ	08N	— 20 —	* —	4A

#### 1 VALVE SERIES 系列名稱

VCQ= Cartridge Type Counter Balance Valves  
插入式抗衡閥

#### 2 SUBPLATE MOUNTING SIZE 稱呼口徑

Size:08  
Cavity 孔口:CS08-3N  
See Page Appendixes-A\_002  
見附錄A\_002 頁面

#### 3 ADJUSTMENT PRESSURE 壓力調整範圍

Pilot ratio 引導比例	Code 編碼	Adjustment pressure 壓力調整範圍
4:1	20	100 ~ 210 (bar)
	35	200 ~ 350 (bar)

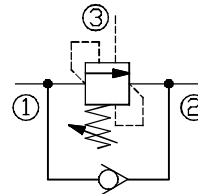
#### 4 ADJUSTMENT OPTION 調整選擇

NONE: TOOL ADJUST 無: 工具調整式

#### 5 PILOT RATIO 引導比例

4A: 4:1

### ◆ CONTROL PORT(S) 動作形式



### ◆ DIMENSIONS 外型尺寸圖

