

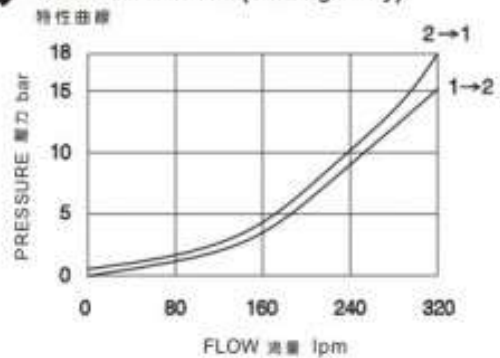
PRESSURE CONTROL VALVES 壓力控制閥

VCQ SERIES CARTRIDGE TYPE COUNTER BALANCE VALVES vcq 系列插入式抗衝擊

◆ MODEL 型 式 VCQ-20U



◆ PERFORMANCE (Cartridge Only)



◆ SPECIFICATIONS 規 格

| Model Number 型式號碼 | Maximum Pressure 最大壓力 bar | Pilot Ratio 引導比例 | Adjustment Pressure 壓力調整範圍 bar | Maximum Flow 最大流量 Lpm | Weight 重量 Kg |
|-------------------------------|------------------------------|---------------------|-----------------------------------|--------------------------|-----------------|
| VCQ-20U | 420 (6092 psi) | 4:1 / 8:1 | * ~ 420 | 320 (84.54 gpm) | 0.91 (2.01 lbs) |
| Fluid Type 液體型式 | | | ISO VG 32,46,68 | | |
| Viscosity 黏性 cSt | | | 10~400 (59~1854SSU) | | |
| Operating Temperature 操作溫度 °C | | | -15~70 (-5~158°F) | | |
| Contamination Level 污染標準 | | | ISO4406. 21/19/16 NAS1638,10 | | |

◆ HOW TO ORDER 編號說明

| 1 | 2 | 3 | 4 | 5 |
|-----|-----|----|---|----|
| VCQ | 20U | 35 | * | 4A |

1 VALVE SERIES 系列名稱

VCQ = Cartridge Type Counter Balance Valves
插入式抗衝擊

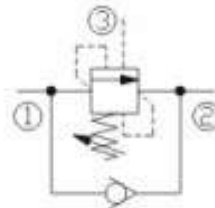
2 SUBPLATE MOUNTING SIZE 稱呼口徑

Size: 20U
Cavity 孔口: A6935

3 ADJUSTMENT PRESSURE 壓力調整範圍

| Pilot ratio 引導比例 | Order 編號 | Adjustment pressure 壓力調整範圍 |
|---------------------|-------------|-------------------------------|
| 4:1 | 20 | 70 - 210 (bar) |
| | 35 | 140 - 350 (bar) |
| 8:1 | 40 | 140 - 420 (bar) |

◆ CONTROL PORT(S) 動作形式



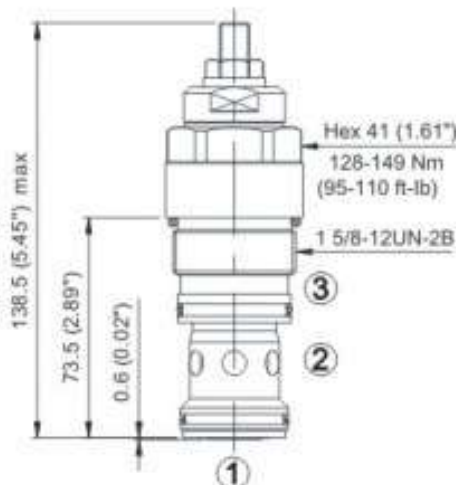
4 ADJUSTMENT OPTION 調整選擇

NONE: TOOL ADJUST 無 · 工具調整式

5 PILOT RATIO 引導比例

4A: 4:1
8A: 8:1

◆ DIMENSIONS 外型尺寸圖



A6935

