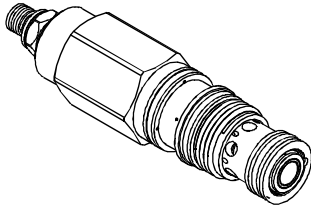


◆ MODEL 型式

VHC-02

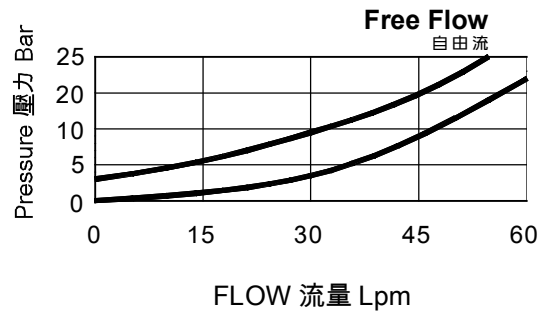


◆ DESCRIPTION 說明

Direct-acting sequence valves with reverse-flow check will supply a secondary circuit with flow once the pressure at the port 1 (inlet) has exceeded the valve setting. Additionally, these valves incorporate an integral check valve to provide reverse flow from port 2 (sequence) to port 1 (inlet). It will be connected to tank no matter the oil through by port 3 or not.

直動式帶逆流單向閥的順序閥將在口1(進口)壓力超過閥的設定之後向次級油路供油。此外，此類閥內部集成單向閥，可以提供從口2(順序口)到口1(進口)逆向液流。口3不管有沒有油都要接到油箱。

◆ PERFORMANCE 特性曲線



◆ SPECIFICATIONS 規格

Model Number 型式號碼	Maximum Pressure 最大壓力 bar	Maximum Flow 最大流量 lpm	Free Flow check cracking pressure 止逆閥開啓壓力 bar	Weight 重量 Kg
VHC-02	350 (5076 psi)	60 (15.85 gpm)	2.8 (40.61 psi)	0.22 (0.48 lbs)
Fluid Type 流體型式			ISO VG 32, 46, 68	
Viscosity 黏性 cSt			10~400 (59~1854 SSU)	
Operating Temperature 操作溫度 °C			-30~100 (-22~212°F)	
Contamination Level 污染標準			ISO4406. 21/19/16 NAS1638,10	

◆ HOW TO ORDER 編號說明

1	2	3	4	5
VHC	02	*	*	*

1 VALVE SERIES 系列名稱

VHC= Cartridge Direct Acting Type
Check Sequence Valve
插入式直動型止逆順序閥

2 SUBPLATE MOUNTING SIZE: 稱呼口徑

02: T-11A
Cavity 孔口: CST-11A
See Page Appendixes-A_006
見附錄A_006 頁面

3 ADJUSTMENT PRESSURE 壓力調整範圍

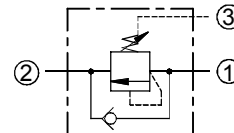
Code 編碼	Adjustment pressure 壓力調整範圍
02	07 ~ 28 (bar)
05	14 ~ 55 (bar)
10	20 ~ 105 (bar)
20	35 ~ 210 (bar)
30	55 ~ 315 (bar)
40	140 ~ 420 (bar)

4 ADJUSTMENT OPTION 調整選擇

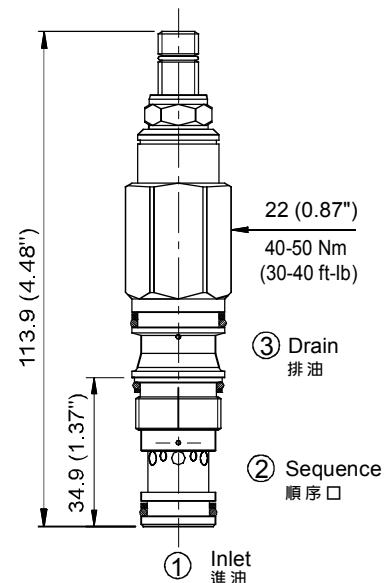
NONE	NONE: TOOL ADJUST 無：工具調整式	
C	C: TAMPER RESISTANT COVER C：防調封蓋	
K	K: HAND-BAR ADJUST K：手把調整式	

5 DESIGN NO 設計編號

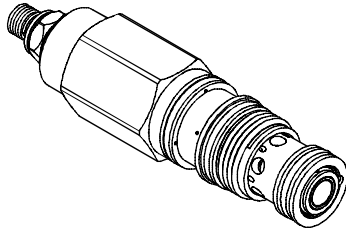
◆ CONTROL PORT(S) 動作形式



◆ DIMENSIONS 外型尺寸圖



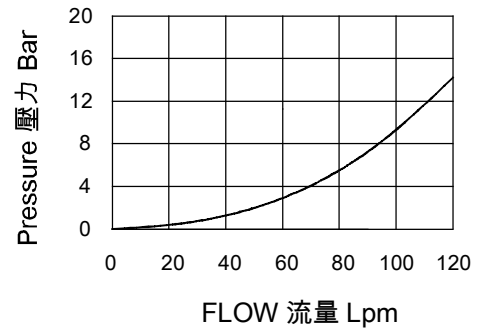
◆ **MODEL 型 式**
VHC-03



◆ **DESCRIPTION 說明**

Direct-acting sequence valves with reverse-flow check will supply a secondary circuit with flow once the pressure at the port 1 (inlet) has exceeded the valve setting. Additionally, these valves incorporate an integral check valve to provide reverse flow from port 2 (sequence) to port 1 (inlet). It will be connected to tank no matter the oil through by port 3 or not.
直動式帶逆流單向閥的順序閥將在口1(進口)壓力超過閥的設定之後向次級油路供油。此外，此類閥內部集成單向閥，可以提供從口2(順序口)到口1(進口)逆向液流。口3不管有沒有油都要接到油箱。

◆ **PERFORMANCE 特性曲線**



◆ **SPECIFICATIONS 規 格**

Model Number 型式號碼	Maximum Pressure 最大壓力 bar	Maximum Flow 最大流量 lpm	Free Flow check cracking pressure 止逆閥開啓壓力 bar	Weight 重量 Kg
VHC-03	350 (5076 psi)	120 (31.7 gpm)	2.8 (40.61 psi)	0.4 (0.88 lbs)
Fluid Type 流體型式			ISO VG 32, 46, 68	
Viscosity 黏性 cSt			10~400 (59~1854 SSU)	
Operating Temperature 操作溫度 °C			-30~100 (-22~212°F)	
Contamination Level 污染標準			ISO4406. 21/19/16 NAS1638,10	

◆ **HOW TO ORDER 編號說明**

1	2	3	4	5
VHC	03	— *	— *	— *

1 VALVE SERIES 系列名稱
VHC= Cartridge Direct Acting Type Check Sequence Valve
插入式直動型止逆順序閥

2 SUBPLATE MOUNTING SIZE 稱呼口徑

03: T-2A
Cavity 孔口: CST-2A
See Page Appendixes-A_006
見附錄A_006 頁面

3 ADJUSTMENT PRESSURE 壓力調整範圍

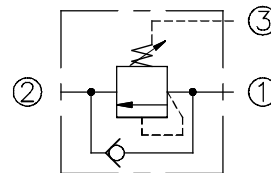
Code 編碼	Adjustment pressure 壓力調整範圍
05	14 ~ 55 (bar)
10	20 ~ 105 (bar)
20	35 ~ 210 (bar)
30	55 ~ 315 (bar)
40	140 ~ 420 (bar)

4 ADJUSTMENT OPTION 調整選擇

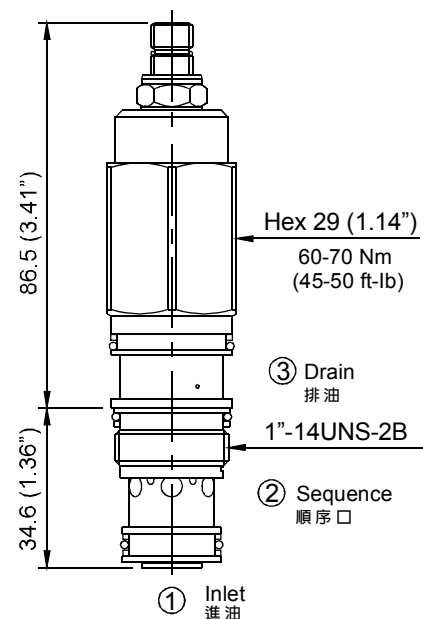
NONE	NONE: TOOL ADJUST 無：工具調整式	
C	C: TAMPER RESISTANT COVER C：防調封蓋	
K	K: HAND-BAR ADJUST K：手把調整式	

5 DESIGN NO 設計編號

◆ **CONTROL PORT(S) 動作形式**

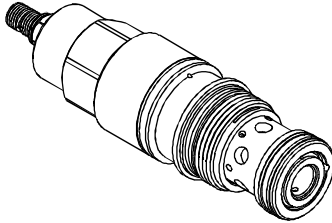


◆ **DIMENSIONS 外型尺寸圖**



◆ MODEL 型 式

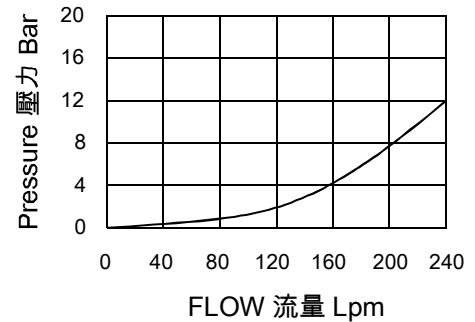
VHC-06



◆ DESCRIPTION 說明

Direct-acting sequence valves with reverse-flow check will supply a secondary circuit with flow once the pressure at the port 1 (inlet) has exceeded the valve setting. Additionally, these valves incorporate an integral check valve to provide reverse flow from port 2 (sequence) to port 1 (inlet). It will be connected to tank no matter the oil through by port 3 or not.
直動式帶逆流單向閥的順序閥將在口1(進口)壓力超過閥的設定之後向次級油路供油。此外，此類閥內部集成單向閥，可以提供從口2(順序口)到口1(進口)逆向液流。口3不管有沒有油都要接到油箱。

◆ PERFORMANCE 特性曲線



◆ SPECIFICATIONS 規 格

Model Number 型式號碼	Maximum Pressure 最大壓力 bar	Maximum Flow 最大流量 lpm	Free Flow check cracking pressure 止逆閥開啓壓力 bar	Weight 重量 Kg
VHC-06	350 (5076 psi)	240 (63.4 gpm)	2.8 (40.61 psi)	0.76 (1.68 lbs)
Fluid Type 流體型式			ISO VG 32, 46, 68	
Viscosity 黏性 cSt			10~400 (59~1854 SSU)	
Operating Temperature 操作溫度 °C			-30~100 (-22~212°F)	
Contamination Level 污染標準			ISO4406. 21/19/16 NAS1638,10	

◆ HOW TO ORDER 編號說明

1	2	3	4	5
VHC	06	— *	— *	— *

1 VALVE SERIES 系列名稱

VHC= Cartridge Direct Acting Type Check Sequence Valve
插入式直動型止逆順序閥

2 SUBPLATE MOUNTING SIZE 稱呼口徑

06: T-17A
Cavity 孔口: CST-17A
See Page Appendixes-A_004
見附錄A_004 頁面

3 ADJUSTMENT PRESSURE 壓力調整範圍

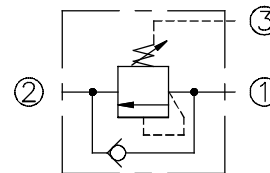
Code 編碼	Adjustment pressure 壓力調整範圍
05	14 ~ 55 (bar)
10	20 ~ 105 (bar)
20	35 ~ 210 (bar)
30	55 ~ 315 (bar)
40	140 ~ 420 (bar)

4 ADJUSTMENT OPTION 調整選擇

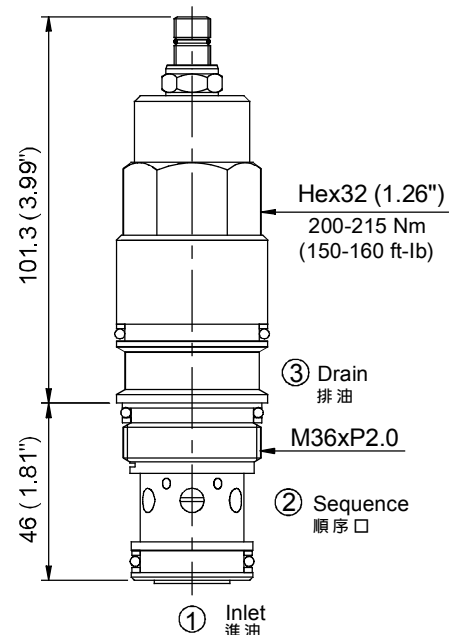
NONE	NONE: TOOL ADJUST 無：工具調整式	
C	C: TAMPER RESISTANT COVER C：防調封蓋	
K	K: HAND-BAR ADJUST K：手把調整式	

5 DESIGN NO 設計編號

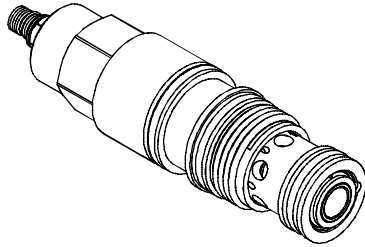
◆ CONTROL PORT(S) 動作形式



◆ DIMENSIONS 外型尺寸圖



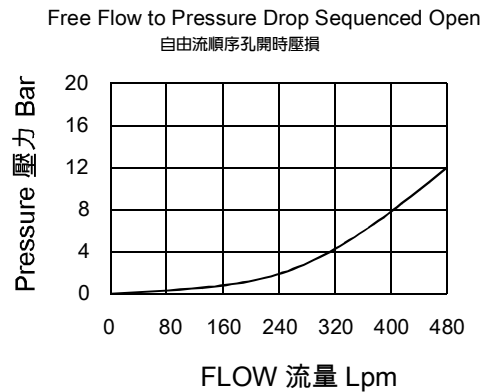
◆ **MODEL 型 式**
VHC-10



◆ **DESCRIPTION 說明**

Direct-acting sequence valves with reverse-flow check will supply a secondary circuit with flow once the pressure at the port 1 (inlet) has exceeded the valve setting. Additionally, these valves incorporate an integral check valve to provide reverse flow from port 2 (sequence) to port 1 (inlet). It will be connected to tank no matter the oil through by port 3 or not.
直動式帶逆流單向閥的順序閥將在口1(進口)壓力超過閥的設定之後向次級油路供油。此外，此類閥內部集成單向閥，可以提供從口2(順序口)到口1(進口)逆向液流。口3不管有沒有油都要接到油箱。

◆ **PERFORMANCE 特性曲線**



◆ **SPECIFICATIONS 規 格**

Model Number 型式號碼	Maximum Pressure 最大壓力 bar	Maximum Flow 最大流量 lpm	Free Flow check cracking pressure 止逆閥開啓壓力 bar	Weight 重量 Kg
VHC-10	350 (5076 psi)	480 (126.8 gpm)	2.8 (40.61 psi)	1.7 (3.75 lbs)
Fluid Type 流體型式			ISO VG 32, 46, 68	
Viscosity 黏性 cSt			10~400 (59~1854 SSU)	
Operating Temperature 操作溫度 °C			-30~100 (-22~212°F)	
Contamination Level 污染標準			ISO4406. 21/19/16 NAS1638,10	

◆ **HOW TO ORDER 編號說明**

1	2	3	4	5
VHC	10	— *	— *	— *

1 VALVE SERIES 系列名稱

VHC= Cartridge Direct Acting Type
Check Sequence Valve
插入式直動型止逆順序閥

2 SUBPLATE MOUNTING SIZE 稱呼口徑

10: T-19A
Cavity 孔口: CST-19A
See Page Appendixes-A_007
見附錄A_007 頁面

3 ADJUSTMENT PRESSURE 壓力調整範圍

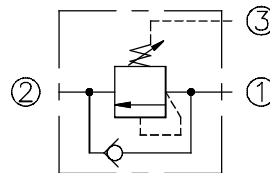
Code 編碼	Adjustment pressure 壓力調整範圍
05	14 ~ 55 (bar)
10	20 ~ 105 (bar)
20	35 ~ 210 (bar)
30	55 ~ 315 (bar)
40	140 ~ 420 (bar)

4 ADJUSTMENT OPTION 調整選擇

NONE	NONE:TOOL ADJUST 無：工具調整式	
C	C:TAMPER RESISTANT COVER C：防調封蓋	
K	K:HAND-BAR ADJUST K：手把調整式	

5 DESIGN NO 設計編號

◆ **CONTROL PORT(S) 動作形式**



◆ **DIMENSIONS 外型尺寸圖**

