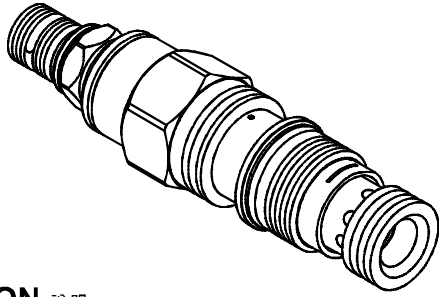
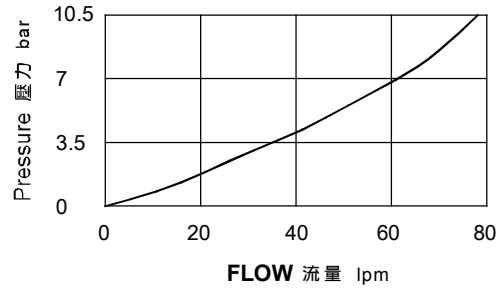


### ◆ MODEL 型 式

VHG-02



### ◆ PERFORMANCE (Cartridge Only) 特性曲線



### ◆ DESCRIPTION 說明

Balanced piston sequence valves will supply a secondary circuit with flow once the pressure at the inlet (port 1) has exceeded the valve setting. The pressure setting of a sequence valve controls the pressure at port 1 relative to the pressure at the drain (port 3). These valves are insensitive to back pressure at port 2 (sequence), up to the valve setting. They may be used to regulate pressure in place of 2-port relief valves if there is pressure in the return line.

Not suitable for use in load holding applications due to spool leakage.

平衡滑閥結構順序閥將在進口(口1)壓力超過閥的設定之後向次級油路供油。順序閥的設定將控制與外泄口(口3)壓力相關的口1壓力。在口2(順序口)背壓升至設定值之前,此類閥對此不敏感。如果回路中有壓力存在,它們可以用來代替2口溢流閥完成對壓力的調節。因為滑閥的洩漏,不適合使用在負載鎖緊應用中。

### ◆ SPECIFICATIONS 規 格

Model Number 型式號碼	Maximum Pressure 最大壓力 bar	Maximum Flow 最大流量 lpm	Weight 重量 Kg
VHG-02	350 (5076 psi)	60 (15.85 gpm)	0.2 (0.44lbs)
Fluid Type 流體型式		ISO VG 32, 46, 68	
Viscosity 黏性 cSt		10~400 (59~1854 SSU)	
Operating Temperature 操作溫度 °C		-30~100 (-22~212°F)	
Contamination Level 污染標準		ISO4406. 21/19/16 NAS1638,10	

### ◆ HOW TO ORDER 編號說明

<b>1</b>	<b>2</b>	<b>3</b>	<b>4</b>
VHG	02	*	*

#### 1 VALVE SERIES 系列名稱

VHG = CARTRIDGE TYPE SEQUENCE VALVES  
插入式順序閥

#### 2 SUBPLATE MOUNTING SIZE 稱呼口徑

02 : T-11A  
Cavity 孔口: CST-11A  
See Page Appendixes-A\_006  
見附錄A\_006頁面

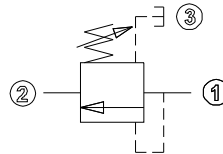
#### 3 ADJUSTMENT PRESSURE 壓力調整範圍

Code 編碼	Adjustment pressure 壓力調整範圍
06	2 ~ 60 (bar)
10	3.5 ~ 105 (bar)
21	7 ~ 210 (bar)
31	10 ~ 315 (bar)
42	10 ~ 420 (bar)

#### 4 ADJUSTMENT OPTION 調整選擇

NONE	NONE: TOOL ADJUST 無: 工具調整式	
K	K: HAND-BAR ADJUST K: 手把調整式	

### ◆ CONTROL PORT(S) 動作形式



### ◆ DIMENSIONS 外型尺寸圖

