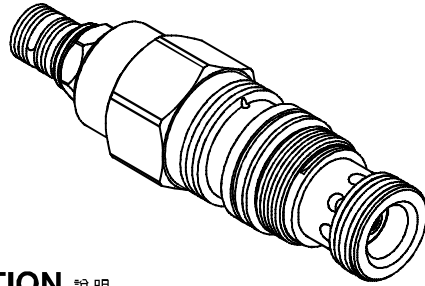
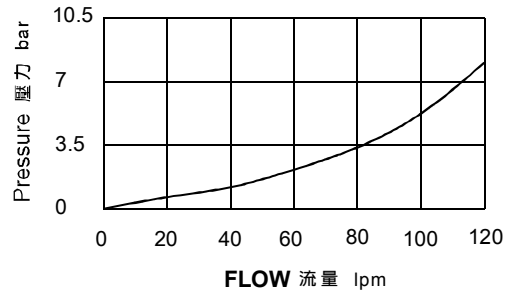


◆ **MODEL** 型 式  
VHG-03



◆ **PERFORMANCE**(Cartridge Only) 特性曲線



◆ **DESCRIPTION** 說明

Balanced piston sequence valves will supply a secondary circuit with flow once the pressure at the inlet (port 1) has exceeded the valve setting. The pressure setting of a sequence valve controls the pressure at port 1 relative to the pressure at the drain (port 3). These valves are insensitive to back pressure at port 2 (sequence), up to the valve setting. They may be used to regulate pressure in place of 2-port relief valves if there is pressure in the return line. Not suitable for use in load holding applications due to spool leakage.

平衡滑閥結構順序閥將在進口（口1）壓力超過閥的設定之後向次級油路供油。順序閥的設定將控制與外泄口（口3）壓力相關的口1壓力。在口2（順序口）背壓升至設定值之前，此類閥對此不敏感。如果回路中有壓力存在，它們可以用來代替2口溢流閥完成對壓力的調節。因為滑閥的洩漏，不適合用在負載鎖緊應用中。

◆ **SPECIFICATIONS** 規 格

| Model Number<br>型式號碼                 | Maximum Pressure<br>最大壓力 bar | Maximum Flow<br>最大流量 lpm     | Weight<br>重量 Kg |
|--------------------------------------|------------------------------|------------------------------|-----------------|
| VHG-03                               | 350 (5076 psi)               | 120 (31.70 gpm)              | 0.33 (0.73lbs)  |
| <b>Fluid Type</b> 流體型式               |                              | ISO VG 32 , 46 , 68          |                 |
| <b>Viscosity</b> 黏性 cSt              |                              | 10~400 (59~1854 SSU)         |                 |
| <b>Operating Temperature</b> 操作溫度 °C |                              | -30~100 (-22~212°F)          |                 |
| <b>Contamination Level</b> 污染標準      |                              | ISO4406. 21/19/16 NAS1638,10 |                 |

◆ **HOW TO ORDER** 編號說明

| 1   | 2  | 3 | 4 |
|-----|----|---|---|
| VHG | 03 | * | * |

**1** **VALVE SERIES** 系列名稱

VHG =CARTRIDGE TYPE SEQUENCE VALVES  
插入式順序閥

**2** **SUBPLATE MOUNTING SIZE** 稱呼口徑

03 :T-2A  
Cavity 孔口:CST-2A  
See Page Appendixes-A\_006  
見附錄A\_006頁面

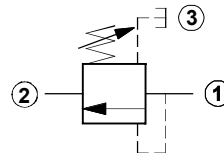
**3** **ADJUSTMENT PRESSURE** 壓力調整範圍

| Code<br>編碼 | Adjustment pressure<br>壓力調整範圍 |
|------------|-------------------------------|
| 06         | 2 ~ 60 (bar)                  |
| 10         | 3.5 ~ 105 (bar)               |
| 21         | 7 ~ 210 (bar)                 |
| 31         | 10 ~ 315 (bar)                |
| 42         | 10 ~ 420 (bar)                |

**4** **ADJUSTMENT OPTION** 調整選擇

|      |                              |  |
|------|------------------------------|--|
| NONE | NONE:TOOL ADJUST<br>無：工具調整式  |  |
| K    | K:HAND-BAR ADJUST<br>K：手把調整式 |  |

◆ **CONTROL PORT(S)** 動作形式



◆ **DIMENSIONS** 外型尺寸圖

