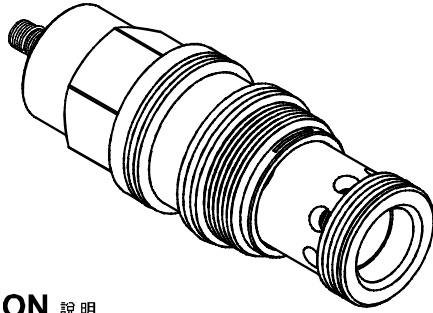
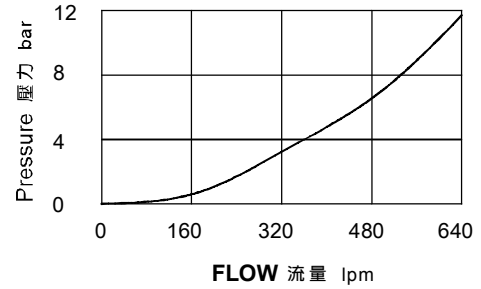


◆ **MODEL** 型 式  
**VHG-10**



◆ **PERFORMANCE**(Cartridge Only) 特性曲線



◆ **DESCRIPTION** 說明

Balanced piston sequence valves will supply a secondary circuit with flow once the pressure at the inlet (port 1) has exceeded the valve setting. The pressure setting of a sequence valve controls the pressure at port 1 relative to the pressure at the drain (port 3). These valves are insensitive to back pressure at port 2 (sequence), up to the valve setting. They may be used to regulate pressure in place of 2-port relief valves if there is pressure in the return line. Not suitable for use in load holding applications due to spool leakage.

平衡滑閥結構順序閥將在進口（口1）壓力超過閥的設定之後向次級油路供油。順序閥的設定將控制與外泄口（口3）壓力相關的口1壓力。在口2（順序口）背壓升至設定值之前，此類閥對此不敏感。如果回路中有壓力存在，它們可以用來代替2口溢流閥完成對壓力的調節。因為滑閥的洩漏，不適合用在負載鎖緊應用中。

◆ **SPECIFICATIONS** 規 格

Model Number 型式號碼	Maximum Pressure 最大壓力 bar	Maximum Flow 最大流量 lpm	Weight 重量 Kg
VHG-10	350 (5076 psi)	480 (126.80 gpm)	1.45 (3.20lbs)
<b>Fluid Type</b> 流體型式		ISO VG 32 , 46 , 68	
<b>Viscosity</b> 黏性 cSt		10~400 (59~1854 SSU)	
<b>Operating Temperature</b> 操作溫度 °C		-30~100 (-22~212°F)	
<b>Contamination Level</b> 污染標準		ISO4406. 21/19/16 NAS1638,10	

◆ **HOW TO ORDER** 編號說明

<b>1</b>	<b>2</b>	<b>3</b>	<b>4</b>
VHG	10	*	*

**1 VALVE SERIES** 系列名稱

VHG =CARTRIDGE TYPE SEQUENCE VALVES  
插入式順序閥

**2 SUBPLATE MOUNTING SIZE** 稱呼口徑

10 :T-19A  
Cavity 孔口:CST-19A  
See Page Appendixes-A\_007  
見附錄A\_007頁面

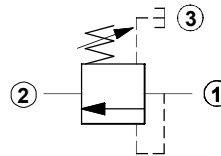
**3 ADJUSTMENT PRESSURE** 壓力調整範圍

Code 編碼	Adjustment pressure 壓力調整範圍
06	2 ~ 60 (bar)
10	3.5 ~ 105 (bar)
21	7 ~ 210 (bar)
31	10 ~ 315 (bar)
42	10 ~ 420 (bar)

**4 ADJUSTMENT OPTION** 調整選擇

NONE	NONE:TOOL ADJUST 無：工具調整式	
K	K:HAND-BAR ADJUST K：手把調整式	

◆ **CONTROL PORT(S)** 動作形式



◆ **DIMENSIONS** 外型尺寸圖

