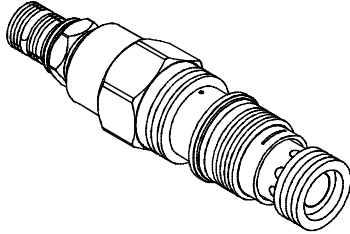


◆ **MODEL 型式**
VHQ-03

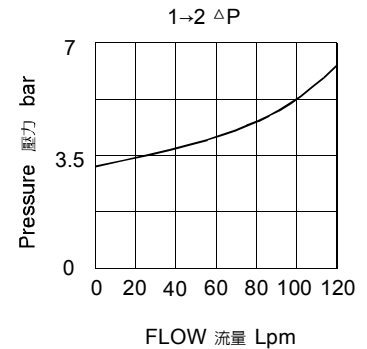


◆ **DESCRIPTION 說明**

Cartridge type kick-down sequence valves is a special type of pressure control valve . When the pressure is lower than set pressure, the valve remains close. However when the pressure reach/over set pressure, the valve will completely open. Although the second pressure lower than set pressure, the valve remains open. The valve will kick completely open and remain open once the pressure at the inlet (port 1) exceeds the valve setting, creating an unrestricted flow path from port 1 to port 2 (sequence). The valve remains open as long as the pressure at port 1 exceeds the pressure at port 2. To reset the valve, pressure at port 1 must fall below the setting of the valve.

插入式卸壓型順序閥是特殊型式的壓力控制閥。當系統一次壓低於設定壓時，閥保持關閉；而達到設定壓時，則全開，即使二次壓使系統壓降至低於設定壓仍保持開閥狀況。
(口1) 壓力超過閥設定時全開並保持打開狀態，產生從口1到口2 (順序口) 的自由油路。只要口1壓力超過口2壓力，閥就會保持打開狀態。欲重新設定此類閥，口1壓力必須降至閥的設定值之下

◆ **PERFORMANCE 特性曲線**



◆ **SPECIFICATIONS 規格**

Model Number 型式號碼	Operating Pressure 操作壓力 bar	Flow 流量 lpm	Weight 重量 Kg
VHQ-03	350 (5076 psi)	60 (15.85 gpm)	0.2 (0.44 lbs)
Fluid Type 流體型式		ISO VG 32 , 46 , 68	
Viscosity 黏性 cSt		10~400 (59~1854 SSU)	
Operating Temperature 操作溫度 °C		-30~100 (-22~212°F)	
Contamination Level 污染標準		ISO4406. 21/19/16 NAS1638,10	

◆ **HOW TO ORDER 編號說明**

1	2	3	4	5
VHQ	03	— *	— *	— *

1 VALVE SERIES 系列名稱

VHQ = Cartridge Type Kick-down Sequence Valves
插入式卸壓型順序閥

2 SUBPLATE MOUNTING SIZE 稱呼口徑

03 :T-2A
Cavity 孔口:CST-2A
See Page Appendixes-A_006
見附錄A_006頁面

3 ADJUSTMENT PRESSURE 壓力調整範圍

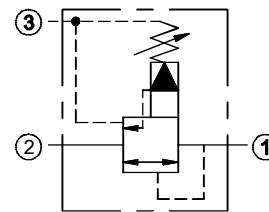
Code 編碼	Adjustment pressure 壓力調整範圍
06	※ ~ 60 (bar)
10	3.5 ~ 100 (bar)
21	7 ~ 210 (bar)
30	8 ~ 315 (bar)
40	12 ~ 420 (bar)

4 ADJUSTMENT OPTION 調整選擇

NONE	NONE:TOOL ADJUST 無：工具調整式	
K	K:HAND-BAR ADJUST K：手把調整式	

5 DESIGN NO 設計編號

◆ **CONTROL PORT(S) 動作形式**



◆ **DIMENSIONS 外型尺寸圖**

