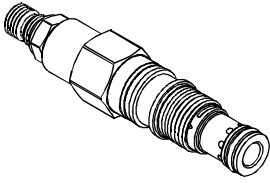


### ◆ MODEL 型 式

VRA-01



### ◆ DESCRIPTION 說明

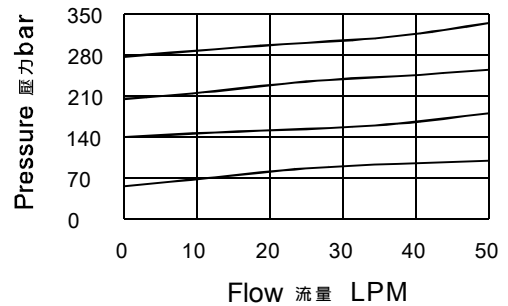
Pilot-operated, relief cartridges are normally closed pressure regulating valves. When the pressure at the port 1 (inlet) reaches the valve setting, the valve starts to open to port 2 (tank). They provide a vent port (port 3) that connects between the main piston and pilot stage to provide for remote control by other pilot or 2-way valves. A remote pilot relief on port 3 (vent) will control the valve below its own setting.

先導控制式，溢流插裝閥為常閉壓力調節閥。當口1(進口)壓力達到閥設定值，閥開始向口2(油箱)溢流。此類閥在主級活塞和先導級之間提供了一個外接口(口3)，可以接入其它先導級控制閥或2通閥實現遠程控制。

口3(外接口)處的遠程先導溢流閥可以控制此閥壓力低於設定值。

### ◆ PERFORMANCE(Cartridge Only)

特性曲線



### ◆ SPECIFICATIONS 規 格

Model Number 型式號碼	Maximum Pressure 最大壓力 bar	Maximum Flow 最大流量 Lpm	Weight 重量 Kg
VRA-01	350 (5076 psi)	30 (7.93 gpm)	0.13 (0.29 lbs)
Fluid Type 流體型式		ISO VG 32,46,68	
Viscosity 黏性 cSt		10~400 (59~1854SSU)	
Operating Temperature 操作溫度 °C		-15~70 (-5~158°F)	
Contamination Level 污染標準		ISO4406. 21/19/16 NAS1638,10	

### ◆ HOW TO ORDER 編號說明

1	2	3	4
VRA	01	*	*

#### 1 VALVE SERIES 系列名稱

VRA= CARTRIDGE TYPE RELIEF VALVES  
(Remote Control Included)  
插入式調壓閥(附遙控)

#### 2 SUBPLATE MOUNTING SIZE 稱呼口徑

01 : T-163A  
Cavity 孔口 : CST-163A  
See Page Appendixes-A\_008  
見附錄A\_008 頁面

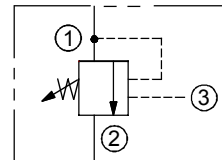
#### 3 ADJUSTMENT OPTION 調整選擇

Code 編碼	Adjustment pressure 壓力調整範圍
02	※ ~ 25 (bar)
06	※ ~ 60 (bar)
10	※ ~ 100 (bar)
20	8 ~ 210 (bar)
30	8 ~ 315 (bar)
40	12 ~ 420 (bar)

#### 4 ADJUSTMENT OPTION 調整選擇

NONE	NONE:TOOL ADJUST 無：工具調整式	
K	K:HAND-BAR ADJUST K：手把調整式	

### ◆ CONTROL PORT(S) 動作形式



### ◆ DIMENSIONS 外型尺寸圖

