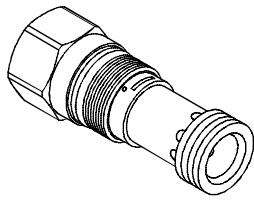


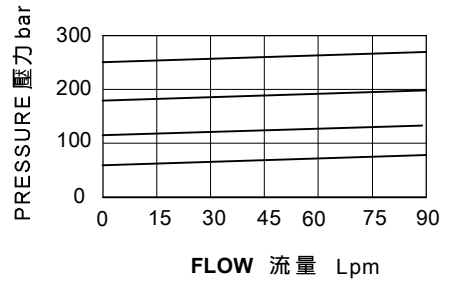
◆ **MODEL** 型 式
VRCP-02



◆ **DESCRIPTION** 說明

The-8 control option allows a pilot control valve to be incorporated directly into the end of the modulating element via the T-8A cavity . These pilot control cartridges are sold separately and include electro-proportional . Hydraulic pilot operation .
T-8A控制是用導壓級控制閥直接插在減壓閥六角頭上的T-8A插孔中,導壓級控制閥需單獨訂購包括比例閥.液導.

◆ **PERFORMANCE** 特性曲線



◆ **SPECIFICATIONS** 規 格

Model Number 型式號碼	Maximum Pressure 最大壓力 bar	Minimum Control Pressure 最小控制壓力 bar	Flow 流量 lpm	Weight 重量 Kg
VRCP-02	350 (5076 psi)	1.7 (25 psi)	100 (26.42 gpm)	0.12 (0.26 lbs)
Fluid Type 流體型式			ISO VG 32 , 46 , 68	
Viscosity 黏性 cSt			10~400 (59~1854 SSU)	
Operating Temperature 操作溫度 °C			-30~100 (-22~212°F)	
Contamination Level 污染標準			ISO4406. 21/19/16 NAS1638,10	

◆ **HOW TO ORDER** 編號說明

1	2	3
VRCP	02 —	A

1 VALVE SERIES 系列名稱

VRCP= Cartridge Type Relief Valves
(Pilot Operated Type, With Integral T-8A Control Cavity)
插入式調壓閥(導壓式,帶集成T-8A控制插孔)

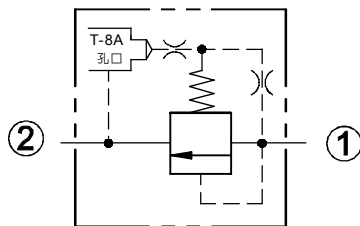
2 SUBPLATE MOUNTING SIZE 稱呼口徑

02 :T-10A
Cavity 孔口:CST-10A
See Appendixes-A 見附錄A
For Manifold See Appendixes-B 油路板見附錄B

3 MINIMUM CONTROL PRESSURE 最小控制壓力

A : 1.7 bar(25psi)
B : 7 bar(102psi)

◆ **CONTROL PORT(S)** 動作形式



◆ **DIMENSIONS** 外型尺寸圖

