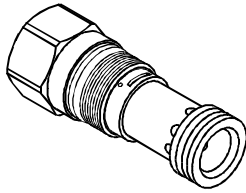


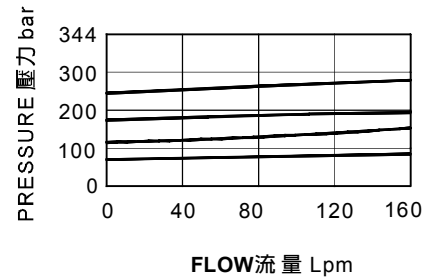
◆ MODEL 型 式 VRCP-03



◆ DESCRIPTION 說明

The -8 control option allows a pilot control valve to be incorporated directly into the end of the modulating element via the T-8A cavity. These pilot control cartridges are sold separately and include electro-proportional. Hydraulic pilot operation. T-8A控制是用導壓級控制閥直接插在減壓閥六角頭上的T-8A插孔中,導壓級控制閥需單獨訂購包括比例閥.液導.

◆ PERFORMANCE 特性曲線



◆ SPECIFICATIONS 規 格

Model Number 型式號碼	Maximum Pressure 最大壓力 bar	Flow 流量 lpm	Weight 重量 Kg
VRCP-03	350 (5076 psi)	200 (52.83 gpm)	0.2 (0.44 lbs)
Fluid Type 流體型式		ISO VG 32, 46, 68	
Viscosity 黏性 cSt		10~400 (59~1854 SSU)	
Operating Temperature 操作溫度 °C		-15~70 (-5~158 °F)	
Contamination Level 污染標準		ISO4406. 21/19/16 NAS1638,10	

◆ HOW TO ORDER 編號說明

1	2	3
VRCP	03	A

1 VALVE SERIES 系列名稱

VRCP= Cartridge Type Relief Valves (Pilot Control Valves)
插入式調壓閥(導壓級)

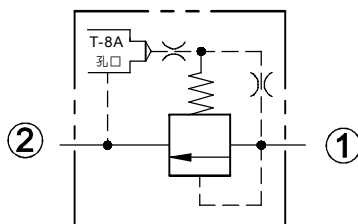
2 SUBPLATE MOUNTING SIZE 稱呼口徑

03 : T-3A
Cavity 孔口: CST-3A
See Page Appendixes-A_006
見附錄A_006 頁面

3 MINIMUM CONTROL PRESSURE 最小控制壓力

A : 1.7 bar(25psi)
B : 7 bar(102psi)

◆ CONTROL PORT(S) 動作形式



◆ DIMENSIONS 外型尺寸圖

