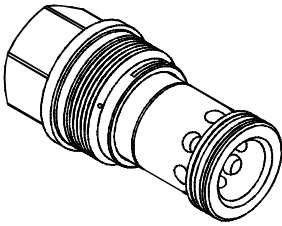


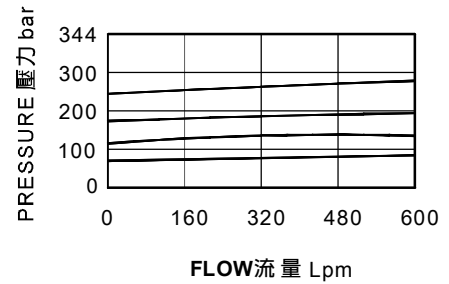
### ◆ MODEL 型 式 VRCP-10



### ◆ DESCRIPTION 說明

The -8 control option allows a pilot control valve to be incorporated directly into the end of the modulating element via the T-8A cavity. These pilot control cartridges are sold separately and include electro-proportional. Hydraulic pilot operation. T-8A控制是用導壓級控制閥直接插在減壓閥六角頭上的T-8A插孔中,導壓級控制閥需單獨訂購包括比例閥.液導.

### ◆ PERFORMANCE 特性曲線



### ◆ SPECIFICATIONS 規 格

Model Number 型式號碼	Maximum Pressure 最大壓力 bar	Flow 流量 lpm	Weight 重量 Kg
VRCP-10	350 (5076 psi)	760 (200.77 gpm)	1.0 (2.2 lbs)
Fluid Type 流體型式		ISO VG 32, 46, 68	
Viscosity 黏性 cSt		10~400 (59~1854 SSU)	
Operating Temperature 操作溫度 °C		-15~70 (-5~158°F)	
Contamination Level 污染標準		ISO4406. 21/19/16 NAS1638,10	

### ◆ HOW TO ORDER 編號說明

<b>1</b>	<b>2</b>	<b>3</b>
VRCP	10 —	A

#### 1 VALVE SERIES 系列名稱

VRCP= Cartridge Type Relief Valves (Pilot Control Valves)  
插入式調壓閥(導壓級)

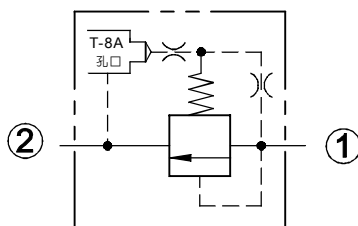
#### 2 SUBPLATE MOUNTING SIZE 稱呼口徑

10 : T-18A  
Cavity 孔口: CST-18A  
See Page Appendixes-A\_007  
見附錄A\_007頁面

#### 3 MINIMUM CONTROL PRESSURE 最小控制壓力

A : 1.7 bar(25psi)  
B : 7 bar(102psi)

### ◆ CONTROL PORT(S) 動作形式



### ◆ DIMENSIONS 外型尺寸圖

