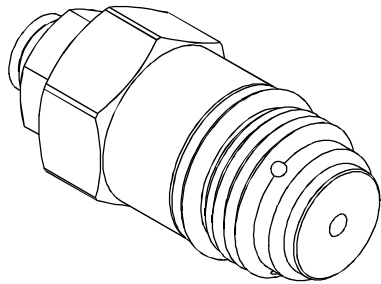


# PRESSURE CONTROL VALVES 壓力控制閥

## VRV SERIES CARTRIDGE TYPE RELIEF VALVES VRV 系列插入式調壓閥

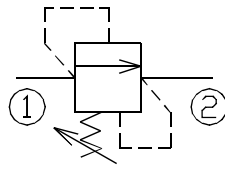
### ◆ MODEL 型 式

VRV-16M



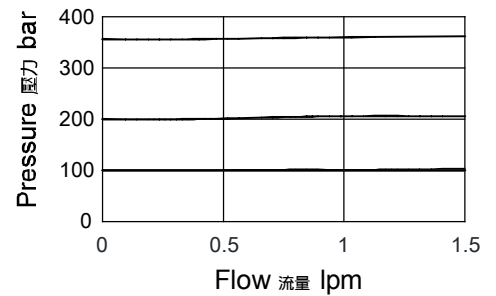
### ◆ CONTROL PORT(S) 動作形式

動作形式



### ◆ PERFORMANCE (Cartridge Only) 特性曲線

特性曲線



### ◆ SPECIFICATIONS 規 格

Model Number 型式號碼	Maximum Pressure 最大壓力 bar	Maximum Flow 最大流量 lpm	Weight 重量 Kg
VRV-16M	460 (6672 psi)	1.5 (0.4 gpm)	0.07 (0.15 lbs)
Fluid Type 流體型式		ISO VG 32, 46, 68	
Viscosity 黏性 cSt		10~400 (59~1854 SSU)	
Operating Temperature 操作溫度 °C		-30~100 (-22~212°F)	
Contamination Level 污染標準		ISO4406. 20/18/15 NAS1638. 9	

### ◆ HOW TO ORDER 編號說明

1	2	3	4
VRV	16M	35	*

#### 1 VALVE SERIES 系列名稱

VRV= Cartridge Type Relief Valves  
插入式調壓閥

#### 2 SUBPLATE MOUNTING SIZE 稱呼口徑

Size: 16M  
Cavity 孔口: CS16M-2N  
For Manifold See Appendices-B 油路板見附錄B

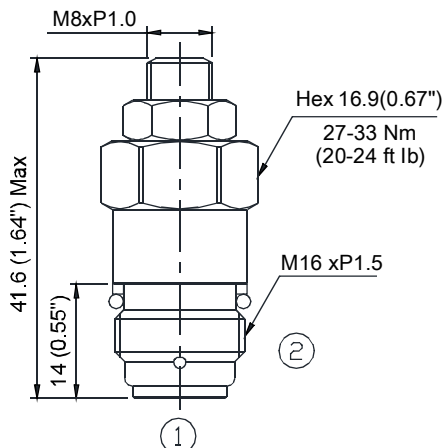
#### 3 ADJUSTMENT PRESSURE 壓力調整範圍

Code 編碼	Adjustment pressure 壓力調整範圍
35	70 ~ 350 (bar)
42	150 ~ 420 (bar)

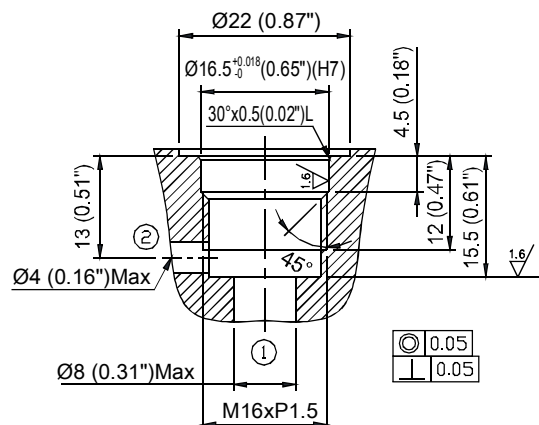
#### 4 ADJUSTMENT OPTION 調整選擇

NONE	NONE: TOOL ADJUST 無: 工具調整式	
------	-------------------------------	--

### ◆ DIMENSIONS 外型尺寸圖



### ◆ DIMENSIONS 孔口尺寸圖



CS16M-2N