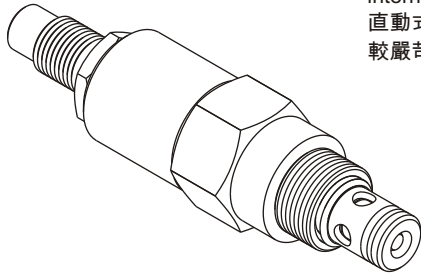


◆ **MODEL 型 式**

VRV08-22



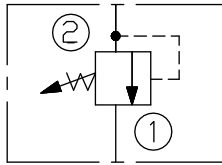
◆ **DESCRIPTION 說明**

A direct-acting, differential area, poppet-type hydraulic relief valve for use as a pressure limiting device in more demanding hydraulic circuits, requiring low hysteresis and low internal leakage.

直動式,差動型溢流閥,作為壓力限制裝置用於較嚴苛的液壓回路,要求低滯後和極小內泄漏。

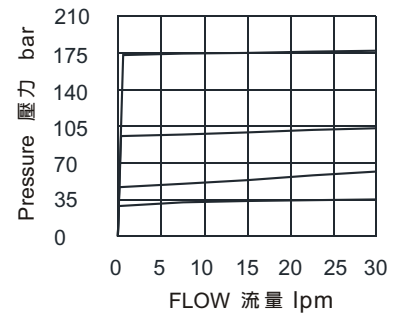
◆ **CONTROL PORT(S)**

動作形式



◆ **PERFORMANCE(Cartridge Only)**

特性曲線



◆ **SPECIFICATIONS 規 格**

Model Number 型式號碼	Operating Pressure 操作壓力 bar	Flow 流量 lpm	Weight 重量 Kg
VRV08-22	320 (4641 psi)	30 (7.93 gpm)	0.22 (0.48 lbs)
Fluid Type 流體型式		ISO VG 32 , 46 , 68	
Viscosity 黏性 cSt		10~400 (59~1854 SSU)	
Operating Temperature 操作溫度 °C		-30~100 (-22~212°F)	
Contamination Level 污染標準		ISO4406. 21/19/16 NAS1638,10	

◆ **HOW TO ORDER 編號說明**

1	2	3	4	5	6
VRV	08	*	*	22	***

1 VALVE SERIES 系列名稱

VRV= CARTRIDGE TYPE RELIEF VALVES
(DIRECT ACTING TYPE)

插入式調壓閥(直動式)

2 SUBPLATE MOUNTING SIZE 稱呼口徑

Size:08

Cavity 孔口:CS08-2N

See Page Appendixes-A_001

見附錄A_001 頁面

3 ADJUSTMENT PRESSURE 壓力調整範圍

Code 編碼	Adjustment pressure 壓力調整範圍
06	4 ~ 60 (bar)
12	7 ~ 120 (bar)
24	7 ~ 220 (bar)
31	27 ~ 315 (bar)

4 ADJUSTMENT OPTION 調整選擇

NONE	NONE:TOOL ADJUST 無：工具調整式	
F	F:FACTORY PRESET, Non-ADJ. F：工廠預設,不可調整式	
H	H:FACTORY PRESET HIDDEN ADJ. H：工廠預設隱藏調整式	
K	K:HAND-BAR ADJUST K：手把調整式	
K1	K1:HAND-BAR ADJUST K1：手把調整式	
C	C: COVER CAP C：帶螺帽蓋	

5 DESIGN NO 設計編號

6 SETTING IN BAR 設置(bar)

Pressure requested by customer, for example :
客戶指定壓力,例如:

30 : 30 bar

100 : 100 bar

◆ **DIMENSIONS** 外型尺寸圖

