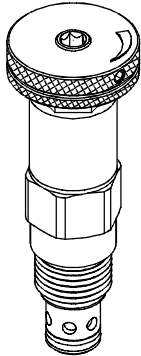


◆ MODEL 型 式

VRV10-22

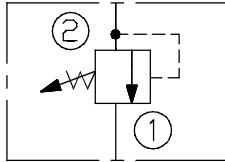


◆ DESCRIPTION 說明

A direct-acting, differential area, poppet-type hydraulic relief valve for use as a pressure limiting device in more demanding hydraulic circuits, requiring low hysteresis and low internal leakage.

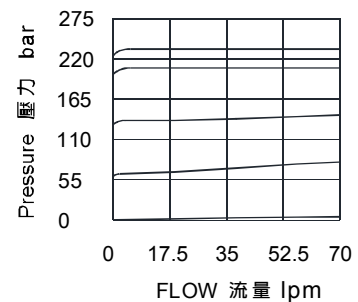
直動式,差動型溢流閥,作為壓力限制裝置用於較嚴苛的液壓回路,要求低滯後和極小內泄漏。

◆ CONTROL PORT(S) 動作形式



◆ PERFORMANCE (Cartridge Only)

特性曲線



◆ SPECIFICATIONS 規 格

Model Number 型式號碼	Operating Pressure 操作壓力 bar	Flow 流量 lpm	Weight 重量 Kg
VRV10-22	340 (4931 psi)	70 (18.49 gpm)	0.23 (0.50 lbs)
Fluid Type 流體型式		ISO VG 32, 46, 68	
Viscosity 黏性 cSt		10~400 (59~1854 SSU)	
Operating Temperature 操作溫度 °C		-30~100 (-22~212°F)	
Contamination Level 污染標準		ISO4406. 21/19/16 NAS1638,10	

◆ HOW TO ORDER 編號說明

1	2	3	4	5	6
VRV	10	— *	— *	— 22	— / ***

1 VALVE SERIES 系列名稱

VRV= CARTRIDGE TYPE RELIEF VALVES (DIRECT ACTING TYPE)

插入式調壓閥(直動式)

2 SUBPLATE MOUNTING SIZE 稱呼口徑

Size: 10

Cavity 孔口: CS10-2N

See Page Appendixes-A_001

見附錄A_001 頁面

3 ADJUSTMENT PRESSURE 壓力調整範圍

Code 編碼	Adjustment pressure 壓力調整範圍
08	10 ~ 80 (bar)
15	17 ~ 150 (bar)
24	20 ~ 220 (bar)
34	34 ~ 340 (bar)

4 ADJUSTMENT OPTION 調整選擇

NONE	NONE: TOOL ADJUST 無: 工具調整式	
F	F: FACTORY PRESET, Non-ADJ. F: 工廠預設, 不可調整式	
H	H: FACTORY PRESET HIDDEN ADJ. H: 工廠預設隱藏調整式	
K	K: HAND-BAR ADJUST K: 手把調整式	
K1	K1: HAND-BAR ADJUST K1: 手把調整式	
C	C: COVER CAP C: 帶螺帽蓋	

5 DESIGN NO 設計編號

6 SETTING IN BAR 設置 (bar)

Pressure requested by customer, for example :

客戶指定壓力, 例如:

30 : 30 bar

100 : 100 bar

◆ DIMENSIONS 外型尺寸圖

