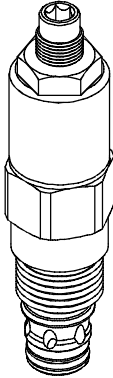


◆ **MODEL 型 式**

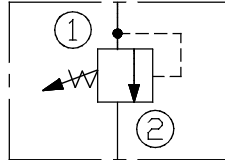
VRV10-26



◆ **DESCRIPTION 說明**

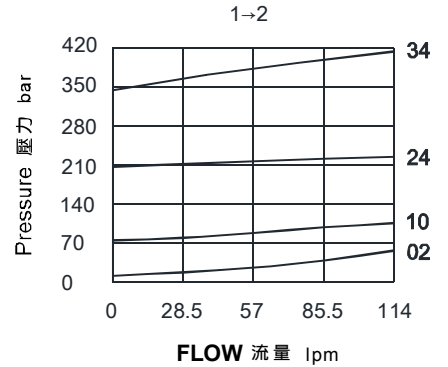
A cartridge-style, pilot-operated, hydraulic relief valve, intended for use as a pressure limiting device in demanding hydraulic circuits which require fast response and low hysteresis. 插入式,先導型,溢流閥,作為壓力限制裝置用於要求快速響應、低滯後的液壓回路。

◆ **CONTROL PORT(S) 動作形式**



◆ **PERFORMANCE (Cartridge Only)**

特性曲線



◆ **SPECIFICATIONS 規 格**

Model Number 型式號碼	Operating Pressure 操作壓力 bar	Flow 流量 lpm	Weight 重量 Kg
VRV10-26	340 (4931 psi)	110 (29.06 gpm)	0.25 (0.55 lbs)
Fluid Type 流體型式		ISO VG 32, 46, 68	
Viscosity 黏性 cSt		10~400 (59~1854 SSU)	
Operating Temperature 操作溫度 °C		-30~100 (-22~212°F)	
Contamination Level 污染標準		ISO4406. 21/19/16 NAS1638,10	

◆ **HOW TO ORDER 編號說明**

1	2	3	4	5	6
VRV	10	*	*	26	/**

1 VALVE SERIES 系列名稱
VRV= CARTRIDGE TYPE RELIEF VALVES
插入式調壓閥

2 SUBPLATE MOUNTING SIZE 稱呼口徑
Size:10

Cavity 孔口:CS10-2N
See Page Appendixes-A_001
見附錄A_001 頁面

3 ADJUSTMENT PRESSURE 壓力調整範圍

Code 編碼	Adjustment pressure 壓力調整範圍
02	* ~ 25 (bar)
04	* ~ 40 (bar)
10	10 ~ 100 (bar)
24	20 ~ 240 (bar)
34	20 ~ 340 (bar)

4 ADJUSTMENT OPTION 調整選擇

NONE	NONE: TOOL ADJUST 無: 工具調整式	
F	F: FACTORY PRESET, Non-ADJ. F: 工廠預設, 不可調整式	
H	H: FACTORY PRESET HIDDEN ADJ. H: 工廠預設隱藏調整式	
K	K: HAND-BAR ADJUST K: 手把調整式	
K1	K1: HAND-BAR ADJUST K1: 手把調整式	
C	C: COVER CAP C: 帶螺帽蓋	

5 DESIGN NO 設計編號

6 SETTING IN BAR 設置 (bar)

Pressure requested by customer, for example :
客戶指定壓力, 例如:
30 : 30 bar
100 : 100 bar

◆ **DIMENSIONS 外型尺寸圖**

