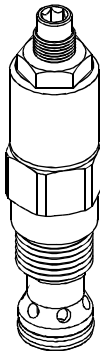


◆ **MODEL** 型 式

VRV12U-26

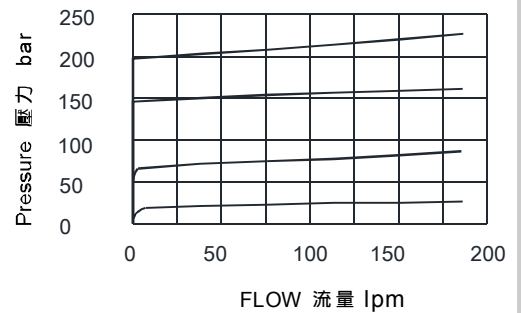


◆ **DESCRIPTION** 說明

A cartridge-style, pilot-operated, hydraulic relief valve, intended for use as a pressure limiting device in demanding hydraulic circuits which require fast response and low hysteresis. 插入式, 先導型, 溢流閥, 作為壓力限制裝置用於要求快速響應、低滯後的液壓回路。

◆ **PERFORMANCE** (Cartridge Only)

特性曲線



◆ **SPECIFICATIONS** 規 格

Model Number 型式號碼	Operating Pressure 操作壓力 bar	Flow 流量 lpm	Weight 重量 Kg
VRV12U-26	340 (4931 psi)	180 (47.55 gpm)	0.34 (0.75 lbs)
Fluid Type 流體型式		ISO VG 32 , 46 , 68	
Viscosity 黏性 cSt		10~400 (59~1854 SSU)	
Operating Temperature 操作溫度 °C		-30~100 (-22~212°F)	
Contamination Level 污染標準		ISO4406. 21/19/16 NAS1638,10	

◆ **HOW TO ORDER** 編號說明

1	2	3	4	5
VRV	12U	*	*	26

1 VALVE SERIES 系列名稱

VRV= CARTRIDGE TYPE RELIEF VALVES
插入式調壓閥

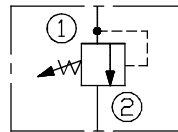
2 SUBPLATE MOUNTING SIZE 稱呼口徑

Size: 12U
Cavity 孔口: CS12U-2N

3 ADJUSTMENT PRESSURE 壓力調整範圍

Code 編碼	Adjustment pressure 壓力調整範圍
02	※ ~ 25 (bar)
10	10 ~ 100 (bar)
24	20 ~ 240 (bar)
34	20 ~ 340 (bar)

◆ **CONTROL PORT(S)** 動作形式

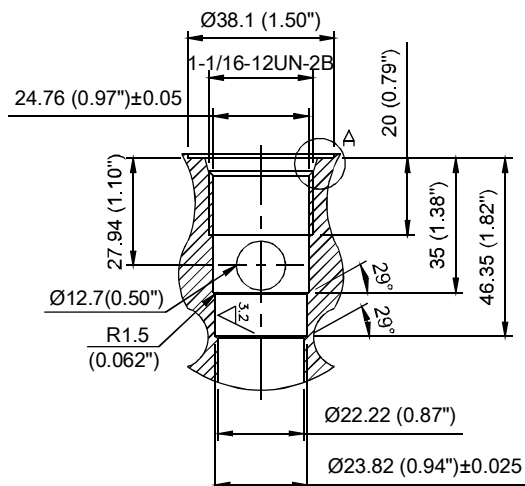
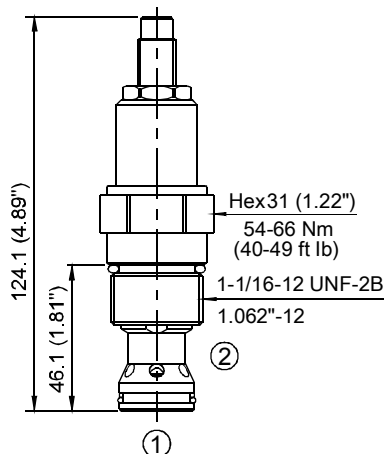


4 ADJUSTMENT OPTION 調整選擇

NONE	NONE: TOOL ADJUST 無: 工具調整式	
K	K: HAND-BAR ADJUST K: 手把調整式	
K1	K1: HAND-BAR ADJUST K1: 手把調整式	
C	C: COVER CAP C: 帶螺帽蓋	

5 DESIGN NO 設計編號

◆ **DIMENSIONS** 外型尺寸圖



CS12U-2N

