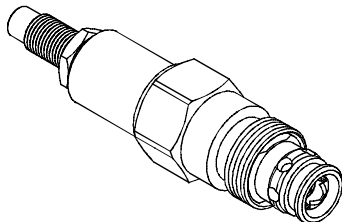


◆ **MODEL** 型式
VRVC-10



◆ **DESCRIPTION** 說明

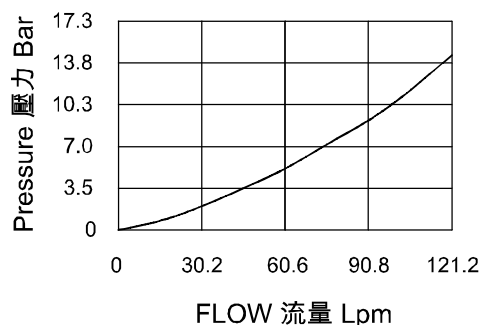
Poppet-type hydraulic relief valve, Intended for use as a pressure limiting device in demanding hydraulic circuits which require fast response, and low hysteresis. The flow from 1 to 2 until sufficient pressure is present at 1 to force the piloting relief off its seat, allowing the main poppet to shift, opening 1 to 2. The cartridge offers fast response to load changes in demanding hydraulic circuits.

※Although the VRVC-10 has a reverse flow check feature, its pressure differential (due to crack pressure) makes it unsuitable for anti-cavitation use.

座閥式溢流閥。作為壓力限制裝置用於要求快速反應、低遲滯的液壓回路。
常態下從1流向2封閉，直到1處受到足夠的液壓力使先導閥開啟，再推動主閥芯提升移動，使油液從1流向2。該閥可對液壓回路的負載變化作出快速反應。

※雖然VRVC-10型有反向流通特性，但它的壓差(取決於極限壓力)使它不適合於防氣穴現象使用。

◆ **PERFORMANCE** 特性曲線



◆ **SPECIFICATIONS** 規格

| Model Number 型式號碼 | Maximum Pressure 最大壓力 bar | Maximum Flow 最大流量 lpm | Weight 重量 Kg |
|--------------------------------------|---------------------------|------------------------------|-----------------|
| VRVC-10 | 240 (3481psi) | 114 (30.11gpm) | 0.25 (0.55 lbs) |
| Fluid Type 液體型式 | | ISO VG 32, 46, 68 | |
| Viscosity 黏性 cSt | | 10~400 (59~1854 SSU) | |
| Operating Temperature 操作溫度 °C | | -15~70 (-5~158 °F) | |
| Contamination Level 污染標準 | | ISO4406. 21/19/16 NAS1638,10 | |

◆ **HOW TO ORDER** 編號說明

| | | | | |
|----------|----------|----------|----------|----------|
| 1 | 2 | 3 | 4 | 5 |
| VRVC | 10 | * | * | * |

1 VALVE SERIES 系列名稱
VRVC=RELIEF, PILOT-OPERATED POPPET
先導式溢流閥

2 SUBPLATE MOUNTING SIZE 稱呼口徑
Size: 10
Cavity 孔口: CS10-2N
See Page Appendixes-A_001
見附錄A_001 頁面

3 ADJUSTMENT PRESSURE 壓力調整範圍

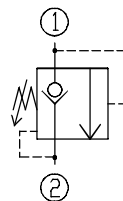
| Order 編號 | Adjustment pressure 壓力調整範圍 |
|----------|----------------------------|
| 14 | 7 ~ 137 (bar) |
| 24 | 21 ~ 240 (bar) |

4 ADJUSTMENT OPTION 調整選擇

| NONE | NONE: TOOL ADJUST 無: 工具調整式 | |
|------|--------------------------------|--|
| K | K: HAND-BAR ADJUST K: 手把調整式 | |

5 DESIGN NO 設計編號

◆ **CONTROL PORT(S)** 動作形式



◆ **DIMENSIONS** 外型尺寸圖

