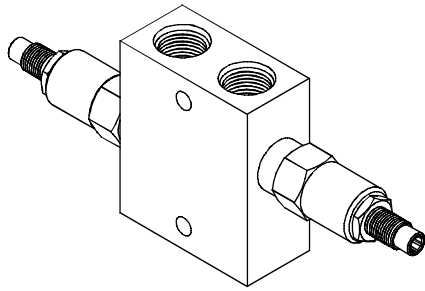


PRESSURE CONTROL VALVES 壓力控制閥

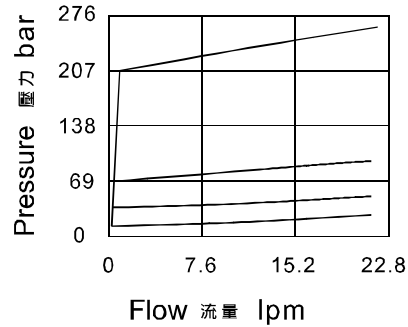
VRVD SERIES CROSS-OVER RELIEF, DIRECT-ACTING POPPET VRVD 系列雙向溢流閥(直動式)

MODEL 型式

VRVD08-20



PERFORMANCE (Cartridge Only) 特性曲線



SPECIFICATIONS 規格

Model Number 型式號碼	Operating Pressure 操作壓力 bar	Flow 流量 lpm	Weight 重量 Kg
VRVD08-20	320 (4641 psi)	20 (5.28 gpm)	1.7 (3.75 lbs)
Fluid Type 流體型式		ISO VG 32, 46, 68	
Viscosity 黏性 cSt		10~400 (59~1854 SSU)	
Operating Temperature 操作溫度 °C		-15~70 (-5~158°F)	
Contamination Level 污染標準		ISO4406. 21/19/16 NAS1638,10	

HOW TO ORDER 編號說明

1	2	3	4	5	6
VRVD	08	15	*	*	20



Body Material 閥體材料	Maximum Pressure 最大壓力 bar	Weight 重量 Kg
Aluminum (standard) 鋁 (標準)	240 (3481 psi)	0.42 (0.93 lbs)
Steel 鋼	350 (5076 psi)	1.10 (2.43 lbs)

1 VALVE SERIES 系列名稱

VRVD= CROSS-OVER RELIEF,
DIRECT-ACTING POPPET
雙向溢流閥(直動式)

2 SUBPLATE MOUNTING SIZE 稱呼口徑

08=3/8

3 ADJUSTMENT PRESSURE 壓力調整範圍

Order 編號	Adjustment pressure 壓力調整範圍
06	4 ~ 60 (bar)
12	7 ~ 120 (bar)
24	7 ~ 220 (bar)
31	27 ~ 315 (bar)

4 ADJUSTMENT OPTION 調整選擇

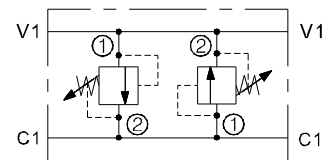
NONE	NONE: TOOL ADJUST 無：工具調整式	
K	K: HAND-BAR ADJUST K：手把調整式	

5 THREADED TYPE 螺紋規格

1P: PT 2N: NPT 3G: PF(G)
4A: SAE 5B: BSP

6 DESIGN NO 設計編號

CONTROL PORT(S) 動作形式



DIMENSIONS 外型尺寸圖

外型尺寸圖

