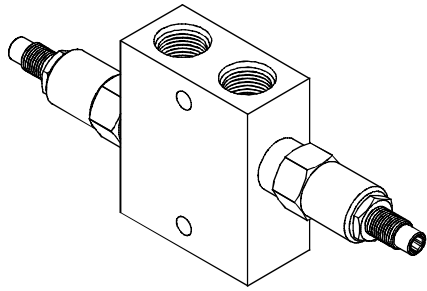
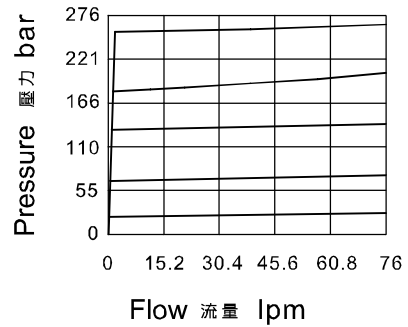


◆ **MODEL** 型 式

VRVD10-22



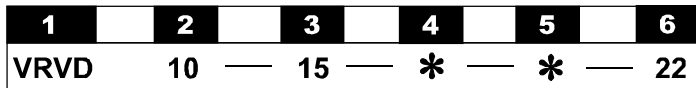
◆ **PERFORMANCE**(Cartridge Only) 特性曲線



◆ **SPECIFICATIONS** 規 格

Model Number 型式號碼	Operating Pressure 操作壓力 bar	Flow 流量 lpm	Weight 重量 Kg
VRVD10-22	340 (4937psi)	70 (18.49 gpm)	2.5 (5.51 lbs)
Fluid Type 流體型式		ISO VG 32, 46, 68	
Viscosity 黏性 cSt		10~400 (59~1854 SSU)	
Operating Temperature 操作溫度 °C		-15~70 (-5~158°F)	
Contamination Level 污染標準		ISO4406, 21/19/16 NAS1638,10	

◆ **HOW TO ORDER** 編號說明



Body Material 閥體材料	Maximum Pressure 最大壓力 bar	Weight 重量 Kg
Aluminum (standard) 鋁 (標準)	240 (3481 psi)	0.66 (1.44 lbs)
Steel 鋼	350 (5076 psi)	1.72 (3.79 lbs)

1 VALVE SERIES 系列名稱

VRVD= CROSS-OVER RELIEF,
DIRECT-ACTING POPPET
雙向溢流閥(直動式)

2 SUBPLATE MOUNTING SIZE 稱呼口徑
10=1/2

3 ADJUSTMENT PRESSURE 壓力調整範圍

Order 編號	Adjustment pressure 壓力調整範圍
08	10 ~ 80 (bar)
15	17 ~ 150 (bar)
24	20 ~ 220 (bar)
34	34 ~ 340 (bar)

4 ADJUSTMENT OPTION 調整選擇

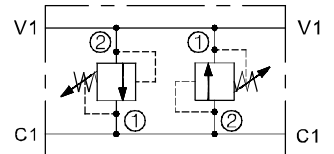
NONE	NONE: TOOL ADJUST 無：工具調整式	
K	K: HAND-BAR ADJUST K：手把調整式	

5 THREADED TYPE 螺紋規格

1P: PT 2N: NPT 3G: PF(G)
4A:SAE 5B:BSP

6 DESIGN NO 設計編號

◆ **CONTROL PORT(S)**
動作形式



◆ **DIMENSIONS**

外型尺寸圖

