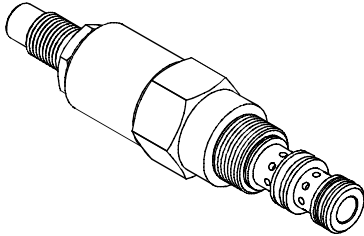


PRESSURE CONTROL VALVES 壓力控制閥

VS SERIES CARTRIDGE TYPE SEQUENCE VALVES vs 系列插入式順序閥

◆ MODEL 型 式

VS-08

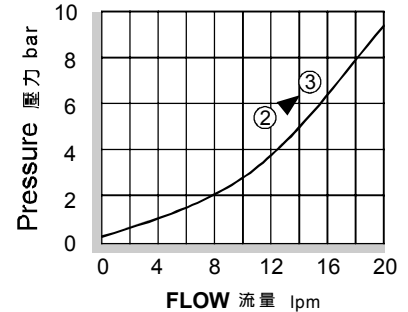


◆ DESCRIPTION 說明

Direct-acting, spool-type, hydraulic sequence valve with external pilot and internal spring chamber drain.
In its steady state, it blocks allows flow from 2 to 3. On attainment of a pre-determined pressure at 1, the cartridge shifts to close 2 to 3. Since the spring chamber is vented at 3, back pressure at 3 will directly (1:1) affect the valve's setting.
直動型滑閥式外控順序閥，內部彈簧室洩油。在穩定狀態下，油從2流向3。當1處的壓力達到閥的預設值，閥芯移動，油從2流向3關閉。因為彈簧室從油口3洩油，所以油口3的背壓力會按1:1影響閥的設定壓力。

◆ PERFORMANCE 特性曲線

Test Conditions 測試條件
Oil Temperature 油溫度: 50°C (122°F)
Viscosity 黏性: 35 cSt (163 SSU)



◆ SPECIFICATIONS 規 格

Model Number 型式號碼	Operating Pressure 操作壓力 bar	Flow 流量 lpm	Weight 重量 Kg
VS-08	240 (3481 psi)	18 (4.76 gpm)	0.3 (0.66 lbs)
Fluid Type 流體型式		ISO VG 32, 46, 68	
Viscosity 黏性 cSt		10~400 (59~1854 SSU)	
Operating Temperature 操作溫度 °C		-15~70 (-5~158°F)	
Contamination Level 污染標準		ISO4406. 21/19/16 NAS1638,10	

◆ HOW TO ORDER 編號說明

1	2	3	4	5
VS	08	*	*	20

1 VALVE SERIES 系列名稱

VS = CARTRIDGE TYPE SEQUENCE VALVES
插入式順序閥

2 SUBPLATE MOUNTING SIZE 稱呼口徑

Size : 08
Cavity 孔口: CS08-3N
See Page Appendixes-A_002
見附錄 A_002 頁面

3 ADJUSTMENT PRESSURE 壓力調整範圍

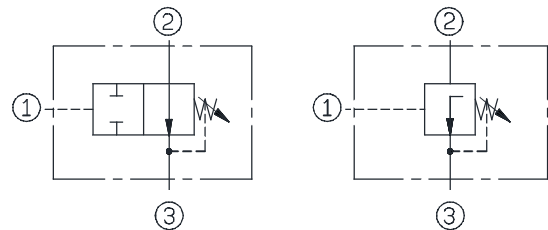
Order 編號	Adjustment pressure 壓力調整範圍
02	4 ~ 20 (bar)
04	7 ~ 40 (bar)
09	11 ~ 89 (bar)
16	21 ~ 165 (bar)

4 ADJUSTMENT OPTION 調整選擇

NONE	NONE: TOOL ADJUST 無: 工具調整式	
K	K: HAND-BAR ADJUST K: 手把調整式	

5 DESIGN NO 設計編號

◆ CONTROL PORT(S) 動作形式



◆ DIMENSIONS 外型尺寸圖

