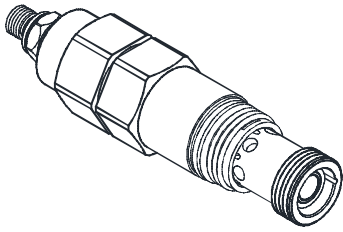


# PRESSURE CONTROL VALVES 壓力控制閥

## VSCB SERIES CARTRIDGE TYPE CHECK SEQUENCE VALVES (DIRECT ACTING TYPE) VSCB 插入式止逆順序閥(直動型)

### ◆ MODEL 型式 VSCB-5A

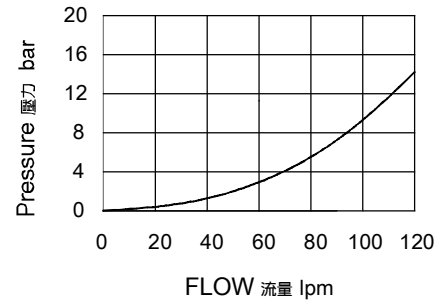


### ◆ DESCRIPTION 說明

Atmospherically referenced, direct-acting sequence valves will supply a secondary circuit with flow once the pressure at the inlet (port 1) has exceeded the valve setting. these valves incorporate an integral check valve to provide reverse flow from port 2 (sequence) to port 1 (inlet). Atmospherically referenced valves should only be used where it is impossible have a drain connection.

透氣型，直動式順序閥將在進口（口1）壓力超過閥的設定之後向次級油路供油。此類閥內部整合單向閥，可提供從口2（順序口）到口1（進口）逆向液流。透大氣閥只用在不能連接外洩口的應用。

### ◆ PERFORMANCE 特性曲線



### ◆ SPECIFICATIONS 規格

Model Number 型式號碼	Maximum Pressure 最大壓力 bar	Maximum Flow 最大流量 lpm	Weight 重量 Kg
VSCB-5A	350 (5076 psi)	120 (31.70 gpm)	0.42 (0.93 lbs)
<b>Fluid Type</b> 流體型式		ISO VG 32, 46, 68	
<b>Viscosity</b> 黏性 cSt		10~400 (59~1854 SSU)	
<b>Operating Temperature</b> 操作溫度 °C		-30~100 (-22~212°F)	
<b>Contamination Level</b> 污染標準		ISO4406. 21/19/16 NAS1638,10	

### ◆ HOW TO ORDER 編號說明

<b>1</b>	<b>2</b>	<b>3</b>	<b>4</b>
VSCB	5A	— *	— *

#### 1 VALVE SERIES 系列名稱

VSCB = Cartridge Type Check Sequence Valves  
(Direct Acting Type / Atmospherically Referenced)  
插入式止逆順序閥(直動式/大氣參考)

#### 2 SUBPLATE MOUNTING SIZE: 稱呼口徑

5A :T-5A  
Cavity 孔口:CST-5A  
See Appendixes-A 見附錄A  
For Manifold See Appendixes-B  
油路板見附錄B

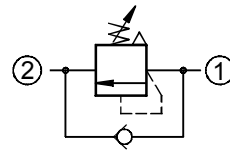
#### 3 ADJUSTMENT PRESSURE 壓力調整範圍

Code 編碼	Adjustment pressure 壓力調整範圍
05	14 ~ 55 (bar)
10	20 ~ 105 (bar)
20	35 ~ 210 (bar)
30	55 ~ 315 (bar)
40	140 ~ 420 (bar)

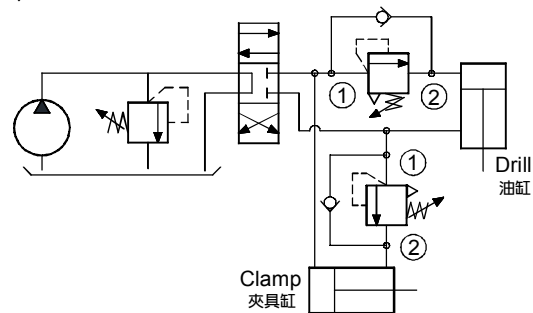
#### 4 ADJUSTMENT OPTION 調整選擇

NONE	NONE:TOOL ADJUST 無：工具調整式	
C	C:TAMPER RESISTANT COVER C：防調封蓋	
K	K:HAND-BAR ADJUST K：手把調整式	

### ◆ CONTROL PORT(S) 動作形式



### ◆ APPLICATION 運用



### ◆ DIMENSIONS 外型尺寸圖

