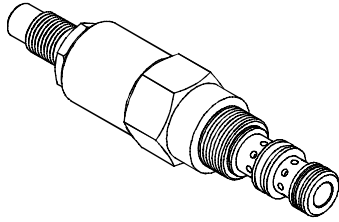


◆ MODEL 型 式

VSQ-08

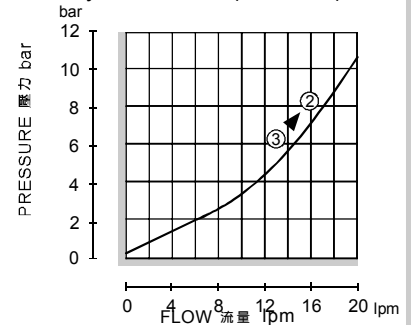


◆ DESCRIPTION 說明

Direct-acting, Spool-type, hydraulic sequence valve with external pilot and internal spring chamber drain.
 In its steady state, it blocks flow from 3 to 2. On attainment of a pre-determined pressure at 1, the cartridge shifts to open 3 to 2. Since the spring chamber is vented at 2, back pressure at 2 will directly (1:1) affect the valve's setting.
 直動型滑閥式外控順序閥，內部彈簧室洩油。
 在穩定狀態下，油從3流向2封閉。當1處的壓力達到閥的預設值，閥芯移動，油從3流向2。因為彈簧室從油口2洩油，所以油口2的背壓力會按1:1影響閥的設定壓力。

◆ PERFORMANCE 特性曲線

Test Conditions 測試條件
 Oil Temperature 油溫度: 50°C (122°F)
 Viscosity 黏性: 35 cSt (163 SSU)



◆ SPECIFICATIONS 規 格

Model Number 型式號碼	Operating Pressure 操作壓力 bar	Flow 流量 lpm	Weight 重量 Kg
VSQ-08	350 (5076 psi)	18 (4.76 gpm)	0.3 (0.66 lbs)
Fluid Type 流體型式		ISO VG 32, 46, 68	
Viscosity 黏性 cSt		10~400 (59~1854 SSU)	
Operating Temperature 操作溫度 °C		-30~100 (-22~212°F)	
Contamination Level 污染標準		ISO4406. 21/19/16 NAS1638,10	

◆ HOW TO ORDER 編號說明

1	2	3	4	5
VSQ	08	*	*	20

1 VALVE SERIES 系列名稱

VSQ = CARTRIDGE UNLOADING VALVES
 插入式卸載閥

2 SUBPLATE MOUNTING SIZE 稱呼口徑

Size : 08
 Cavity 孔口 : CS08-3N
 See Page Appendixes-A_002
 見附錄A_002 頁面

3 ADJUSTMENT PRESSURE 壓力調整範圍

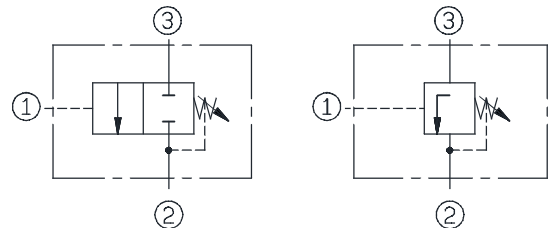
Code 編碼	Adjustment pressure 壓力調整範圍
02	4 ~ 20 (bar)
04	7 ~ 40 (bar)
09	11 ~ 89 (bar)
16	21 ~ 165 (bar)

4 ADJUSTMENT OPTION 調整選擇

NONE	NONE:TOOL ADJUST 無：工具調整式	
K	K:HAND-BAR ADJUST K：手把調整式	
K1	K1:HAND-BAR ADJUST K1：手把調整式	
C	C: COVER CAP C：帶螺帽蓋	

5 DESIGN NO 設計編號

◆ CONTROL PORT(S) 動作形式



◆ DIMENSIONS 外型尺寸圖

