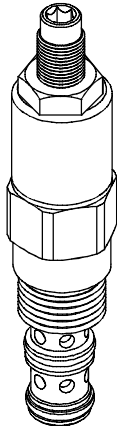


◆ **MODEL 型 式**
VSQA-10

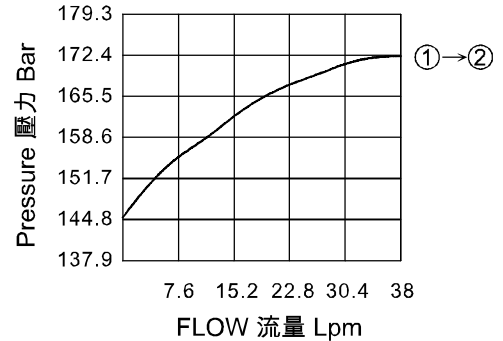


◆ **DESCRIPTION 說明**

A direct-acting hydraulic sequence valve with internal pilot and spring chamber drain, designed to direct flow to a secondary circuit once a pre-determined pressure level is attained in the primary circuit. In its steady state, the VSQA-10 blocks flow at ①, while allowing flow to pass from ② to ③. On attainment of a pre-determined pressure at ①, the cartridge shifts to open ① to ③. 直動型內控順序閥, 內部彈簧室泄油, 當主回路壓力達到預設值時, 油液直接流向二級回路. VSQA-10型, 在穩定狀態下, 油液在①處封閉, 同時允許油液從②流向③流動. 當①處的壓力達到閥的預設值, 閥芯移動, 油液從①流向③.

◆ **PERFORMANCE 特性曲線**

Test Conditions 測試條件
Oil Temperature 油溫度: 40°C (104°F)
Viscosity 黏性: 32 cSt (150 SSU)



◆ **SPECIFICATIONS 規 格**

Model Number 型式號碼	Operating Pressure 操作壓力 bar	Flow 流量 lpm	Weight 重量 Kg
VSQA-10	240 (3481 psi)	38 (10.04 gpm)	0.35 (0.77 lbs)
Fluid Type 液體型式		ISO VG 32, 46, 68	
Viscosity 黏性 cSt		10~400 (59~1854 SSU)	
Operating Temperature 操作溫度 °C		-15~70 (-5~158 °F)	
Contamination Level 污染標準		ISO4406. 21/19/16 NAS1638,10	

◆ **HOW TO ORDER 編號說明**

1	2	3	4	5
VSQA	10	— *	— *	— 20

1 VALVE SERIES 系列名稱

VSQA = SEQUENCE, INTERNAL PILOT & DRAIN VALVES
插入式內控順序閥

2 SUBPLATE MOUNTING SIZE 稱呼口徑

Size: 10
Cavity 孔口: CS10-3N
See Page Appendixes-A_002
見附錄A_002 頁面

3 ADJUSTMENT PRESSURE 壓力調整範圍

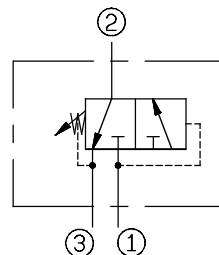
Order 編號	Adjustment pressure 壓力調整範圍
02	3 ~ 27 (bar)
14	14 ~ 145 (bar)

4 ADJUSTMENT OPTION 調整選擇

NONE	NONE: TOOL ADJUST 無: 工具調整式	
K	K: HAND-BAR ADJUST K: 手把調整式	

5 DESIGN NO 設計編號

◆ **CONTROL PORT(S) 動作形式**



◆ **DIMENSIONS 外型尺寸圖**

