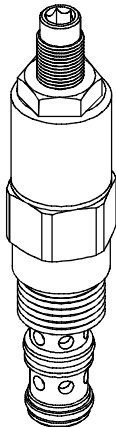


◆ **MODEL 型 式**
VSQB-10

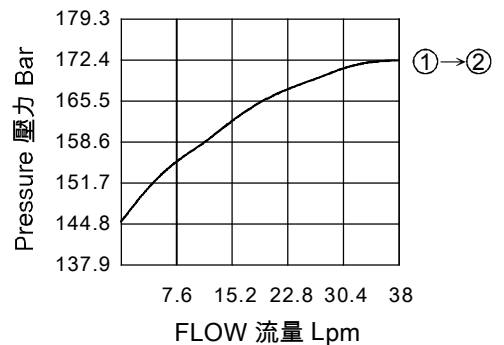


◆ **DESCRIPTION 說明**

A direct-acting hydraulic sequence valve with internal pilot and spring chamber drain.
In its steady state, the VSQB-10 blocks flow at ① to ②, while the spring chamber drained at ③.
On attainment of a predetermined pressure at ①, the cartridge shifts to open ① to ②.
Note that back-pressure on ③ adds to the spring setting value.
直動型內控順序閥, 內部彈簧室泄油。
VSQB-10型, 在穩定狀態下, 油液從①流向②封閉, 彈簧室從③泄油, 當①處的壓力達到閥的預設值, 閥芯移動, 油液從①流向②。油口③處的背壓力會加到壓力設定值上。

◆ **PERFORMANCE 特性曲線**

Test Conditions 測試條件
Oil Temperature 油溫度: 40°C (104°F)
Viscosity 黏性: 32 cSt (150 SSU)



◆ **SPECIFICATIONS 規 格**

Model Number 型式號碼	Operating Pressure 操作壓力 bar	Flow 流量 lpm	Weight 重量 Kg
VSQB-10	240 (3481 psi)	38 (10.04 gpm)	0.35 (0.77 lbs)
Fluid Type 流體型式		ISO VG 32, 46, 68	
Viscosity 黏性 cSt		10~400 (59~1854 SSU)	
Operating Temperature 操作溫度 °C		-30~100 (-22~212°F)	
Contamination Level 污染標準		ISO4406. 21/19/16 NAS1638,10	

◆ **HOW TO ORDER 編號說明**

1	2	3	4	5
VSQB	10	*	*	20

1 VALVE SERIES 系列名稱

VSQB = CARTRIDGE TYPE SEQUENCE VALVES, INTERNAL PILOT&DRAIN.
插入式順序閥, 內控內泄

2 SUBPLATE MOUNTING SIZE 稱呼口徑

Size : 10
Cavity 孔口: CS10-3N
See Page Appendixes-A_002
見附錄A_002 頁面

3 ADJUSTMENT PRESSURE 壓力調整範圍

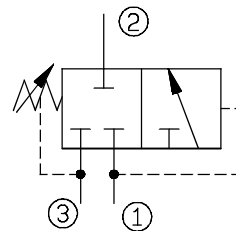
Code 編碼	Adjustment pressure 壓力調整範圍
02	3 ~ 27 (bar)
08	11 ~ 85 (bar)
14	14 ~ 145 (bar)

4 ADJUSTMENT OPTION 調整選擇

NONE	NONE: TOOL ADJUST 無: 工具調整式	
K	K: HAND-BAR ADJUST K: 手把調整式	

5 DESIGN NO 設計編號

◆ **CONTROL PORT(S) 動作形式**



◆ **DIMENSIONS 外型尺寸圖**

