

# FLOW CONTROL VALVES 流量控制閥

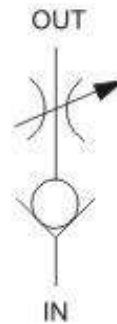
## FCA SERIES CARTRIDGE CHECK THROTTLE VALVES FCA 系列插入式止逆節流閥

### ◆ MODEL 型 式

FCA



### ◆ CONTROL PORT(S) 動作形式



### ◆ SPECIFICATIONS 規 格

Model Number 型式號碼	Operating Pressure 操作壓力 bar	Cracking 壓力 kg/cm <sup>2</sup>	Flow 流量 lpm	Weight 重量 Kg
FCA-02	250 (3626 psi)	0.3	30 (7.93 gpm)	0.2 (0.45 lbs)
FCA-03			80 (21.13 gpm)	0.5 (1.13 lbs)
FCA-06			160 (42.27 gpm)	0.8 (1.8 lbs)
Fluid Type 液體型式			ISO VG 32, 46, 68	
Viscosity 黏性 cSt			10~400 (59~1854 SSU)	
Operating Temperature 操作溫度 °C			-15~70 (-5~158°F)	
Contamination Level 污染標準			ISO4406, 21/19/16 NAS1638,10	

### ◆ HOW TO ORDER 編號說明

1	2	3	4
FCA	03	A	10

#### 1 VALVE SERIES 系列名稱

FCA= CARTRIDGE CHECK THROTTLE VALVES  
插入式止逆節流閥

#### 2 SUBPLATE MOUNTING SIZE 補焊口徑

02(1/2), 03(3/8), 06(3/4)

#### 3 CRACKING 壓力

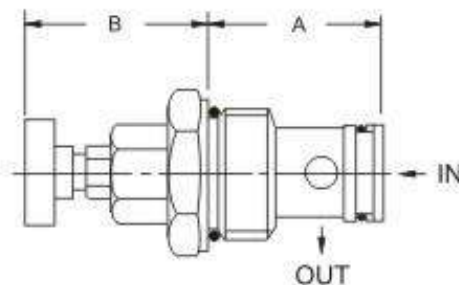
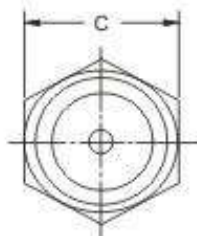
A: 0.3kg/cm<sup>2</sup>  
B: 1kg/cm<sup>2</sup>

#### 4 DESIGN NO 設計編號

### ◆ DIMENSIONS 外型尺寸圖

Cartridge Cavities  
See VCA Series

插入閥孔徑 見 VCA 系列



Model 型式	Size 尺寸	A	B	C
FCA-02		35	32	28
FCA-03		48	46	41
FCA-06		60	46	46