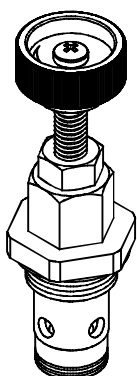
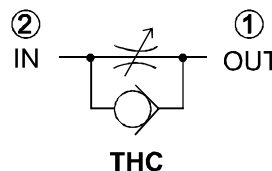
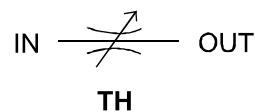


◆ **MODEL 型 式**

TH  
THC



◆ **CONTROL PORT(S) 動作形式**



◆ **SPECIFICATIONS 規 格**

Model Number 型式號碼	Operating Pressure 操作壓力 bar	Flow 流量 lpm	Weight 重量 Kg
TH*-03	250 (3626psi)	80 (21.13 gpm)	0.4 (0.9 lbs)
TH*-06		160 (42.27 gpm)	0.6 (1.3 lbs)
<b>Fluid Type</b> 流體型式		ISO VG 32 , 46 , 68	
<b>Viscosity</b> 黏性 cSt		10~400 (59~1854 SSU)	
<b>Operating Temperature</b> 操作溫度 °C		-15~70 (-5~158 °F)	
<b>Contamination Level</b> 污染標準		ISO4406. 21/19/16 NAS1638,10	

◆ **HOW TO ORDER 編號說明**

1	2	3
TH *	03	10

**1 VALVE SERIES** 系列名稱

TH= CARTRIDGE THROTTLE VALVES  
插入式單向節流閥

THC= CARTRIDGE CHECK THROTTLE VALVES  
插入式單向止逆節流閥

**2 SUBPLATE MOUNTING SIZE** 稱呼口徑  
03(3/8) , 06(3/4)

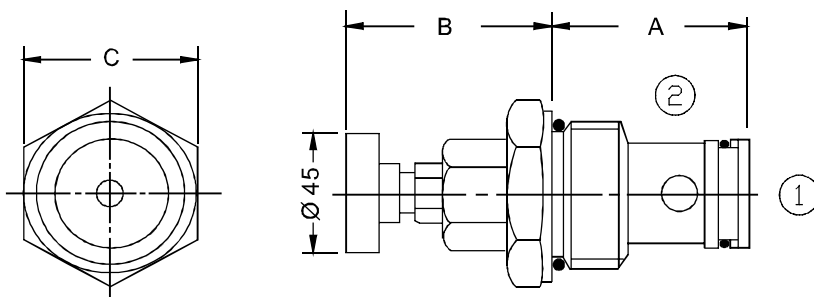
**3 DESIGN NO** 設計編號

◆ **DIMENSIONS 外型尺寸圖**

**Cartridge Cavities**

**See VCA Series**

插入閥孔徑 見 VCA 系列



Model 型式	A	B	C
TH*-03	48	60	41
TH*-06	60	64	50