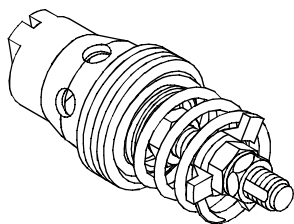


### MODEL 型式 VAF-14 / 38 / 12 / 34



#### DESCRIPTION-OPERATION :

Use this valve as a pressure-compensation throttling valve of descending control, which sustains a constant descending speed of loading although the loading fluctuation might be significant; user can adjust the distance and preset the passing flow rate.

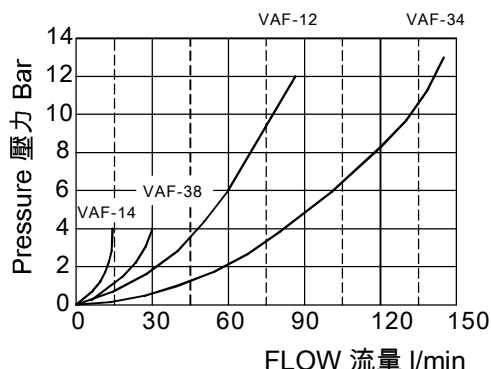
#### 操作說明:

此閥應用在下降控制,當作壓力補償節流閥,可以保持負載的下降速度一定,盡管負載的重量變化相當大,可以調整距離,預先設定通過流量。

### PERFORMANCE(Cartridge Only)

特性曲線

#### Pressure Drop 壓力降 R-E



### SPECIFICATIONS 規格

Model Number 型式號碼	Maximum Pressure 最大壓力 bar	Maximum Flow 最大流量 lpm	Weight 重量 Kg
VAF-14	315 ( 4569 psi)	10 ( 2.64 gpm)	0.012 (0.026 lbs)
VAF-38	315 ( 4569 psi)	25 ( 6.60 gpm)	0.023 (0.051 lbs)
VAF-12	315 ( 4569 psi)	67 ( 17.70 gpm)	0.037 (0.082 lbs)
VAF-34	315 ( 4569 psi)	150 ( 39.63 gpm)	0.072 (0.159 lbs)
<b>Fluid Type 流體型式</b>		ISO VG 32 , 46 , 68	
<b>Viscosity 黏性 cSt</b>		10~400 (59~1854 SSU)	
<b>Operating Temperature 操作溫度 °C</b>		-30~100 (-22~212°F)	
<b>Contamination Level 污染標準</b>		ISO4406. 20/18/15 NAS1638. 9	

### HOW TO ORDER 編號說明

<b>1</b>	<b>2</b>	<b>3</b>
VAF	— 14 —	02

#### 1 VALVE SERIES 系列名稱

VAF= Pressure Compensated Throttle Valves  
壓力補償節流閥

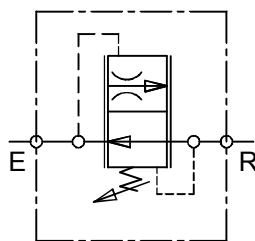
#### 2 SUBPLATE MOUNTING SIZE 稱呼口徑

14=G 1/4" 12=G 1/2"  
38=G 3/8" 34=G 3/4"

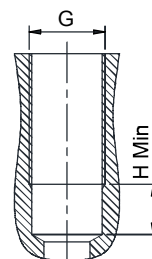
#### 3 REGULATED FLOW RANGE 流量調整範圍

SPECIFICATIONS 規格	REGULATED FLOW RANGE 流量調整範圍			
	14	38	12	34
01	1~1.6	2.5~4.0	16~21	37~50
02	1.6~2.5	4.0~6.3	21~28	50~67
03	2.5~4.0	6.3~10	28~37	67~90
04	4.0~6.3	10~16	37~50	90~120
05	6.3~10	16~25	50~67	120~150
06	-	-	-	-

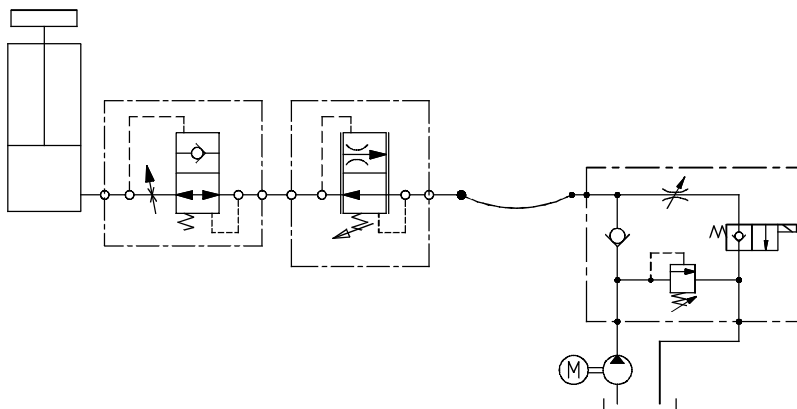
### CONTROL PORT(S) 動作形式



### CAVITIES DIMENSIONS 孔口尺寸

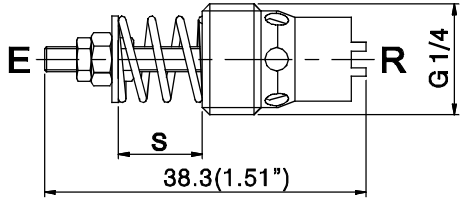


Type	G	H
G14	G1/4"	22(0.87")
G38	G3/8"	23(0.91")
G12	G1/2"	27(1.06")
G34	G3/4"	31(1.22")

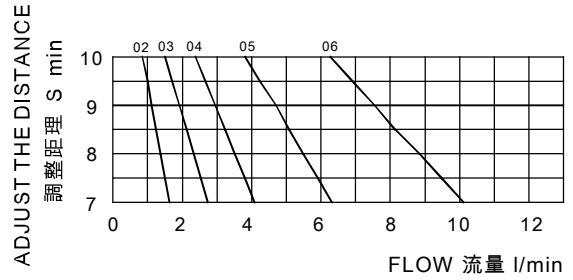


◆ **DIMENSIONS** 外型尺寸圖

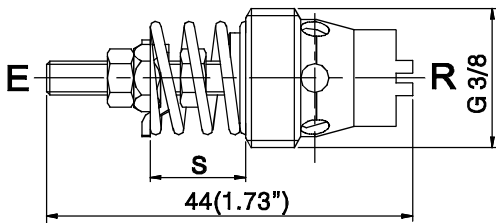
**VAF-14**



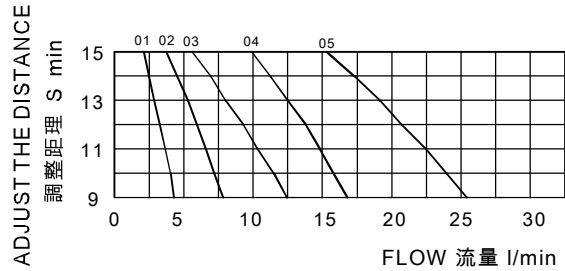
OPERATING PRESSURE 50 bar  
操作壓力 50bar



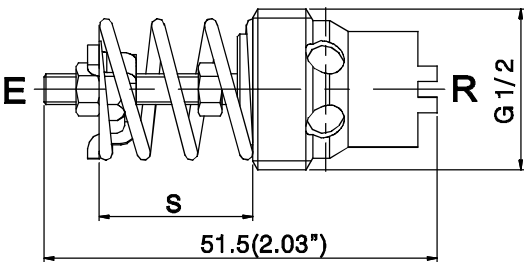
**VAF-38**



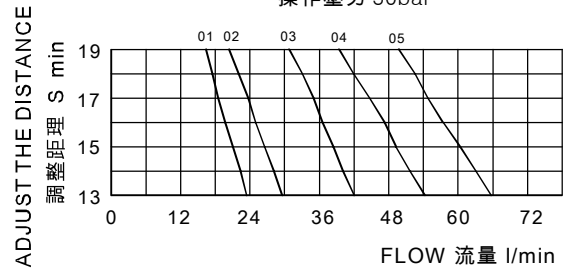
OPERATING PRESSURE 50 bar  
操作壓力 50bar



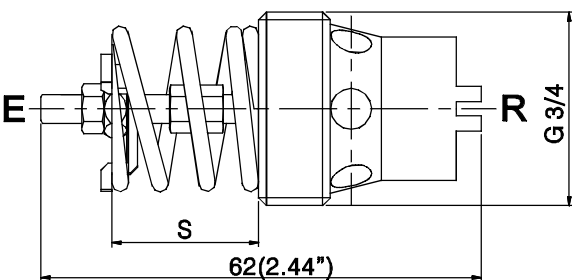
**VAF-12**



OPERATING PRESSURE 50 bar  
操作壓力 50bar



**VAF-34**



OPERATING PRESSURE 50 bar  
操作壓力 50bar

