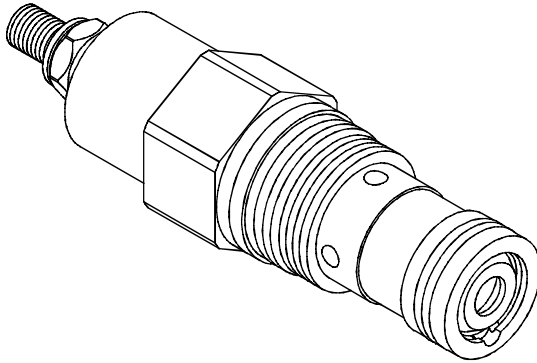


# FLOW CONTROL VALVES 流量控制閥

## VCF SERIES FULLY ADJUSTABLE PRESSURE COMPENSATED WITH REVERSE FLOW CHECK VCF 系列全調型壓補流量閥

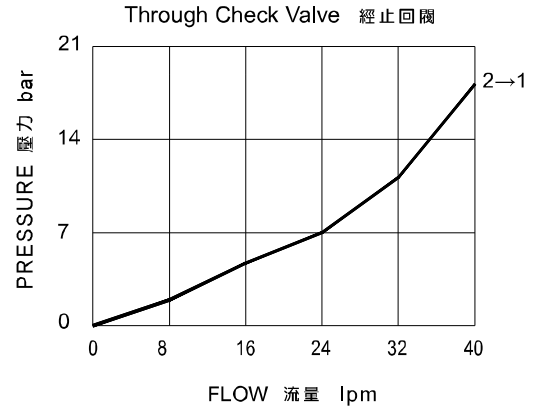
### MODEL 型式

VCF-02



### PERFORMANCE (Cartridge Only)

特性曲線



### SPECIFICATIONS 規格

| Model Number<br>型式號碼                 | Maximum Pressure<br>最大壓力 bar | Maximum Flow<br>最大流量 Lpm     | Control Flow<br>控制流量 Lpm | Weight<br>重量 Kg |
|--------------------------------------|------------------------------|------------------------------|--------------------------|-----------------|
| VCF-02                               | 350 (5076 psi)               | 35 (9.25 gpm)                | 0.4~25 (0.11~6.60 gpm)   | 0.15 (0.33 lbs) |
| <b>Fluid Type</b> 流體型式               |                              | ISO VG 32,46,68              |                          |                 |
| <b>Viscosity</b> 黏性 cSt              |                              | 10~400 (59~1854SSU)          |                          |                 |
| <b>Operating Temperature</b> 操作溫度 °C |                              | -30~100 (-22~212°F)          |                          |                 |
| <b>Contamination Level</b> 污染標準      |                              | ISO4406. 21/19/16 NAS1638,10 |                          |                 |

### HOW TO ORDER 編號說明

| 1   | 2  | 3 |
|-----|----|---|
| VCF | 02 | * |

#### 1 VALVE SERIES 系列名稱

VCF= Fully Adjustable Pressure Compensated  
With Reverse Flow Check  
(Unidirectional Valves Included)  
全調型壓補流量閥 (附單向閥)

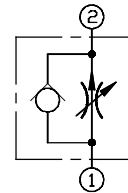
#### 2 SUBPLATE MOUNTING SIZE 稱呼口徑

02: T-13A  
Cavity 孔口: CST-13A  
See Page Appendixes-A\_006  
見附錄A\_006 頁面

#### 3 ADJUSTMENT OPTION 調整選擇

|      |   |  |
|------|---|--|
| NONE | NONE: TOOL ADJUST<br>無: 工具調整式                           |  |
| K    | K: HAND-BAR ADJUST<br>K: 手把調整式                          |  |
| KT   | KT: HAND-BAR ADJUST<br>(Three-winged)<br>KT: 手把調整式 (三翼) |  |

### CONTROL PORT(S) 動作形式



### DIMENSIONS 外型尺寸圖

