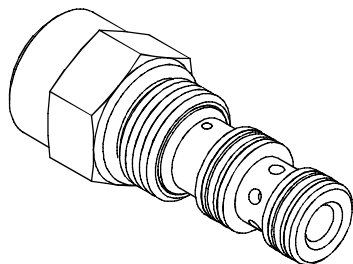


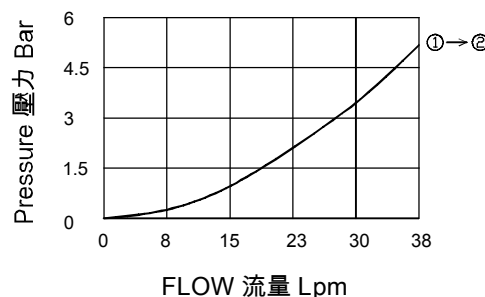
◆ **MODEL** 型 式
VEC-08



◆ **DESCRIPTION** 說明

When pressure at ① rises above the selected spring bias pressure against the spool, the valve shifts to allow flow from ① to ②. Pilot pressure at ③ is additive to the spring bias pressure. The valve may be used in switching or compensation type applications.
當①中的壓力上升到超過彈簧開啟壓力, 閥芯移動允許從①到②流動。③中的先導壓力附加到彈簧壓力上。這個閥可以應用在開關或者補償之類的場合。

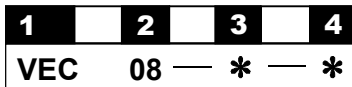
◆ **PERFORMANCE**(Cartridge Only)
特性曲線



◆ **SPECIFICATIONS** 規 格

| Model Number 型式號碼 | Maximum Pressure 最大壓力 bar | Ratio Of Poppet Area 面積比 | Maximum Flow 最大流量 lpm | Weight 重量 Kg |
|--------------------------------------|------------------------------|-----------------------------|------------------------------|-----------------|
| VEC-08 | 350 (5076psi) | 1 : 1 | 38 (10.04 gpm) | 0.11 (0.25 lbs) |
| Fluid Type 流體型式 | | | ISO VG 32 , 46 , 68 | |
| Viscosity 黏性 cSt | | | 10~400 (59~1854 SSU) | |
| Operating Temperature 操作溫度 °C | | | -30~100 (-22~212°F) | |
| Contamination Level 污染標準 | | | ISO4406. 21/19/16 NAS1638,10 | |

◆ **HOW TO ORDER** 編號說明



1 VALVE SERIES 系列名稱
VEC=CARTRIDGE THROTTLE VALVES
(Pressure Compensated Included)
插入式節流閥(附壓力補償)

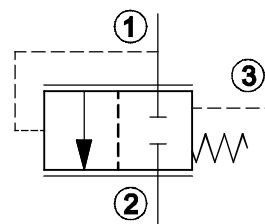
2 SUBPLATE MOUNTING SIZE 稱呼口徑
Size :08
Cavity 孔口:CS08-3N
See Page Appendixes-A_002
見附錄A_002頁面

3 ADJUSTMENT PRESSURE 壓力調整範圍

| Fixed pressure 固定壓力 | Code 編碼 | Cracking pressure 彈簧壓力 |
|-----------------------------------------------|------------|---------------------------|
| | 05 | 0.5 (bar) |
| | 20 | 2.8 (bar) |
| | 50 | 5.0 (bar) |
| | 100 | 10.5 (bar) |
| Spring pressure tolerance ±15% 彈簧壓力公差值±15% | | |

4 DESIGN NO 設計編號

◆ **CONTROL PORT(S)**
動作形式



◆ **DIMENSIONS**
外型尺寸圖

