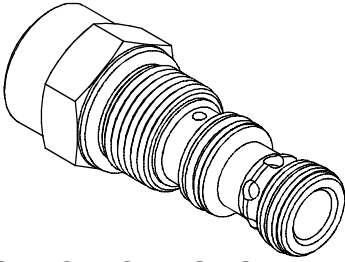


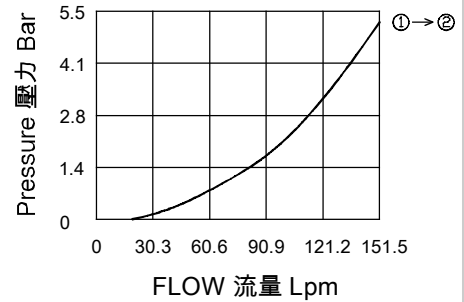
MODEL 型式 VEC-12A



DESCRIPTION 說明

When pressure at ① rises above the selected spring bias pressure against the spool, the valve shifts to allow flow from ① to ②. Pilot pressure at ③ is additive to the spring bias pressure. The valve may be used in switching or compensation type applications. 當①中的壓力上升到超過彈簧開啟壓力, 閥芯移動允許從①到②流動。③中的先導壓力附加到彈簧壓力上。這個閥可以應用在開關或者補償之類的場合。

PERFORMANCE (Cartridge Only) 特性曲線



SPECIFICATIONS 規格

Model Number 型式號碼	Maximum Pressure 最大壓力 bar	Ratio Of Poppet Area 面積比	Maximum Flow 最大流量 lpm	Weight 重量 Kg
VEC-12A	350 (5076psi)	1 : 1	131 (34.61 gpm)	0.23 (0.51 lbs)
Fluid Type 流體型式		ISO VG 32, 46, 68		
Viscosity 黏性 cSt		10~400 (59~1854 SSU)		
Operating Temperature 操作溫度 °C		-30~100 (-22~212°F)		
Contamination Level 污染標準		ISO4406. 21/19/16 NAS1638,10		

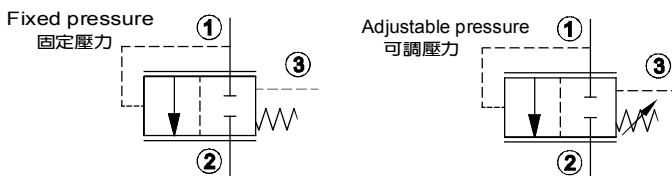
HOW TO ORDER 編號說明

1	2	3	4
VEC	12A	— * — *	

1 VALVE SERIES 系列名稱

VEC=CARTRIDGE THROTTLE VALVES
(Pressure Compensated Included)
插入式節流閥(附壓力補償)

CONTROL PORT(S) 動作形式



2 SUBPLATE MOUNTING SIZE 稱呼口徑

Size :12A

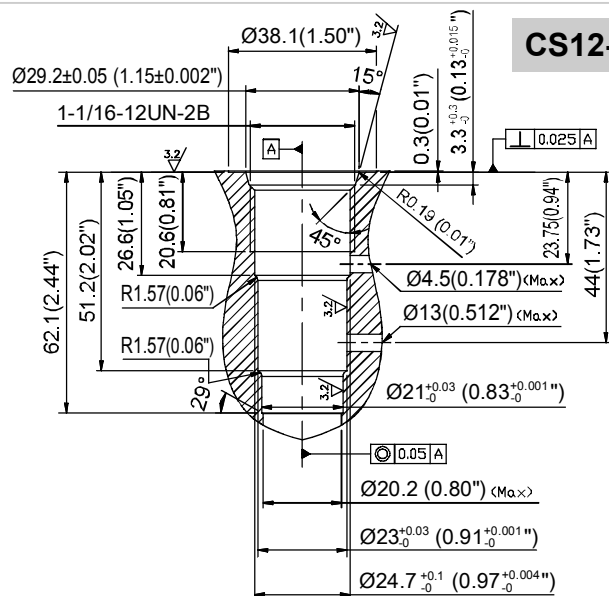
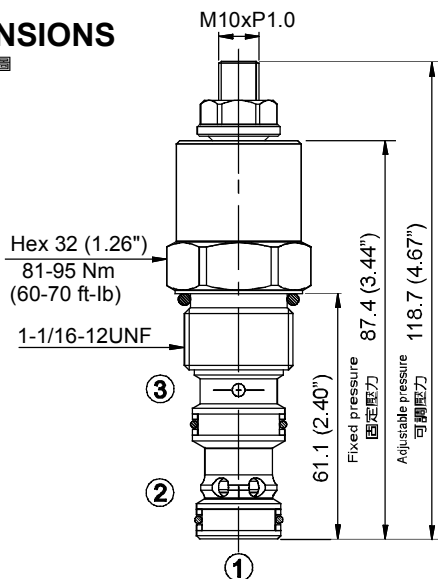
Cavity 孔口:CS12-3A

3 ADJUSTMENT PRESSURE 壓力調整範圍

Fixed pressure 固定壓力	Code 編碼	Cracking pressure 彈簧壓力	
	05	0.5 (bar)	
20	2.8 (bar)		
	50	5.0 (bar)	
110	11 (bar)		
	Spring pressure tolerance ±15% 彈簧壓力公差值 ± 15%		
Adjustable pressure 可調壓力	Code 編碼	Adjustment pressure 壓力調整範圍	
	M15	0.5 ~ 11 (bar)	

4 DESIGN NO 設計編號

DIMENSIONS 外型尺寸圖



CS12-3A