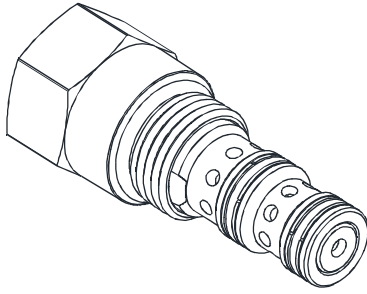
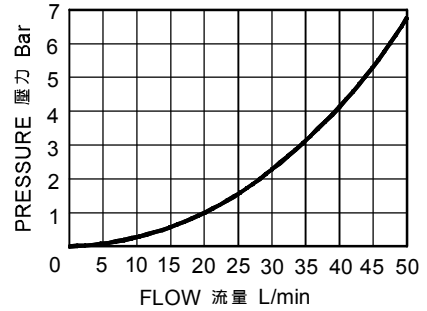


◆ **MODEL 型 式**
VECP-10



◆ **PERFORMANCE(Cartridge Only)**
特性曲線



◆ **DESCRIPTION 說 明**

Spool-type, normally closed, hydraulic directional valve for two way circuits requiring remote pilot actuation. In neutral, it blocks flow from 3 to 2 bidirectionally. The spring bias chamber is internally vented to 3. On remote pilot signal at 1, the valve shifts to open 2 to 3 unidirectionally.

滑閥式，常閉型液控方向閥。用於遙控二通油路。在中位時雙向截止油從3向2流動。彈簧室內部接通3。當遠端液控訊號到達1時，閥芯移動，2流向3單向接通。

◆ **SPECIFICATIONS 規 格**

Model Number 型式號碼	Maximum Pressure 最大壓力 bar	Maximum Flow 最大流量 Lpm	Weight 重量 Kg
VECP-10	350 (5076 psi)	50 (13.20 gpm)	0.2 (0.55 lbs)
Fluid Type 流體型式		ISO VG 32,46,68	
Viscosity 黏性 cSt		10~400 (59~1854SSU)	
Operating Temperature 操作溫度 °C		-15~70 (-5~158°F)	
Contamination Level 污染標準		ISO4406. 21/19/16 NAS1638,10	

◆ **HOW TO ORDER 編號說明**

1	2	3
VECP	10	— 50

1 VALVE SERIES 系列名稱

VECP= CARTRIDGE DIRECT ACTING EXTERNAL PILOT EXTERNAL VENT VALVES

插入式液控方向閥

2 SUBPLATE MOUNTING SIZE 稱呼口徑

Size : 10

Cavity 孔口:CS10-3N

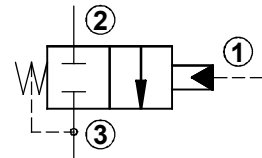
See Page Appendixes-A_002

見附錄A_002頁面

3 ADJUSTMENT PRESSURE 壓力調整範圍

Order 編號	Adjustment pressure 壓力調整範圍
50	5.5 (bar)
110	11.5 (bar)

◆ **CONTROL PORT(S) 動作形式**



◆ **DIMENSIONS 外型尺寸圖**

