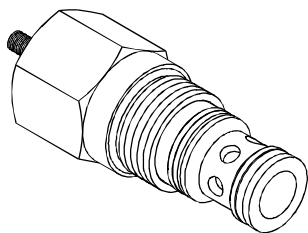


◆ **MODEL** 型 式
VEO-10

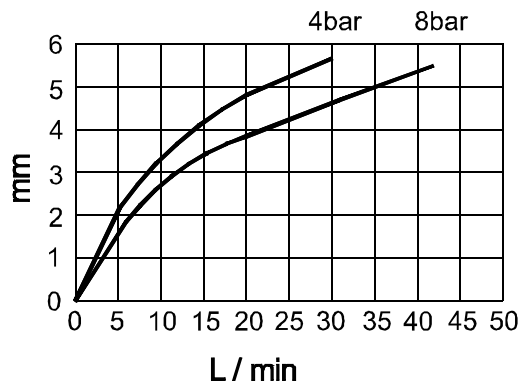


◆ **DESCRIPTION** 說明

When pressure at ① rises above the selected spring bias pressure against the spool, the valve shifts to allow block from ② to ①. Pilot pressure at ③ is additive to the spring bias pressure. The valve may be used in switching or compensation type applications, and will maintain a constant pressure drop across a fixed (or variable) orifice downstream of ① when installed and piloted per the diagram under.

當①中的壓力上升到超過所選閥芯的彈簧設定壓,閥會移動切換油口,①、②截斷。③中的先導壓力附加彈簧上。這個閥可以用在開關或者補償形式的應用中,並且按照下面的圖表安裝,油口①下方固定節流口可保持恆定壓降。

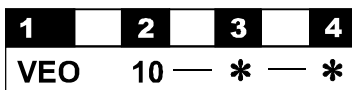
◆ **PERFORMANCE**(Cartridge Only)
特性曲線



◆ **SPECIFICATIONS** 規 格

Model Number 型式號碼	Maximum Pressure 最大壓力 bar	Maximum Flow 最大流量 lpm	Weight 重量 Kg
VEO-10	350 (5076 psi)	30 (7.93 gpm)	0.2(0.55 lbs)
Fluid Type 流體型式		ISO VG 32 , 46 , 68	
Viscosity 黏性 cSt		10~400 (59~1854 SSU)	
Operating Temperature 操作溫度 °C		-15~70 (-5~158 °F)	
Contamination Level 污染標準		ISO4406. 21/19/16 NAS1638,10	

◆ **HOW TO ORDER** 編號說明



1 **VALVE SERIES** 系列名稱

VEO=CARTRIDGE THROTTLE VALVES
(Pressure Compensated Included)
插入式節流閥(附壓力補償)

2 **SUBPLATE MOUNTING SIZE** 稱呼口徑

Size :10
Cavity 孔口:CS10-3S
See Page Appendixes-A_003
見附錄A_003頁面

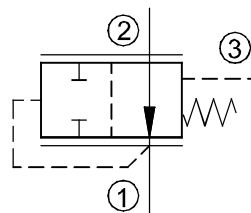
3 **ADJUSTMENT PRESSURE** 壓力調整範圍

Order 編號	Adjustment pressure 壓力調整範圍
05	2 ~ 8 (bar)

4 **DESIGN NO** 設計編號

◆ **CONTROL PORT(S)**

動作形式



◆ **DIMENSIONS**

外型尺寸圖

