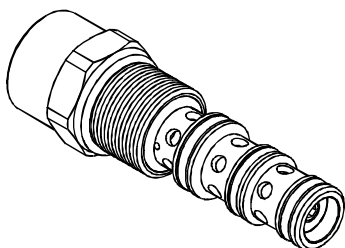
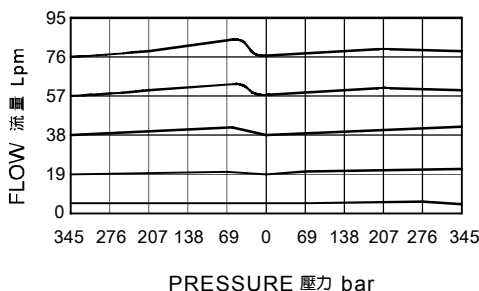


◆ **MODEL 型 式**
VEOF-12



◆ **PERFORMANCE 特性曲線**



◆ **DESCRIPTION 說明**

Pressure compensator with dynamic load sense intended to provide priority flow in the required amount , while allowing excess flow to be used for auxiliary functions.

With inlet flow at port ③ , will deliver required priority flow at port ④ , based on the size of the external orifice , regardless of load pressure . Excess flow exits , or is bypassed, at port ② . Port ① is the load sense port . All ports may be fully pressurized.

具有動態負載感應的壓力補償,用於優先提供需求流量,同時將剩餘的流量用作輔助功能。

油口③進油後,基於外部節流孔的大小,優先輸送必需的流量到④,不受負載壓力變化的影響,剩餘油量流向油口②,①是負載傳感油口,所有油口可以完全受壓。

◆ **SPECIFICATIONS 規 格**

Model Number 型式號碼	Operating Pressure 操作壓力 bar	Flow 流量 lpm	Weight 重量 Kg
VEOF-12	350 (5000 psi)	95 (25.09 gpm)	0.45 (0.99 lbs)
Fluid Type 流體型式		ISO VG 32 , 46 , 68	
Viscosity 黏性 cSt		10~400 (59~1854 SSU)	
Operating Temperature 操作溫度 °C		-15~70 (-5~158 °F)	
Contamination Level 污染標準		ISO4406. 21/19/16 NAS1638,10	

◆ **HOW TO ORDER**

編號說明

1	2	3
VEOF	12	*

1 VALVE SERIES 系列名稱

VEOF =
CARTRIDGE TYPE PRESSURE COMPENSATOR,
HIGH PRESSURE WITH DYNAMIC LOAD SENSE VALVES
插入式動態負載感應壓力補償閥

2 SUBPLATE MOUNTING SIZE 稱呼口徑

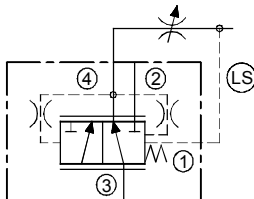
Size:12
Cavity 孔口 : CS12-4N
See Page Appendixes-A_004
見附錄A_004 頁面

3 COMPENSATOR SPRING 補償壓力範圍

50 : 5.5 bar
100 : 10.3 bar

◆ **CONTROL PORT(S)**

動作形式



◆ **DIMENSIONS**

外型尺寸圖

