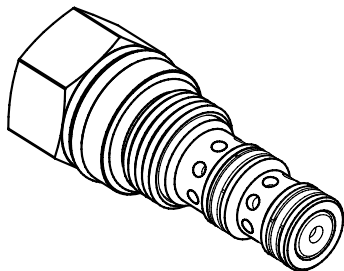


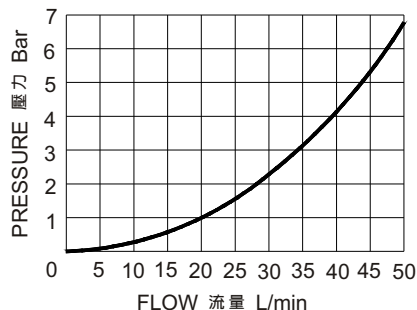
◆ MODEL 型 式

VEOR-10



◆ PERFORMANCE (Cartridge Only)

特性曲線



◆ DESCRIPTION 說 明

Flow is allowed bi-directionally between 2 and 3 until pressure at 1 rises to overcome the spring bias against the spool. When this bias pressure is surpassed, the spool shifts, blocking flow at both 2 to 3, or 3 to 2. The spring chamber is sealed and vented to atmosphere, allowing consistent shifting with only spring bias pressure independent of conditions at 2 or 3.

當油口 1 的壓力上升抵抗彈簧的預壓力時，2 和 3 止塞。彈簧腔和大氣相通，主軸的移動只和彈簧預壓力有關，而與 2 或 3 的壓力無關。

◆ SPECIFICATIONS 規 格

Model Number 型式號碼	Maximum Pressure 最大壓力 bar	Maximum Flow 最大流量 Lpm	Weight 重量 Kg
VEOR-10	350 (5076 psi)	50 (13.20 gpm)	0.2 (0.55 lbs)
Fluid Type 流體型式		ISO VG 32,46,68	
Viscosity 黏性 cSt		10~400 (59~1854SSU)	
Operating Temperature 操作溫度 °C		-30~100 (-22~212°F)	
Contamination Level 污染標準		ISO4406. 21/19/16 NAS1638,10	

◆ HOW TO ORDER 編號說明

1	2	3	4
VEOR	10	50	X

1 VALVE SERIES 系列名稱

VEOR= CARTRIDGE DIRECT ACTING EXTERNAL PILOT EXTERNAL VENT VALVES

插入式液控方向閥

2 SUBPLATE MOUNTING SIZE 稱呼口徑

Size: 10

Cavity 孔口: CS10-3N

See Page Appendixes-A_002

見附錄A_002 頁面

3 ADJUSTMENT PRESSURE 壓力調整範圍

Code 編碼	Adjustment pressure 壓力調整範圍
50	5.5 (bar)
110	11.5 (bar)

4 SPOOL TYPES 滑柱型式

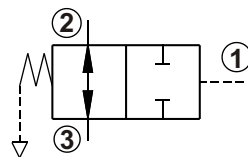
Non: Exclude O-ring.

無: 無 O-ring.

X: 11.5 bar bias spring is the minimum required for use with sealed spool.

X: 與密封閥芯配合使用時，所需最小彈簧預壓力為11.5bar。

◆ CONTROL PORT(S) 動作形式



◆ DIMENSIONS 外型尺寸圖

